



## LED Linear Lights

V-TAC LED Linear Trunking System is an energy-efficient, low maintenance alternative to traditional linear fluorescent in a variety of industrial, commercial and light assembly applications. It is the optimal solution for conventional lighting systems and also excellent for new installations due to its low installation cost.

### High lumen output

output:160 lm/W to meet different requirements

**160<sup>++</sup>**  
LM/W  
**HIGH LUMENS**

### Flexible Beam angle

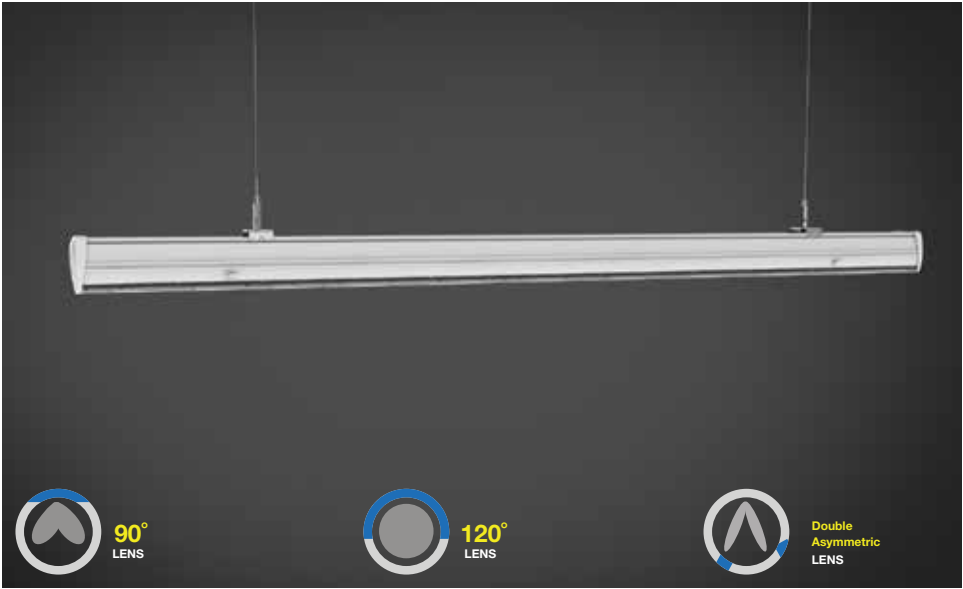
90°, 120°, double-asymmetric



### Modular system

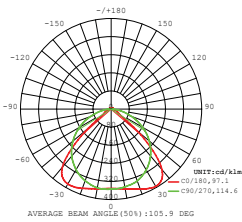
Continous row system, seamless connection, max 3500W /row





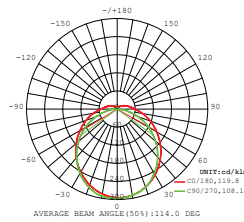
**LED Linear Master Trunking**

SKU: 1360 - 4000K Day White  
3800157625647



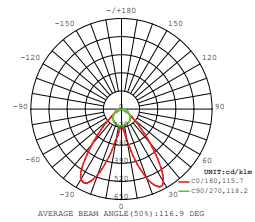
**LED Linear Master Trunking**

SKU: 1361 - 4000K Day White  
3800157625654



**LED Linear Master Trunking**

SKU: 1362 - 4000K Day White  
3800157625661



50w VT-4551D

Box Qty.  
**2 Pcs**

Sensor Compatible: **Yes**  
Voltage/Frequency: **AC:220-240V,50/60Hz**  
Luminous Flux: **8000lm**  
LED Type: **SMD**  
CRI: **>80**  
PF: **>0.9**

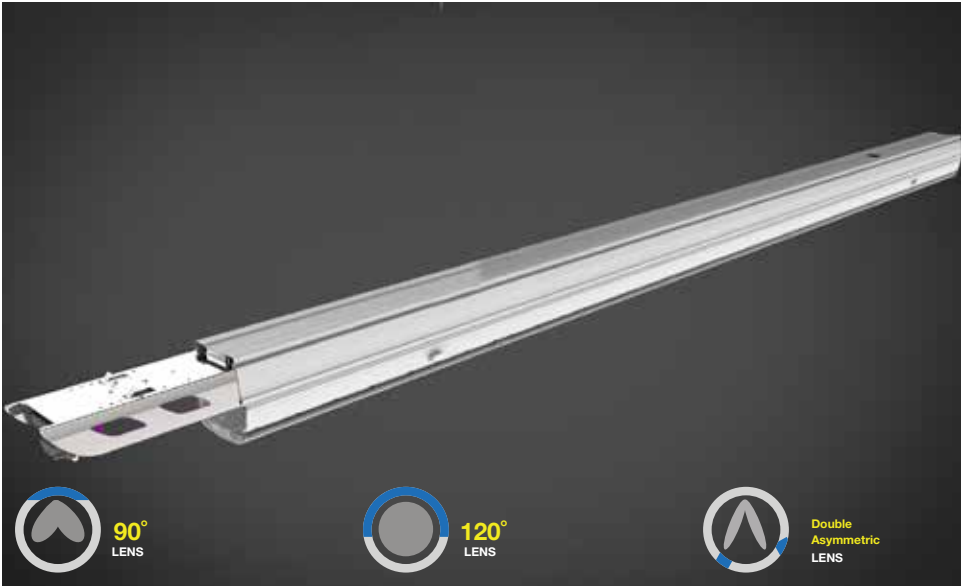
**5** V-TAC® PRO  
**YEAR WARRANTY**

\*Suitable for 10-12 hours daily, usage of the product for 24 hours a day would void warranty

Color of Fixture: **White**  
Body Type: **Steel**  
Dimension: **1500mm**  
ON/OFF Time: **>15000**  
Life Span: **50,000 Hours**

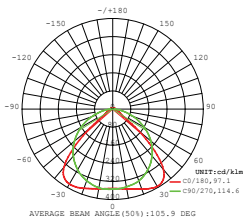


V-TAC PERFORMANCE  
**160**  
LUMENS/WATT



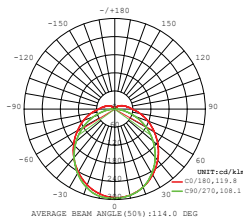
LED Linear Follow Trunking

SKU: 1363 - 4000K Day White  
3800157625678



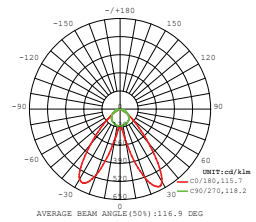
LED Linear Follow Trunking

SKU: 1364 - 4000K Day White  
3800157625685



LED Linear Follow Trunking

SKU: 1365 - 4000K Day White  
3800157625692



50w VT-4550D

Box Qty.  
2 Pcs

Sensor Compatible: **Yes**  
Voltage/Frequency: **AC:220-240V,50/60Hz**  
Luminous Flux: **8000lm**  
LED Type: **SMD**  
CRI: **>80**  
PF: **>0.9**

**5** V-TAC® PRO  
**YEAR WARRANTY**

\*Suitable for 10-12 hours daily, usage of the product for 24 hours a day would void warranty.

Color of Fixture: **White**  
Body Type: **Steel**  
Dimension: **1500mm**  
ON/OFF Time: **>15000**  
Life Span: **50,000 Hours**



V-TAC PERFORMANCE  
**160**  
LUMENS/WATT



Linear Track Module

Box Qty.  
**5Pcs**

SKU : 1382  
EAN : 3800157626415



End Cap-Linear Light Accessory

Box Qty.  
**200 Pcs**

SKU : 1366  
EAN : 3800157625708



Suspended Cord-Linear Light

Box Qty.  
**100 Pcs**

SKU : 1367  
EAN : 3800157625715



8 Wire-Feed In Male Connector

Box Qty.  
**200 Pcs**

SKU : 1368  
EAN : 3800157625722



L Node Connector-Linear

Box Qty.  
**8Pcs**

SKU : 1383  
EAN : 3800157626422



T Node Connector-Linear

Box Qty.  
**2Pcs**

SKU : 1384  
EAN : 3800157626439



X Node Connector-Linear

Box Qty.  
**2Pcs**

SKU : 1385  
EAN : 3800157626446



S Line-Follow Trunking Rail

Box Qty.  
**10 Pcs**

SKU : 1451  
EAN : 3800157633079



S Line-PC Blank Cover

Box Qty.  
**35 Pcs**

SKU : 1452  
EAN : 3800157633086