

1、Download the APP

1. Android phone can search "Pixplus" via Google.
2. I phone can search "Pixplus" via App Store
3. Android phones and i phones can download by scanning the following QR codes.



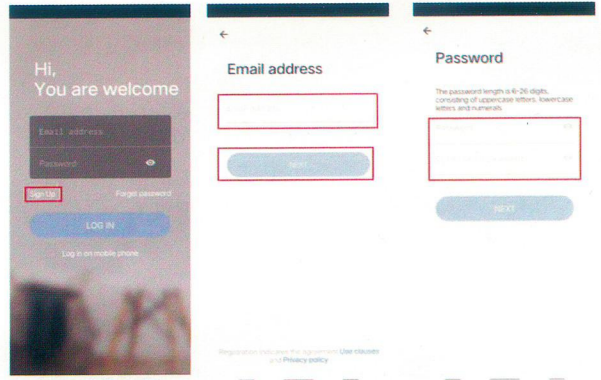
After scanning the code, you can select the domestic version or the overseas version of the APP to download according to the requirements (中国大陆/International)



P1

2、Sign up for user accounts and login

Register with your email address. Click "next" to register.

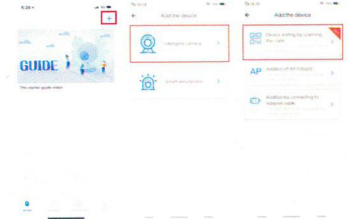


3、Device adding by scanning the code

Warm Tip: firstly connect power to the device, then the device will sounds "Camera start -> wait for connection" then you can start to operate on APP to start adding device. If you do not hear "wait for connection", press the device "RESET" button to reset and try again.

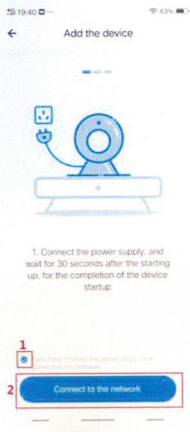
Add Wi-Fi

Click top corner "+" -->Click "Intelligent Camera" -->Click "Device adding by scanning the code"



P2

Tick "If you have finished the above steps, click Connect to the Network"--> Click "Connect to the network"



Input "wi-fi password" -->click "next"



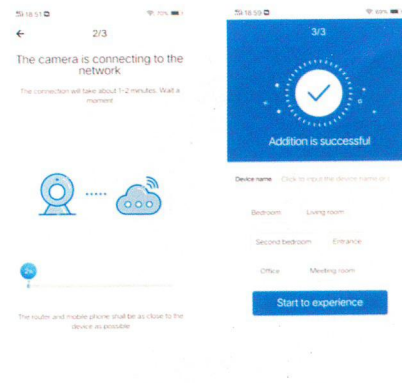
P3

P4

Use the camera to scan the phone's Qr code. The phone screen is placed directly in front of the camera 10~20cm away. The device will sounds two "beeps", then click "I heard the "beep" voice".



Waiting for device connection, it will take 1~2 minutes. The device will sound "Connection success". Phone screen will show "Addition successful". Then click "Start to experience".



P4

4、Addition of AP hotspot

Warm Tip: firstly connect power to the device, then the device will sounds "Camera start -> wait for connection" then you can start to operate on APP to start adding device. If you do not hear "wait for connection", press the device "RESET" button to reset and try again.

Add Wi-Fi

Click top right corner "+" --->Click "Intelligent Camera" --->Click "Addition of AP hotspot"

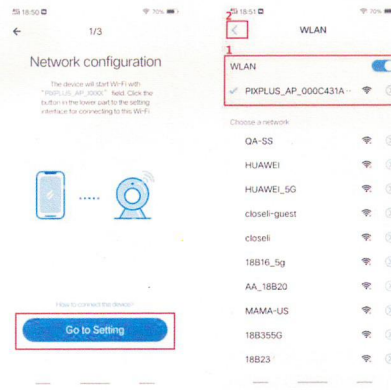


Tick "If you have finished the about steps, Click Next" ---> Click "Connect to the network"

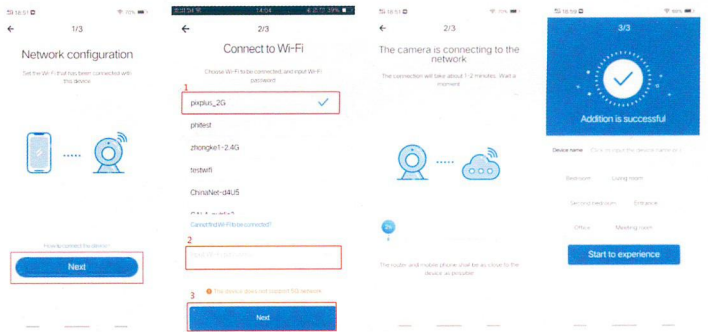


P5

Click "Go to Setting". It will list available networks. --> Find the camera wifi with name of "PIXPLUS_AP_XXXXXX", connect to Wi-Fi and return to the app interface



Click "Next". Then select network wifi and type in password. --> Click "next" to connect the network. Waiting for device connection, it will take 1~2 minutes. After connecting successfully, click "Start to experience"



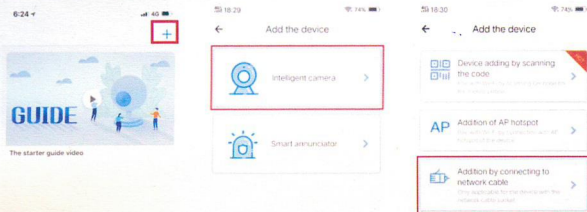
P6

5、Addition by connecting to network cable

Warm Tip: firstly connect power to the device, then the device will sounds "Camera start -> wait for connection" then you can start to operate on APP to start adding device. If you do not hear "wait for connection", press the device "RESET" button to reset and try again.

Add Wi-Fi

Click top right corner "+" --->Click "Intelligent Camera" --->Click "Addition by connecting to network cable"



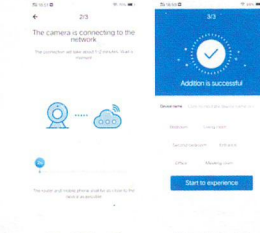
Use the mobile phone scanning the QR code on the camera for the network connection



P7

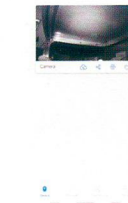
P8

Waiting for device connection. Device will sound "Wi-Fi addition success" --> "Camera is online", then click "Start to experience"



6、Live and video playback

Click the thumbnail to enter the live and video playback page.



7、Preferences

Click the Settings button in the up-right corner of the live and video playback screen to enter the device parameter setting page.

