



WEEE Number: 80133970

INSTALLATION INSTRUCTION

WIFI PTZ CAMERA



Image Sensor:	1/4" color CMOS
Night Vision:	1.0 Mega Pixels Camera, Infrared Lens 10M
Resolution:	720p
PTZ:	Pan/tilt - Horizontal 355°, Vertical 120°
Support Protocol:	Network by Cable or WiFi TCP/IP/PPPoE/ICMP/DHCP/DNS/HTTP/FTP/SMB/RTSP/UPnP/P2P/DNSt/RTSP
Motion Detection:	Alarm via E-Mail, upload alarm snapshot to FTP
Mobile view:	Support iOS and Android device
Power consumption:	DC 5V 2.0A, With Adapter
Protection Rating:	IP 20



INTRODUCTION & WARRANTY

Thank you for selecting and buying V-TAC product. V-TAC will serve you the best. Please read these instructions carefully before starting the installing and keep this manual handy for future reference. If you have any another query, please contact our dealer or local vendor from whom you have purchased the product. They are trained and ready to serve you at the best. The warranty is valid for 2 years from the date of purchase. The warranty does not apply to damage caused by incorrect installation or abnormal wear and tear. The company gives no warranty against damage to any surface due to incorrect removal and installation of the product. This product is warranted for manufacturing defects only.

INTRODUÇÃO E GARANTIA

Agradecemos que escolheu e adquiriu o produto da V-TAC. A V-TAC irá servi-lo da melhor maneira possível. Por favor, leia atentamente estas instruções antes de instalar e mantenha esse manual para referência no futuro. Se tiver outras dúvidas, entre em contato com o nosso revendedor ou comerciante local de quem adquiriu o produto. Eles são formados e estão prontos para lhe servir da melhor maneira possível. A garantia é válida por um período de 2 anos a partir da data de compra. A garantia não se aplica a danos causados devido a uma instalação incorreta ou desgaste invulgar. A empresa não dá nenhuma garantia por danos de qualquer superfície devido a inadequada remoção e instalação do produto. Este produto tem uma garantia apenas para defeitos de fabricação.

UVOD I ZÁRUKA

Děkujeme, že jste si vybrali a koupili výrobek V-Tek (V-TAC). V-Tek Vám poskytne to nejlepší. Prosim, přečtěte tyto pokyny pečlivě před zahájením instalace a uchovávejte tento manuál u budoucího odvolání. Pokud máte nějaký jiný dotaz, obraťte se na našeho prodejce nebo místního prodejce, od kterého jste produkt zakoupili. Jsou vycvičeni a připraveni vám sloužit co nejlépe. Záruka je platná po dobu 2 let ode dne zakoupení. Záruka se nevztahuje na poškození způsobené nesprávnou instalací nebo abnormálním opotřebením. Společnost dává ne záruka na poškození povrchu v důsledku nesprávného odstranění a instalace produktu. Tento výrobek je určen pouze pro výrobní vady.



UVOD A ZÁRUKA

Děkujeme za výběr a nákup produktu V-TAC. V-TAC vám poskytne to nejlepší. Prosim, přečtěte tyto pokyny pečlivě před zahájením instalace a uchovávejte tento manuál u budoucího odvolání. Pokud máte nějaký jiný dotaz, obraťte se na našeho prodejce nebo místního prodejce, od kterého jste produkt zakoupili. Jsou vycvičeni a připraveni vám sloužit co nejlépe. Záruka je platná po dobu 2 let ode dne zakoupení. Záruka se nevztahuje na poškození způsobené nesprávnou instalací nebo abnormálním opotřebením. Společnost dává ne záruka na poškození povrchu v důsledku nesprávného odstranění a instalace produktu. Tento výrobek je určen pouze pro výrobní vady.

BEVEZETÉS ÉS GARANCIA

Köszönjük, hogy választotta és megvásárolta a V-TAC terméket. A V-TAC nyújtja Önnek a legjobb minőségűt. Kérjük, a szerelés előtt figyelmesen olvassa el az útmutatót és őrizze azt a későbbiek esetében használhatára. Ha további kérdése van, kérjük, forduljon forgalmazójához vagy helyi eladójához, akinek megismerésére a termék. Ők képzettek és készek a legjobb szolgálatra. A jóllátás a vásárlás napjától számított 2 évig érvényes. A garancia nem vonatkozik a helytelen szerelés vagy az abnormalis kopás okozta károkra. A cég nem vállal semmilyen garanciát a felület károsodásáért, a termék helytelen eltávolításáért és szereléséért. Ez a termék garanciája csak a gyártási hibákra vonatkozik.

WSTĘP I GWARANCJA

Dziękujemy za wybór i zakup produktu V-TAC. V-TAC wyjątki dla Ciebie. Prosimy przeczytać te instrukcje uważnie przed przystąpieniem do zainstalowania i zachować ją do użytku w przyszłości. Jeśli masz jakieś pytania, proszę skontaktować się z naszym Przedstawicielem lub z dystrybutorem, od którego kupiłeś produkt. Oni są przeszkoleni i gotowi udzielić Ci pomocy. Gwarancja ważna jest 2 lata od zakupu. Gwarancja nie obejmuje uszkodzeń wynikających z niewłaściwego zainstalowania lub nadzwyczajnego zużycia. Spółka nie ponosi odpowiedzialności za ewentualne szkody spowodowane na powierzchni podczas instalacji lub demontażu. Gwarancja obejmuje jedynie wady powstałe z przyczyn tkwiących w produkcie.

ΕΙΣΑΓΩΓΗ - ΕΓΓΥΗΣΗ

Ευχαριστούμε να το ότι επιλέξατε και αγοράσατε το φωτιστικό προϊόν της Bi-Tek (V-TAC). Η Bi-Tek (V-TAC) θα σας εξυπηρετήσει με τον καλύτερο δυνατό τρόπο. Παρακαλούμε να διαβάσετε προσεκτικά τις οδηγίες μας προτού προχωρήσετε και διατηρήστε τις οδηγίες για τη μετέπειτα ενημέρωσή σας. Αν έχετε άλλα ερωτήματα, απευθυνθείτε στον πωλητή ή στον αντιπρόσωπο της Bi-Tek. Ο πωλητής ή ο αντιπρόσωπος της Bi-Tek είναι εκπαιδευμένοι και έτοιμοι να σας βοηθήσουν. Η εγγύηση ισχύει για περίοδο 2 ετών από την ημερομηνία της αγοράς. Η εγγύηση δεν εφαρμόζεται σε ζημιές που προκύπτουν λόγω εσφαλμένης ή ακατάλληλης εγκατάστασης. Η εταιρεία δεν παρέχει εγγύηση για ζημιές σε οποιαδήποτε επιφάνεια λόγω απομάκρυνσης ή τοποθέτησης του προϊόντος.

INTRODUZIONE E GARANCIA

Grazie per aver scelto e acquistato il prodotto della V-TAC. La V-TAC Le servirà nel miglior modo possibile. Si prega di leggere attentamente queste istruzioni prima di iniziare l'installazione e di conservare questo manuale a portata di mano per riferimenti futuri. In caso di qualunque altra domanda si prega di contattare il nostro rivenditore o il distributore locale da chi è stato acquistato il prodotto. Loro sono addestrati e pronti a servirlo nel miglior modo possibile. La garanzia è valida per 2 anni dalla data d'acquisto. La garanzia non si applica ai danni provocati dall'installazione errata o dall'usura anomala. L'azienda non fornisce alcuna garanzia per danni a qualsiasi superficie a causa della rimozione e dell'installazione errata del prodotto. La garanzia di questo prodotto è valida soltanto per difetti di fabbricazione.

INTRODUCERE, GARANTIA

Vă mulțumim că ați ales și v-ați cumpărat acest produs de iluminat cu diodă al V-TAC. V-TAC vă va fi de un mare folos, utilizându-l. În modul cel mai potrivit posibil. Vă rugăm să citiți cu atenție instrucțiunile cu atenție înainte de începerea instalării, și păstrați-le pentru că s-ar putea să fie necesar să le consultați. Dacă aveți și alte întrebări, vă rugăm să contactați vânzătorul sau comerciantul de care v-ați achiziționat produsul. Acesta sunt bine instruiți și întotdeauna sunt dispuși să vă servască în modul cel mai bun posibil.Garancia este valabilă pe un termen de 2 ani din data achiziționării produsului. Garancia însă nu se aplică ca urmare a erorilor cauzate de instalare incorectă sau care rezultă din uzura anormală a produsului. Societatea nu acordă garanție pentru daune produse pe suprafețe, indiferent de tipul acestora, care se deteriorează în timpul îndepărtării sau montării incorecte a produsului. Pentru acest produs, garanția se aplică numai pentru defecte de fabricație.

ВЪВЕДЕНИЕ И ГАРАНТИЯ

Благодарим ви, че избрали и закупили светодиодния продукт на Ви-Тек (V-TAC). Ви-Тек (V-TAC) ще ви послужи по най-добрия възможен начин. Моля прочетете тези инструкции внимателно преди инсталацията и съхранявайте ръководството за бъдещи справки. Ако имате други въпроси, моля свържете се с нашия представител преди инсталацията и съхранявайте ръководството за бъдещи справки. Ако имате други въпроси, моля свържете се с нашия представител преди инсталацията и съхранявайте ръководството за бъдещи справки. Така обучените и са готови да ви послужат по най-добрия начин. Гаранцията е валидна за период от 2 години след датата на закупуването. Гаранцията не се прилага по отношение на щети, причинени поради неправилна монтаж или абнормално износване. Дружеството не предоставя гаранция срещу щети по повърхности и да е повредена поради неправилното отстраняване и монтаж на продукта. Гаранцията за този продукт се дава само за производствени дефекти.

INTRODUCTION & GARANTIE

Le agradecemos que ha elegido y adquirido la bombilla de diodos emisores de luz de V-TAC. V-TAC le servirá del mejor modo posible. Pedimos que antes de comenzar la instalación lea atentamente las presentes instrucciones y las guarde en un lugar adecuado para consultas futuras. En caso de dudas o preguntas, póngase, por favor, en contacto con el representante o administrador más cercano de quien ha comprado el producto. Él será debidamente instruido y dispuesto para servirle en el mejor manera posible. La garantía tendrá una duración de 2 años, contados a partir de la fecha de la compra. La garantía no será aplicable a daños ocasionados por instalación incorrecta o gasto inusual.La empresa no otorgará garantía para daños de superficies de cualquier tipo generados por su eliminación e instalación incorrectas. La garantía cubre solo defectos de producción de fábrica.

INTRODUCTION & GARANTIE

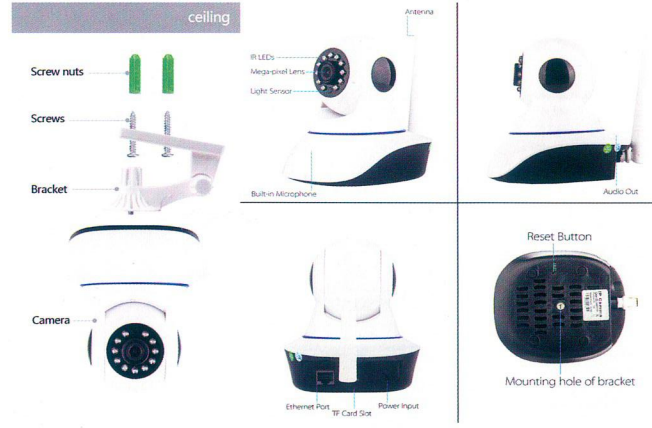
Merci d'avoir choisi et acheté un produit à V-TAC. V-TAC vous offrira le meilleur. Veuillez lire attentivement ces instructions avant de commencer l'installation et conservez ce manuel à portée de main pour référence ultérieure. Si vous avez d'autres questions, veuillez contacter notre distributeur ou le fournisseur local auprès duquel vous avez acheté le produit. Ils sont formés et prêts à vous servir au mieux. La garantie est valable pour une période de 2 ans à compter de la date de l'achat. La garantie ne s'applique pas à des dommages causés par une installation incorrecte ou une usure anormale. La société ne donne aucune garantie pour des dommages causés en raison d'un enlèvement et d'une installation incorrects du produit. Ce produit est couvert par une garantie pour des défauts de fabrication seulement.

EINFÜHRUNG UND GERÄUCHSANGWEISUNG

Wir danken Ihnen, dass Sie ein V-TAC LED-Produkt ausgesucht und gekauft haben. V-TAC wird Ihnen die besten Dienste erweisen. Lesen Sie, bitte, diese Gebrauchsanweisung vor der Montage aufmerksam durch und halten Sie sie für Auskünfte in der Zukunft bereit. Sollten Sie weitere Fragen haben, kontaktieren Sie, bitte, unseren lokalen Händler oder Verkäufer, von dem Sie das Produkt gekauft haben. Sie sind ausgebildet und bereit Sie auf die bestmögliche Art und Weise zu unterstützen. Die Gewährleistungsfrist beträgt 2 Jahre ab dem Kaufdatum. Die Gewährleistung bezieht sich nicht auf Schäden, die durch unsachgemäße Montage oder ungewöhnliche Abnutzung und Verschleiß verursacht worden sind. Das Unternehmen gewährt keine Garantie für durch unsachgemäßen Produktabbau oder unsachgemäße Montage entstandene Schäden an jeglichen Oberflächen. Diese Gewährleistung gilt nur für Herstellungsängingel.



INSTALLATION



1. APP DOWNLOAD:

- 1) Please go to Apple store or Google market to Search and Download it
- 2) Scan the QR Code Below:



Android

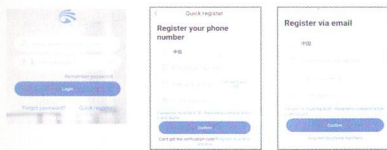


iOS



2.ACCOUNT REGISTER

1)Open "Yoosee" App and Click "Quick Register"



2)Select "phone number or Email Register" (For Example: Mobile Number Register, Input phone Number and Click "NEXT", and then Wait for SMS Verification Code, Please Click "OK" to finish Register After Inputting Verification Code, Finally Login your account.

3.ADD DEVICES

1) Note:

1. Please use Digital or Letter for WiFi Name, Dont use Chinese or Special Symbols;
2. The Router WiFi Frequency Must be 2.4G (Doesn't support 5G Signal now), Please Login your router to view and switch Wireless Frequency;

3.Don't Hide the WiFi Name and SSID(fail to connect if hiding them)

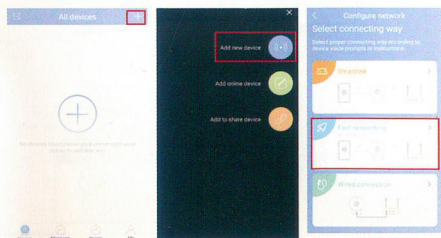
4.Can't support fiber optic modem integrated router

Fast Networking (Android Phones)

Note: The Android phone needs to turn on the GPS position. The reason is that there is a function to find nearby device in the APP.Need the locate permissions, if turn off, some cameras models can not find device hotspots; some other models also need to use it during distributing network

1. The mobile phone is connected to the wireless router, and the camera and phone are in the same WiFi environment

2. Open the "YOOSSEE" app, click "+", select "Add New Device", and select "Fast Networking";



3. Power on the camera, then can hear the prompt :pls consider Wi-Fi with AP connection ,waiting for configuration ", if no connected ,pls reset the camera via reset button on the back of the camera, and the camera said "reset to default setting ", then loose the reset button.(remarks: some cameras don't have the audio,pls check your purchased camera with audio or not)

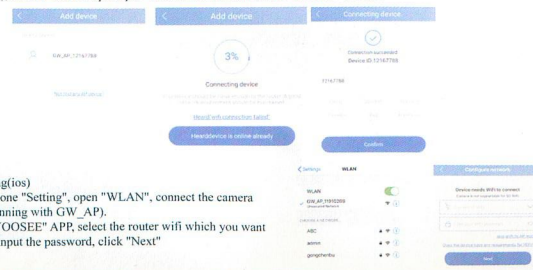
4. After you heard the prompt of connection, click the "hear a beep for connection" on the APP.(Remarks: some model of the cameras no audio,pls check your purchased camera with audio or not.)



5.Click and select the wifi name of the current wireless router, and input the corresponding WiFi password, then click "Next";

6. The APP will display the device's hotspots in the nearby configuration state (using the device ID as the distinction), click the device which need to be configured, start configuration.

7. During the configuration process, the APP will configure automatically, about one minute or so (related to the network environment),the APP interface prompts "Connection succeed", click "confirm" to add it

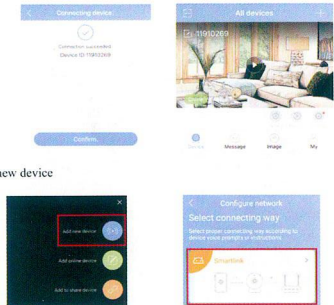


Fast networking(ios)

1. Open the phone "Setting", open "WLAN", connect the camera WiFi, (beginning with GW_AP).
2. Open the "YOOSSEE" APP, select the router wifi which you want to connect, input the password, click "Next"



3. After the configuration succeed, it will skip to the connection succeed interface automatically, name the device clicks "confirm", and then connection succeed



SMART LINK:

1. Click "+", select "add new device"
2. Select Smart link

3. The App will Pop-up WiFi interface which the camera needs to connect, and then Input WiFi password
4. Click "NEXT", Please patiently wait for connection, the Connection Speed is related to your network environment.
5. when you heard " start configuration, device is online already", after some seconds, will pup out verify password interface. (Remarks: some model of the cameras no audio,pls check your purchased camera with audio or not.)

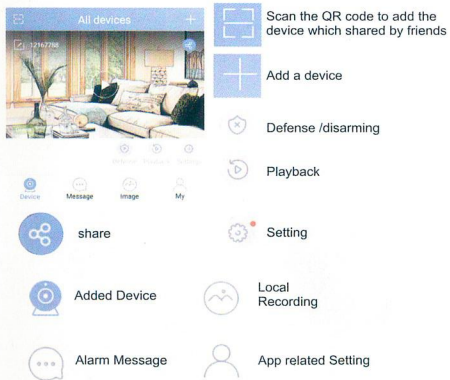


Wired Connection

- ①Select "Wired Connection" and Click" NEXT"
- ②Click" NEXT"
- ③Automatically search the device which connected the internet, Click "+" in the device list to add a device
- ④Input Device Name and Password(Device Name: Fill in at random, Password: 123), Click"Save"



DEVICE PREVIEW:



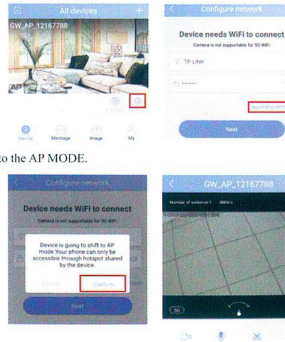
Click the "Preview" icon in Device list to Preview the live video (as the picture,Take the panoramic camera as an example)

PREVIEW ITEM INTERFACE ICON:



AP MODE (ANDROID):

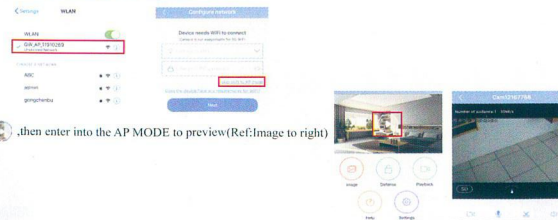
1. Open APP,find the camera's GW_AP***** on the device list ,click "setting",then click "skip,shift to AP mode" (Remarks:if there is no Corresponding hotspot devices,pls check the GPS of the phone have turned on or not,the APP location permission is selected allow or not. Android phone needs to turn on GPS location, the reason: APP has the function to find a nearby device;if turn off,some models of the camera can't find the device hotspots; some other models also need to use it during distributing network)



2. Click "confirm",enter into the AP MODE.

AP Mode(IOS):

1) Open setting on the phone,open WLAN, find the camera's wifi(begin with GW_AP*****),connect it .
2) Open "YOOSEE" APP,then click "skip,shift to AP mode"



3)Click "Preview" ,then enter into the AP MODE to preview (Ref:Image to right)



PC CMS OPERATION GUIDE

1. Download the CMS for PC
Input the http://yoosee.co on IE browser, and click CMS to download and install in the computer.



ANDROID



IOS

CMS Also Available
PC Client For Windows

Log in the CMS on PC

1. Open the CMS, three mode to login:

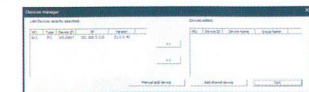
admin login, click "ok" and log in the CMS
cell phone login, input mobile phone register on the CMS and password, click "ok" to login, this way will synchronize the devices added by the mobile phone app without adding them again. Click the device which you want to view on the device list.

Login with the user ID or email register. In this mode, the device that has been added to the mobile app is synchronized also, no need to add it again. Click the device which you want to view on the device list.

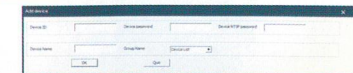


Add camera on CMS 1.add device

1)On the left interface of the CMS software, click "+", and it will auto search the device which in lan ,and select the right device on the new device list and click "add" to add the new camera, then click EXIT



2. Manual to add the device (RTSP password only support CMS LAN), input the device ID, device password, device RTSP password, device name Add device

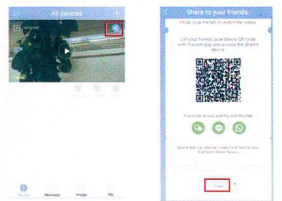




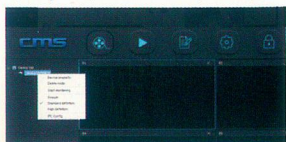
Remark: RTSP password changed on RTSP setting; yoosee APP device setting—security setting—RTSP setting




3. Add shared device, click the share logo on all device of yoosee APP, copy the link, and share the link by WhatsApp, skype, Facebook, twitter to PC, then on PC, copy the link and paste it to the link column on add shared device, then click ok



4. Local device settings
Turn off the video preview, click the device which need to be set on the device list, right click the mouse then can edit the device properties, delete the device ,video preview, Device definition adjustment (default HD in lan), configuration IPC

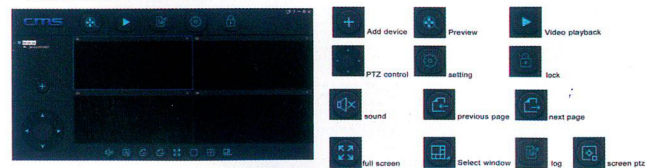


5. CMS PREVIEW


Open the CMS, right click the device list , select all connect (then can view all video of the device list) as picture 1, if you want to open one of the videos, then drag the device to the preview window

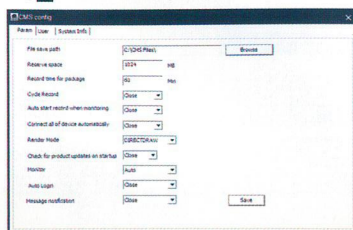


6. CMS MENU INTRODUCTION:



CMS RECORDING SETTING

1) Click the icon of the setting . Set the local recording storage path and local recording function settings, as shown:



2) Manual recording setting

Mouse move to the device list ,right click the "all start record " then can make all device record in local,unit device recording ,move the mouse to device preview then right click and select "start record" as shown



3) Video playback

Click playback , enter the playback menu, select recording file type ,click the drop-down list. to select the one which you want to play

