

INSTALLATION INSTRUCTION T8 LED Tubes

TECHNICAL DATA:

Model	VT-1221
Watts	18W
Lumens	1850LM
CRI	>80
DF	>0.7
BeamAngle	160°
Body Type	Glass
Holder	G13
Long Life	25,000 Hours
On/Off Cycles	>15000
Dimension	28x1200mm
Input Power	AC:220-240V,50Hz



INTRODUCTION & WARRANTY

Thank you for selecting and buying V-TAC product. V-TAC will serve you the best. Please read these instructions carefully before starting the installation and keep this manual handy for future reference. If you have any another query, please contact our dealer or local vendor from whom you have purchased the product. They are trained and ready to serve you at the best. The warranty is valid for 3 years from the date of purchase. The warranty does not apply to damage caused by incorrect installation or abnormal wear and tear. The company gives no warranty against damage to any surface due to incorrect removal and installation of the product. The products are suitable for 10-12 Hours Daily operation. Usage of product for 24 Hours a day would void the warranty. This product is warranted for manufacturing defects only.

	This marking indicates that this product should not be disposed of with other household wastes.		Caution, risk of electric shock.
	LED Lamps suitable for 50Hz operation		LED Tubes are NOT suitable for dimming
	LED Lamps to be used in dry conditions or in a luminaire that provides protection		LED Tubes not suitable for emergency operations
	LED replacement starter (Included in the packaging)		

WARNINGS!

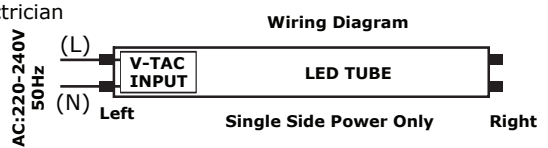
- Installation should only be done by a certified electrician
- Operation environment temperature: from -20°C to +45°C
- Do not use DC electricity
- Do not modify the fitting to be used with the LED Tube.
- V-TAC LED Tubes are NOT designed to be used in emergency operations.
- For Indoor use only.
- **Do NOT use with electronic ballasts. V-TAC LED tubes are not compatible with electronic ballast circuit. In order to use the electronic ballast fitting you must ensure to remove the electronic ballast from the fitting and rewire the circuit as per new fitting installation as shown below. Ensure the installation and wiring is carried out by certified electrician.**

PACKING:

- LED Tube (1PC)
- Instruction Manual (1PC)
- Dummy Starter (1PC)

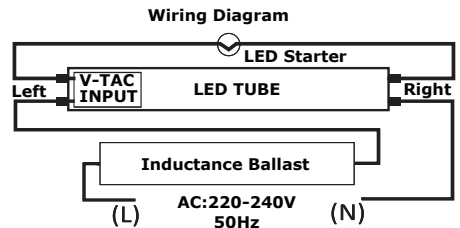
New Fitting Installation

- Installation should only be done by a certified electrician
- Switch Off the power.
- Ensure the wiring diagram is followed as highlighted.
- Insert V-TAC LED Tube.
- Switch On the power to test the light.

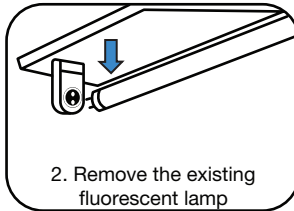


Installation & Replacement of Fluorescent Lamp(Single Magnetic Ballast Circuit)

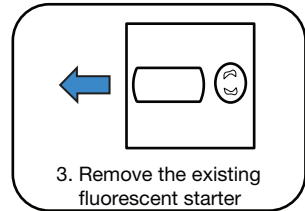
- Installation should only be done by a certified electrician.
- Please refer to the wiring diagram for replacing fluorescent tube on a single magnetic ballast circuit with V-TAC LED Tube.



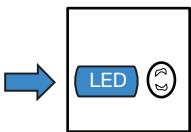
1. Switch off the power



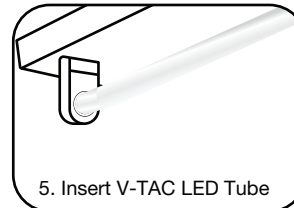
2. Remove the existing fluorescent lamp



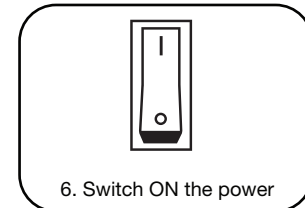
3. Remove the existing fluorescent starter



4. Insert LED T8 starter



5. Insert V-TAC LED Tube



6. Switch ON the power

**IN CASE OF ANY QUERY/ISSUE WITH THE PRODUCT, PLEASE REACH OUT TO US AT: SUPPORT@V-TAC.EU
FOR MORE PRODUCTS RANGE, INQUIRY PLEASE CONTACT OUR DISTRIBUTOR OR NEAREST DEALERS.
V-TAC POLAND SP.ZO.O BIURO, UL. OBORNICKA 52, 62-002 ZŁOTNIKI**