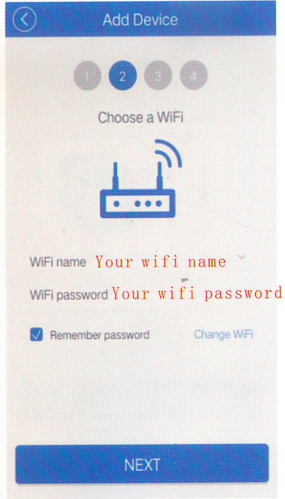


Input your WiFi SSID and password.



Add Device

1 2 3 4

Name this device



Such as your light

Named your device to complete.

COMPLETE

When the green light keeps on, the device is online. Start to control now!

V-TAC®

V-TAC SMART HOME

WiFi POWER STRIP USER GUIDE

Parameter:
Model: VT-5006 SKU:8420
Rated Voltage: 90V-250V AC
Max. Current: 10A
Wireless Standard: Wi-Fi 2.4Ghz
Material: PC



Alexa/Google Home Tutorial



FAQ



Multi language Manual



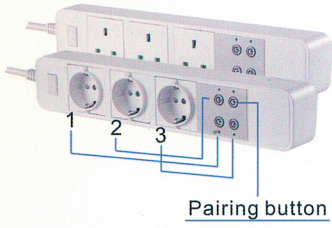
Google Paly



IOS

1. Install V-TAC Smart Home App into smart phone or tablet device. Or scan the QR code, download and install into smart phone or tablet device.

2. Power up
ON/OFF operating principle
The connected appliances work/
stop through live wire power on/off

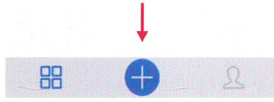


3. Set up
Press and hold button for about 5 seconds
until the WIFI LED repaid flashes.

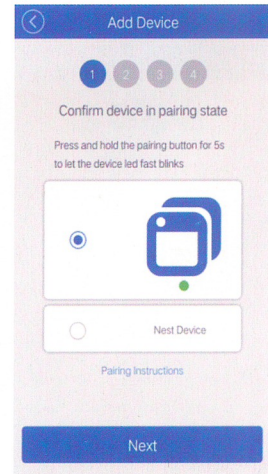
All Devices ▾

No devices currently, tap on below button to add

Tap "+" on Smart Home APP



Select the first part



IOS user can try the second option(AP), manual configuration.