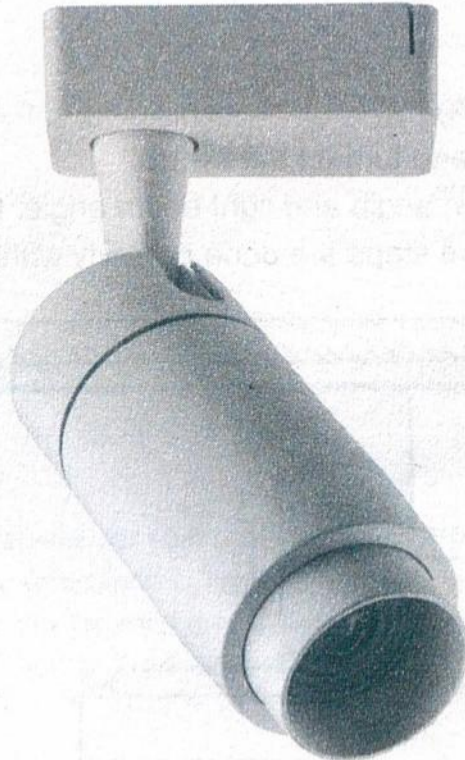


V-TAC[®]
INNOVATIVE LED LIGHTING



INSTALLATION INSTRUCTION

Model:VT-7735 LED Track Light



INTRODUCTION:

Thank you for selecting and buying V-TAC LED Track light. V-TAC will serve you the best. Please read these instructions carefully before starting the installation and keep this manual handy for future reference. If you have any other query, please contact our dealer or local vendor from whom you have purchased the product. They are trained and ready to serve you at the best.

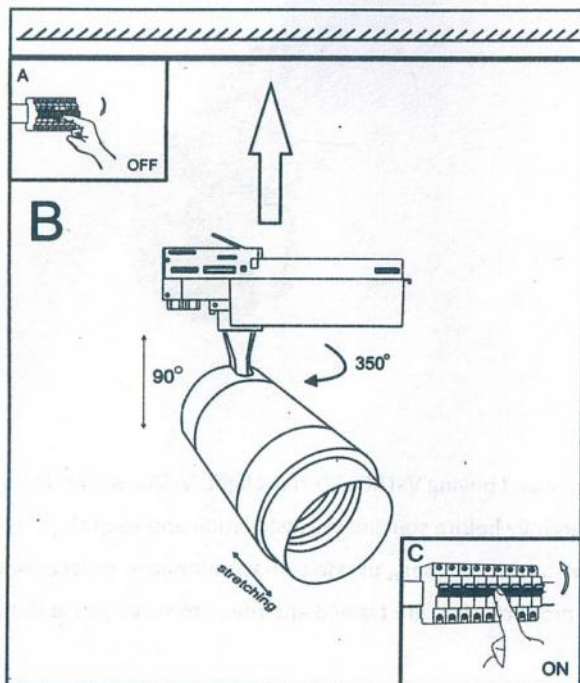
TECHNICAL PARAMETERS

Model No:	VT-7735
Power:	35W
Input Voltage:	AC 220-240V, 50 Hz
LED Type:	COB
LED Chip Voltage & Current	36V, 1000MA
Lumens:	2350lm
Beam Angle:	18-50D
CRI:	>80
Protection Rating:	IP20
Operating Temperature:	-10°C to +50°C
Unit Size:	215*183*93mm

INSTALLATION INSTRUCTIONS

Installation Instructions:

- 1, Switch off the power. (Pic A)
- 2, Install the fixture into track and turn off the switch.
- 3, Adjust the fixture illumination angle and light beam angle. (Pic B)
- 4, Switch on the power if above steps are done properly without any mistakes. (Pic C)



APP Control Instruction

Preparation:

Download VTACSMART APP on the mobile phone; (Scan the QR Code)



for ios



for android

Operating Steps:

Access to equipment and types:

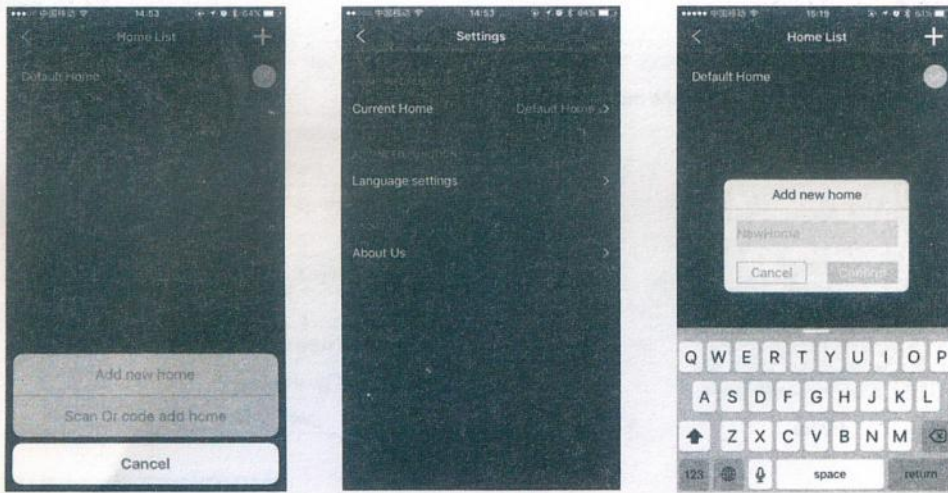
1. Open bluetooth and VTACSMART APP, then it will automatically search and connect VTACSMART hardware equipment.
2. The administrator should open the setting function and access to home information to create a new home, press add device. The application will automatically search all the lighting devices. If the bluetooth connection is not stable, switch on the application again.
3. Connected to the network device will get device type, if there is an unknown device type or no name of equipment, switch again the device, then software will take the initiative to the type of access equipment.

Family function:

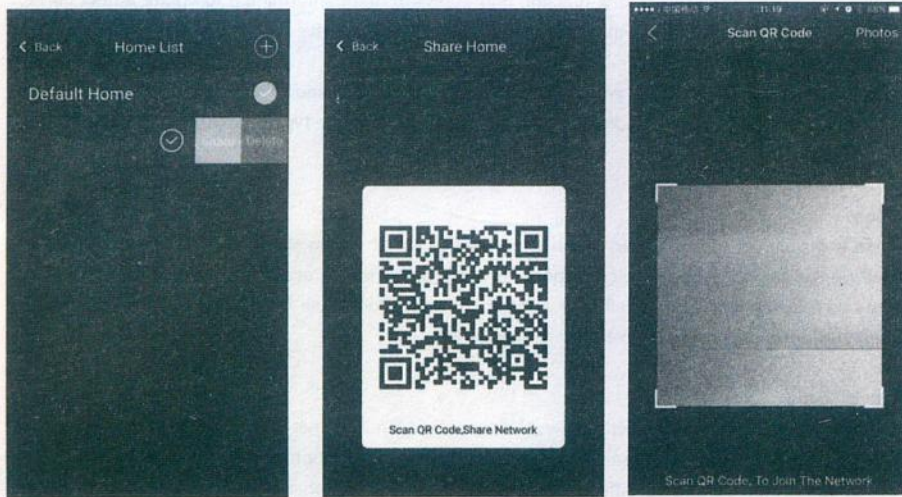
Family function is mainly used for the user who has multiple rooms to management and control all the device flexibly and efficiently, as well as switch to corresponding home based on the actual situation. At the meantime, establish user's own family, it will be benefits for encrypt controlled individual family device. This makes other person without authorization, unable to access the family device.

Create home:

In the control interface, current home directly shows the connected family name. After leaving factory, the device turns itself into a Default Home. In the setting page, switch to the current home menu and enter in the home list. Here the administrator can create different homes as they want and share these homes to their family members.

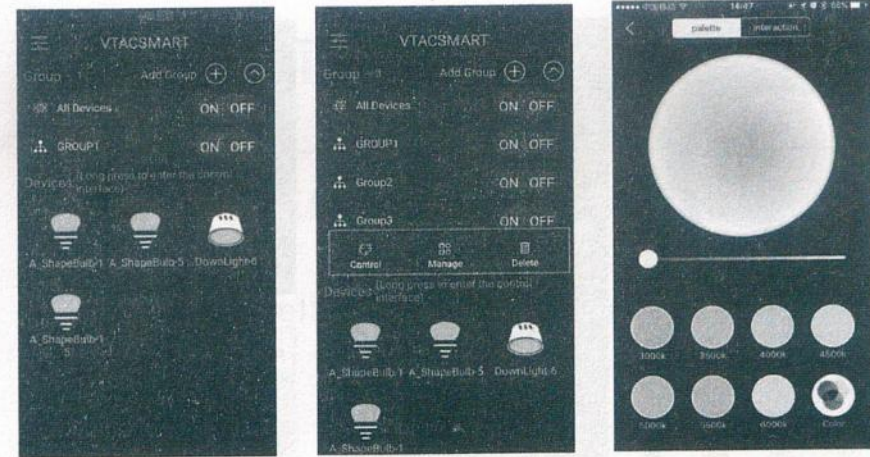


1. Click on the upper right corner of the setting interface + icon. The administrator can add new home and search all the lighting devices to this home.



2. If the devices have been added in the administrator's new home, they would not be shown on the other family members' device. The administrator can use his device and share the QR code with them. The other family members can click on the upper right corner of the setting interface + icon to scan administrator's QR code and get the devices from administrator's new home.

Operating equipment:



APP Control Interface is mainly divided into two parts -- Rooms & Devices. Each Group will be independently controlled as well as single device operation, can only control the single unit.

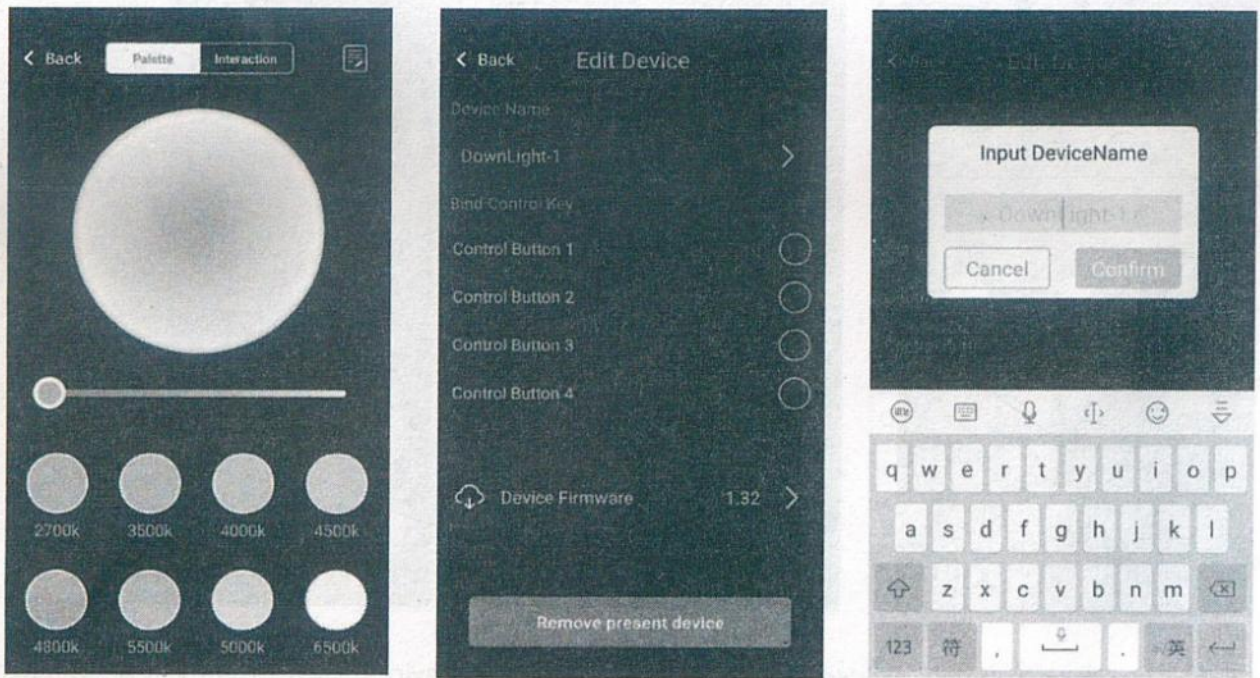
1. The Group operation divided into 3 main parts: On/Off, Control and Manage.
2. The single device operation consists of On/Off, Control, locator device, rename, join room, etc.
3. All controlled groups can be hidden up or spread by click on the group title.

Groups operation:



1. Press On / Off key to control the Group Management page.
2. Click one group, you can see the Manage function to enter the Group Management Interface, then rename, Select the Group Icon such as Restaurant, Bedroom, Livingroom, etc. You can also select the current devices to this group.
3. Click Control key, to adjust CCT and brightness of each group.

Single device operation:



1. Press On/Off key, when the device loaded for the first time, if connected failed, press device icon to get device again.
2. If not ensure the device type, double click device icon, locate the device.
3. Long press enter the control interface of the device, then adjust CCT and brightness.
(Remark: Limited to CCT adjustment function, RGB function is not workable)
4. In the Control interface, click on the upper right icon of the device to setting button, the user can modify the device name.

EN

NOTE:

To reset the track light manually, kindly follow below steps.

- (1) Switch ON the Light for 40 Seconds and then Switch it OFF and wait for 5 seconds.
- (2) Switch ON the light for 1 seconds and then Switch OFF the light (Wait for 2 Seconds)
- (3) Repeat Step 2
- (4) Switch ON the light for 6-10 Seconds and then Switch it OFF and wait for 2 seconds.
- (5) Switch ON the light and it should blink three times.

BG

ЗАБЕЛЕЖКА:

За да нулирате ръчно индикатора за песен, моля, следвайте стъпките по-долу.

- (1) Включете светлината за 40 секунди, след което я изключете и изчакайте 5 секунди.
- (2) Включете светлината за 1 секунда и след това изключете светлината (изчакайте 2 секунди)
- (3) Повторете стъпка 2
- (4) Включете светлината за 6-10 секунди и след това я изключете и изчакайте 2 секунди.
- (5) Включете светлината и тя трябва да мига три пъти.

IT

NOTA:

Per ripristinare manualmente la luce della pista, segui gentilmente i passaggi seguenti.

- (1) Accendere la luce per 40 secondi e quindi spegnerla e attendere 5 secondi.
- (2) Accendi la luce per 1 secondo e poi spegni la luce (attendere 2 secondi)
- (3) Ripeti il passaggio 2
- (4) Accendere la luce per 6-10 secondi, quindi spegnerla e attendere 2 secondi.
- (5) Accendi la luce e dovrebbe lampeggiare tre volte.

DE

HINWEIS:

Um das Spurlicht manuell zurückzusetzen, folgen Sie bitte den nachstehenden Schritten.

- (1) Schalten Sie das Licht für 40 Sekunden EIN und dann AUS und warten Sie 5 Sekunden.
- (2) Schalten Sie das Licht für 1 Sekunden ein und schalten Sie dann das Licht aus (Warten Sie 2 Sekunden).
- (3) Wiederholen Sie Schritt 2
- (4) Schalten Sie das Licht für 6-10 Sekunden ein, schalten Sie es aus und warten Sie 2 Sekunden.
- (5) Schalten Sie das Licht ein und es sollte dreimal blinken.

ES

NOTA:

Para restablecer la luz de la pista manualmente, siga los pasos a continuación.

- (1) Encienda la luz durante 40 segundos y luego apáguela y espere 5 segundos.
- (2) Encienda la luz durante 1 segundo y luego apague la luz (espere 2 segundos)
- (3) Repita el paso 2
- (4) Encienda la luz durante 6-10 segundos y luego apáguela y espere 2 segundos.
- (5) Encienda la luz y debe parpadear tres veces.