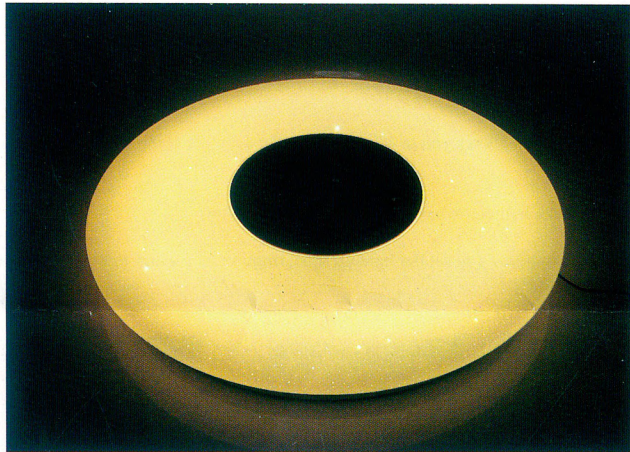


INSTALLATION INSTRUCTION
LED CEILING LIGHT - SMART SPEAKER



INTRODUCTION & WARRANTY

2 YEAR
WARRANTY

Thank you for selecting and buying V-TAC Product. V-TAC will serve you the best. Please read these instructions carefully before starting the installation and keep this manual handy for future reference. If you have any other query, please contact our dealer or local vendor from whom you have purchased the product. They are trained and ready to serve you at the best.

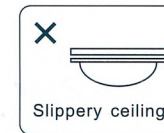
The warranty is valid for 2 years from the date of purchase. The warranty does not apply to damage caused by incorrect installation or abnormal wear and tear. The company gives no warranty against damage to any surface due to incorrect removal and installation of the product. The products are suitable for 10-12 Hours Daily operation. Usage of product for 24 Hours a day would void the warranty. This product is warranted for manufacturing defects only.

SPECIFICATIONS

Model Number	SKU	Watts	Lumens	Color	Beam Angle	IP Rating	Dimension
VT-5500	1490	35	2100	RGB+WW+DW+WH	120	IP20	D:500X65MM

WARNING

1. Before starting the installation cut OFF electric power to avoid electric shock.
2. Please don't install the lamp on unstable surface.(Example Image as shown below)
3. Please do not cover the light with any insulation blanket or similar objects under no circumstances.
4. Do not install the light above high heat places or wet places.
5. Light must be installed only by qualified electrician.
6. Do not use in series with dimmer.

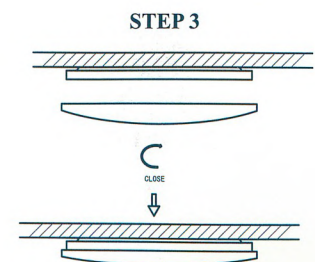
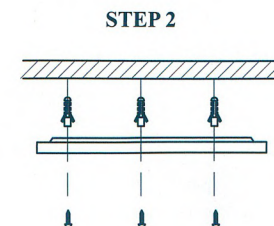
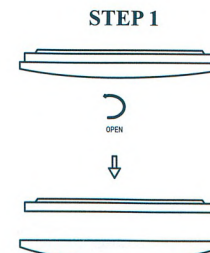


INSTALLATION

Step 1. Open the box and take out the screws. Twist and open the lampshade, set up the pitch-row first according to the chassis position fixed hole on the ceiling, and then make hole in the ceiling using electric drill and put the nails on the hole.

Step 2: Fix the base of the light to the ceiling using screws. Wire connections must be done to the terminal block.

Step 3. When installing the lampshade, twist and lock the lampshade clockwise until it is locked.

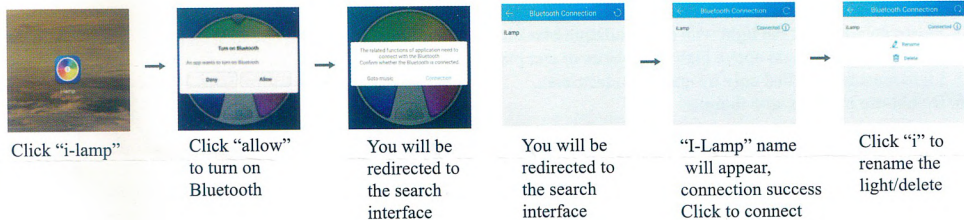


APP INSTALLATION

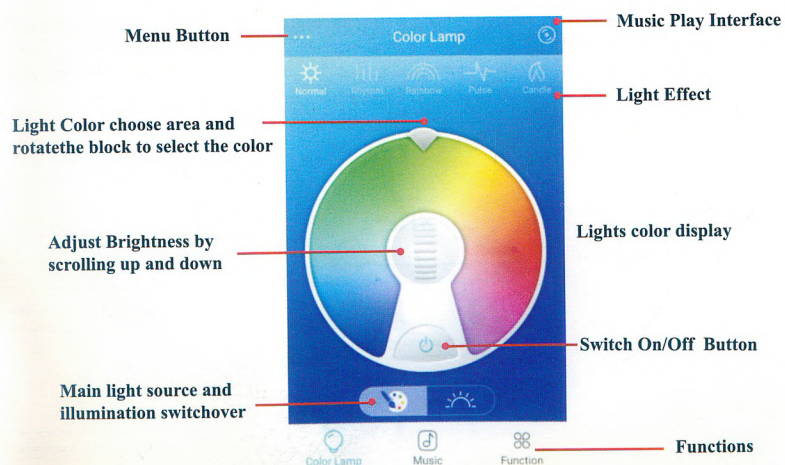
1. Download the APP on Apple store(IOS) or Google Play Store(Support above Android4.0 system) by searching i-LAMP
2. OR you can download the APP by Scanning the QR code
OS X system:need 2 times matching,connect phone's bluetooth first, then connect the app's buletooth.



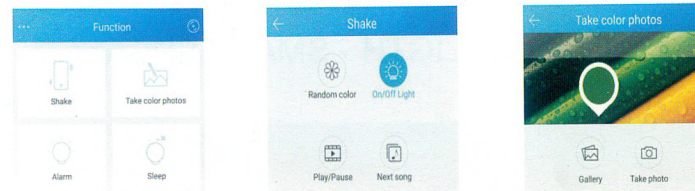
3. Turn on the Light, open the App "i-Lamp", Follow the below steps to add the light



APP INTERFACE & FUNCTION



FUNCTIONS



- A. Click "Shake" - This function allows you to adjust/change the colors & control music functions such as play/pause/next song.
- B. Click on take Color Photos in order to extract light color from a photo.
- C. Alarm and Sleep functions allow you set the light up time, ringtone as a alarm to turn the light on & to turn off the light as per the setup time.



In case of any query/issue with the product, please reach out to us at: support@v-tac.eu
For More products range, inquiry please contact our distributor or nearest dealers. V-TAC EUROPE LTD Bulgaria, Plovdiv 4000, bul.L.Karavelow 9B