

INSTALLATION INSTRUCTION

VT-4550D LED LINEAR LIGHTING SYSTEM



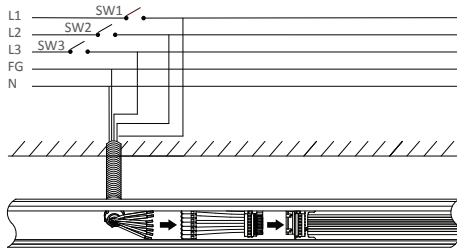
INTRODUCTION

Thank you for selecting and buying V-TAC LED Emergency Spotlight. V-TAC will serve you the best. Please read these instructions carefully before starting the installation and keep this manual handy for future reference. If you have any other query, please contact our dealer or local vendor from whom you have purchased the product. They are trained and ready to serve you at the best.

SAFETY NOTES

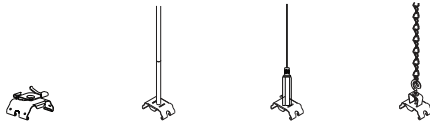
- Install should be performed only by qualified technician.
 - Make sure no voltage while doing the installation.
 - Connect cable wires according to wire labeling.
 - Max current should not exceed 16A in one power feed circuit.
-

Wire diagram of triple circuits function



This Triple Circuits function offers to control lighting ON/OFF by three switches SW1,SW2,SW3 which are connected by live lines L1,L2,L3

Four options for installation



Surfacing mounting kit

Rod hanger

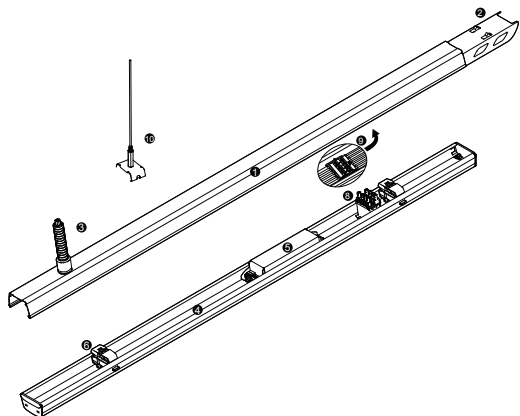
Cord hanger

Chain hanger

Follow:

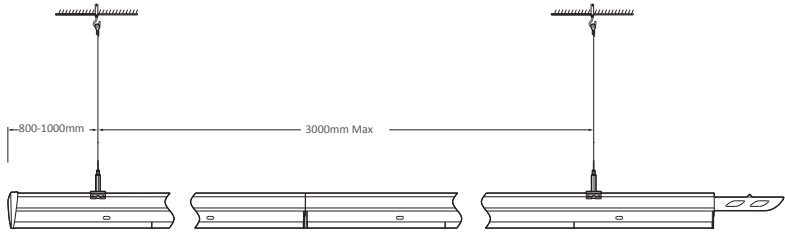
Follow module is used for the beginning of one linear light row, it can be infinitely connected itself in one row with one Master module at the end of row

- 1 Trunking Rail
- 3 Connecting plate
- 4 Power cable feed in hole
- 5 Luminaire
- 6 Driver
- 7 Lock holder
- 8 Male connector
- 9 Female connector
- 10 Installation cord

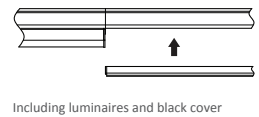
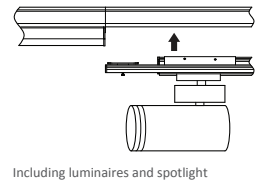
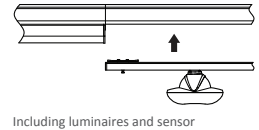
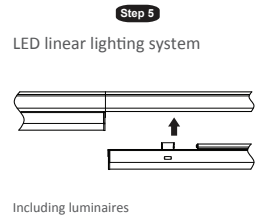
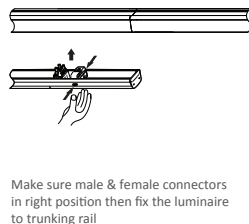
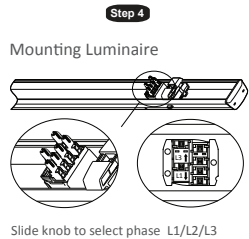
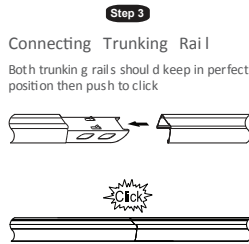
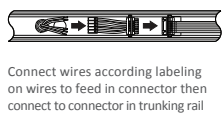
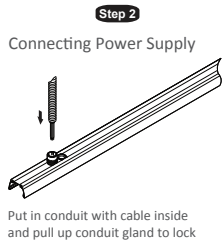
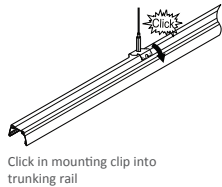
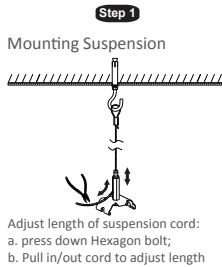


Pendant and mounting installation

Starting Installation distances point should be 800 mm to 1000 mm, then in between 1st & 2nd point should be 3000 mm max



INSTALLATION INSTRUCTION





NOTICE

- Risk of shock, hence disconnect at fuse or circuit breaker before installation or servicing.
- Suitable for a Maximum use of 10-20 Hours Daily. Usage of product for 24Hours a day would void the warranty.

WARRANTY

- This product is warranted from manufacturing defect only.
- The warranty does not apply to damage caused by incorrect installation or abnormal wear and tear.
- The company gives no warranty against damage to any surface due to incorrect removal and installation of the product.

WARNING

- The product uses a very high power LED. As with any light source, direct viewing should be avoided.
- NOTE: Although easy to fit, this lamp requires wiring to the main and for safety should only be fitted by a qualified electrician.
- Having issued this warning, the company accepts no responsibility for issues arising for any failures to comply with these clear instructions.
- The company will not accept any responsibility for any other issues arising from improper use of fitting of this product as these materials are beyond our control.