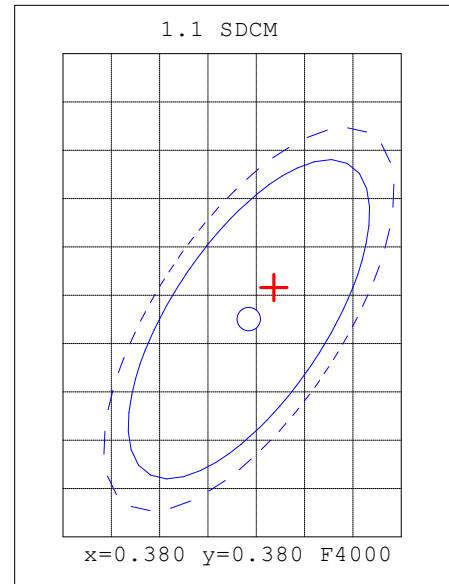
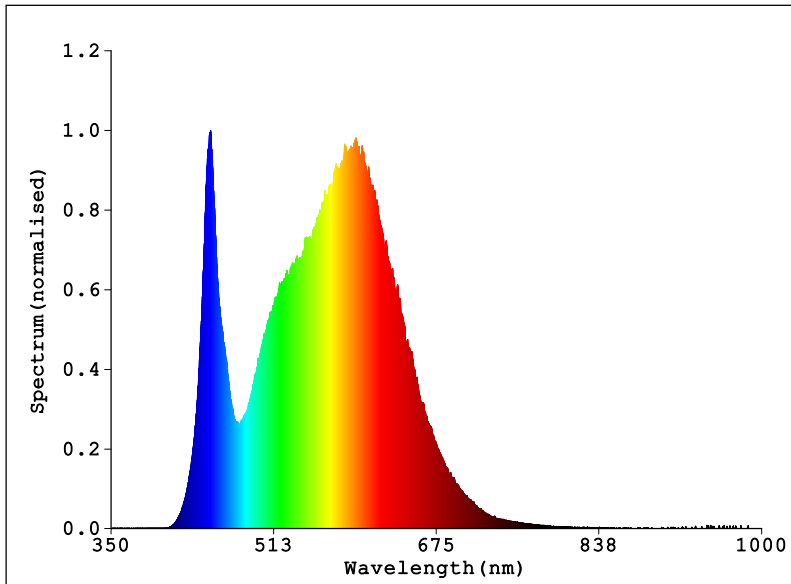


Spectrum Test Report

NAME: PANEL	TYPE:SKU- 2160246	WEIGHT:
DIM.:	SPEC.:CCT- 4000K	SERIAL No.:
MFR.: V-TAC EUROPE LTD		



Color Parameters:

Chromaticity Coordinates: $x=0.3822$ $y=0.3826$ $u'=0.2240$ $v'=0.5044$ $duv=0.00220$

$T_c=3995K$ Dominant WL: $L_d=578.0nm$ Purity=29.5%

Ratio: R=17.7% G=78.8% B=3.5% Peak WL: $L_p=449.4nm$ HWL: 21.3nm

Rendering Index: $R_a=80.3$ TLCI = 66

R1 =78 R2 =87 R3 =95 R4 =79 R5 =78 R6 =83 R7 =84

R8 =58 R9 =-9 R10=71 R11=78 R12=61 R13=80 R14=98 R15=70

E = 21.43 lx Ee = 0.0632 W/m²

Status: $T=288.00ms$ $I_p=52583$ (80%) [HAAS-2000A(CAN)]

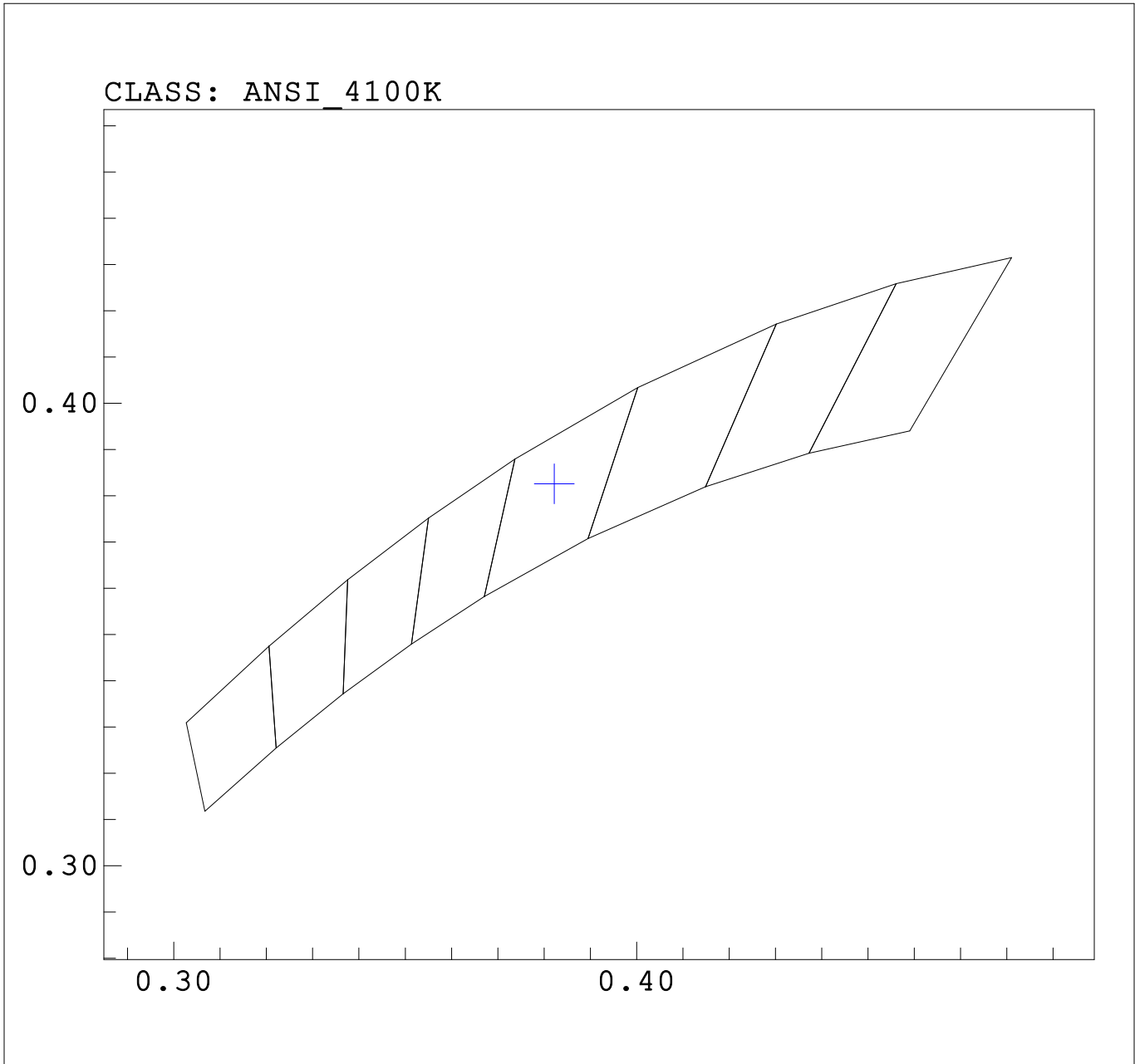
Tester:eng. LASKOV
 Temperature:25.3Deg
 Manufactory:V-TAC EUROPE LTD

Date:
 Humidity:65.0%
 Remarks:Kpuls = 0.28 %PST- 0.022 SVM- 0.009

System:HAAS-2000A (CAN)

Standard: ANSIC78-377_White_2011.WCL

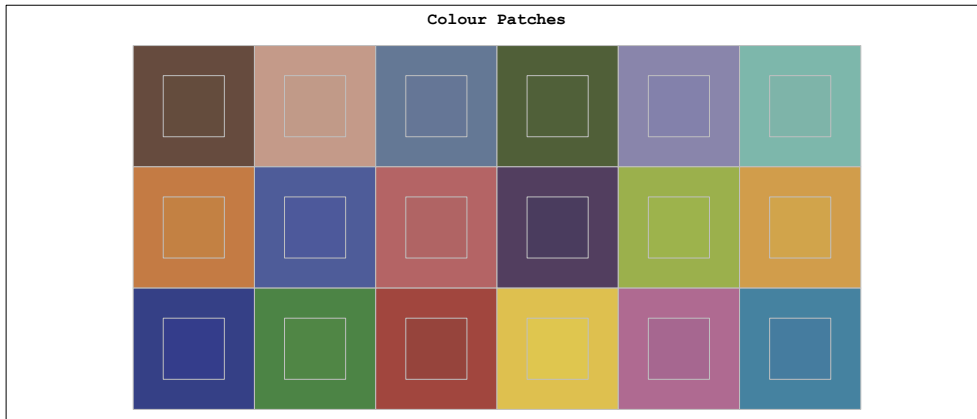
CIE x,y: x = 0.3822 , y = 0.3826



Tester:eng. LASKOV
Temperature:25.3Deg
Manufactory:V-TAC EUROPE LTD

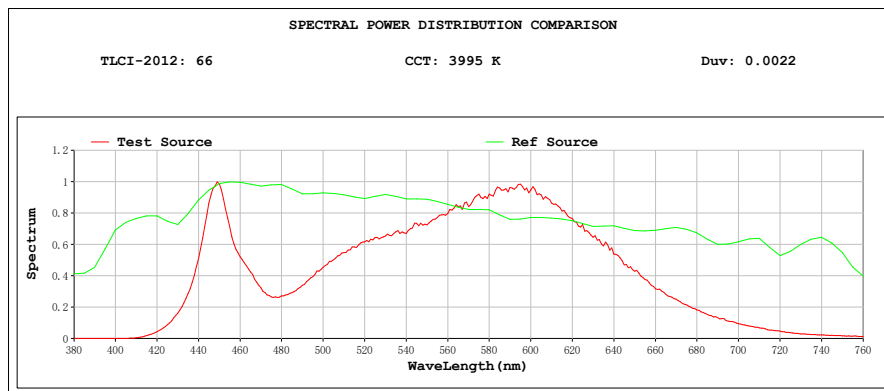
Date:
Humidity:65.0%
Remarks:Kpuls = 0.28 %PST- 0.022 SVM- 0.009

System:HAAS-2000A (CAN)



Colourist's Advice Report

Sector	Lightness	Chroma	Hue
R	---	--	0
R/Y	+	-	+++
Y	++	+	+++
Y/G	+	+	+
G	+	0	-
G/C	0	-	0
C	-	--	0
C/B	----	+	+++++
B	--	++	++
B/M	--	0	----
M	---	0	----
M/R	----	0	---



Tester:eng. LASKOV
 Temperature:25.3Deg
 Manufactory:V-TAC EUROPE LTD
 System:HAAS-2000A (CAN)

Date:
 Humidity:65.0%
 Remarks:Kpuls = 0.28 %PST- 0.022 SVM- 0.009