

# TEST REPORT

**Applicant:** Wuxi IGEN TECH CO.,Ltd.  
**Address:** Block F4, No. 200, Linghu Avenue, Wuxi, Jiangsu, P. R. China  
**The following sample(s) was/were submitted and identified on behalf of the client as:**  
**Product name:** Stick Logger  
**Model:** LSW-3, LS4G-4,LS4G-4-C,LSR-4,LSW-3-C,LSG-3,LSG-3-C,LSE-3  
**Manufacturer:** Wuxi IGEN TECH CO.,Ltd.  
**Address:** Block F4, No. 200, Linghu Avenue, Wuxi, Jiangsu, P. R. China  
**Factory:** Wuxi IGEN TECH CO.,Ltd.  
**Address:** Block F4, No. 200, Linghu Avenue, Wuxi, Jiangsu, P. R. China  
**Sample Received Date:** Nov. 05, 2020  
**Testing Period:** Nov. 05, 2020~ Nov. 13, 2020

**Test Requirement:**

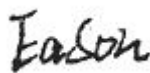
As specified by client, to determine the Lead(Pb), Cadmium(Cd), Mercury(Hg), Hexavalent Chromium(Cr(VI)), Polybrominated Biphenyls(PBBs), Polybrominated, Diphenyl Ethers(PBDEs), Bis-(2-ethylhexyl) Phthalate (DEHP), Benzyl butyl Phthalate (BBP), Dibutyl Phthalate (DBP) and Diisobutyl Phthalate(DIBP)contents in the submitted sample in accordance with RoHS directive 2011/65/EU and the amendment directive (EU) 2015/863.

**Conclusion:**

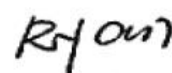
Pass

**Test Result(s):** Please refer to the following page(s);**Test Method:** Please refer to the following page(s);

Compiled by:



Reviewed by:



Approved by:



Date:

2020-11-17

**Test Result(s):**

## 1. Main test of shell

Part No.	Part Description	Test Items	XRF Screening Result(mg/kg)	Chemical Test Result(mg/kg)	Conclusion
1	Black plastic shell	Pb	BL	/	Pass
		Cd	BL	/	
		Hg	BL	/	
		Cr(Cr(VI))	BL	/	
		Br(PBBs&PBDEs)	BL	/	
		DIBP	/	N.D.	
		DEHP	/	N.D.	
		BBP	/	N.D.	
		DBP	/	N.D.	
2	Black plastic film	Pb	BL	/	Pass
		Cd	BL	/	
		Hg	BL	/	
		Cr(Cr(VI))	BL	/	
		Br(PBBs&PBDEs)	BL	/	
		DIBP	/	N.D.	
		DEHP	/	N.D.	
		BBP	/	N.D.	
		DBP	/	N.D.	
3	Transparent plastic	Pb	BL	/	Pass
		Cd	BL	/	
		Hg	BL	/	
		Cr(Cr(VI))	BL	/	
		Br(PBBs&PBDEs)	BL	/	
		DIBP	/	N.D.	
		DEHP	/	N.D.	
		BBP	/	N.D.	
		DBP	/	N.D.	
4	Qr code tag	Pb	BL	/	Pass
		Cd	BL	/	
		Hg	BL	/	
		Cr(Cr(VI))	BL	/	
		Br(PBBs&PBDEs)	BL	/	
		DIBP	/	N.D.	
		DEHP	/	N.D.	
		BBP	/	N.D.	

		DBP	/	N.D.	
5	silvery label	Pb	BL	/	Pass
		Cd	BL	/	
		Hg	BL	/	
		Cr(Cr(VI))	BL	/	
		Br(PBBs&PBDEs)	BL	/	
		DIBP	/	N.D.	
		DEHP	/	N.D.	
		BBP	/	N.D.	
		DBP	/	N.D.	
6	Black rubber	Pb	BL	/	Pass
		Cd	BL	/	
		Hg	BL	/	
		Cr(Cr(VI))	BL	/	
		Br(PBBs&PBDEs)	BL	/	
		DIBP	/	N.D.	
		DEHP	/	N.D.	
		BBP	/	N.D.	
		DBP	/	N.D.	
7	Black rubber plug	Pb	BL	/	Pass
		Cd	BL	/	
		Hg	BL	/	
		Cr(Cr(VI))	BL	/	
		Br(PBBs&PBDEs)	BL	/	
		DIBP	/	N.D.	
		DEHP	/	N.D.	
		BBP	/	N.D.	
		DBP	/	N.D.	

## 2.Main test of antenna

Part No.	Part Description	Test Items	XRF Screening Result(mg/kg)	Chemical Test Result(mg/kg)	Conclusion
8	Black plastic shell	Pb	BL	/	Pass
		Cd	BL	/	
		Hg	BL	/	
		Cr(Cr(VI))	BL	/	
		Br(PBBs&PBDEs)	BL	/	
		DIBP	/	N.D.	
		DEHP	/	N.D.	
		BBP	/	N.D.	

		DBP	/	N.D.	
9	Silvery metal shell	Pb	OL	29950 <sup>#1</sup>	Pass
		Cd	IN	24	
		Hg	BL	/	
		Cr(Cr(VI))	BL	/	
		Br(PBBs&PBDEs)	/	/	
		DIBP	/	/	
		DEHP	/	/	
		BBP	/	/	
		DBP	/	/	
10	White plastic	Pb	BL	/	Pass
		Cd	BL	/	
		Hg	BL	/	
		Cr(Cr(VI))	BL	/	
		Br(PBBs&PBDEs)	BL	/	
		DIBP	/	N.D.	
		DEHP	/	N.D.	
		BBP	/	N.D.	
		DBP	/	N.D.	
11	Metal pin	Pb	OL	26720 <sup>#1</sup>	Pass
		Cd	IN	14	
		Hg	BL	/	
		Cr(Cr(VI))	BL	/	
		Br(PBBs&PBDEs)	/	/	
		DIBP	/	/	
		DEHP	/	/	
		BBP	/	/	
		DBP	/	/	
12	Silvery metal	Pb	OL	29380 <sup>#1</sup>	Pass
		Cd	IN	35	
		Hg	BL	/	
		Cr(Cr(VI))	BL	/	
		Br(PBBs&PBDEs)	/	/	
		DIBP	/	/	
		DEHP	/	/	
		BBP	/	/	
		DBP	/	/	

13	Black casing tube	Pb	BL	/	Pass
		Cd	BL	/	
		Hg	BL	/	
		Cr(Cr(VI))	BL	/	
		Br(PBBs&PBDEs)	BL	/	
		DIBP	/	N.D.	
		DEHP	/	N.D.	
		BBP	/	N.D.	
		DBP	/	N.D.	
14	Cupreous metal	Pb	BL	/	Pass
		Cd	BL	/	
		Hg	BL	/	
		Cr(Cr(VI))	BL	/	
		Br(PBBs&PBDEs)	/	/	
		DIBP	/	/	
		DEHP	/	/	
		BBP	/	/	
		DBP	/	/	
15	Brown wire jacket	Pb	BL	/	Pass
		Cd	BL	/	
		Hg	BL	/	
		Cr(Cr(VI))	BL	/	
		Br(PBBs&PBDEs)	BL	/	
		DIBP	/	N.D.	
		DEHP	/	N.D.	
		BBP	/	N.D.	
		DBP	/	N.D.	
16	Silvery wire mesh	Pb	BL	/	Pass
		Cd	BL	/	
		Hg	BL	/	
		Cr(Cr(VI))	BL	/	
		Br(PBBs&PBDEs)	/	/	
		DIBP	/	/	
		DEHP	/	/	
		BBP	/	/	
		DBP	/	/	

17	Transparent I Wire jacket	Pb	BL	/	Pass
		Cd	BL	/	
		Hg	BL	/	
		Cr(Cr(VI))	BL	/	
		Br(PBBs&PBDEs)	BL	/	
		DIBP	/	N.D.	
		DEHP	/	N.D.	
		BBP	/	N.D.	
		DBP	/	N.D.	
18	Core wire	Pb	BL	/	Pass
		Cd	BL	/	
		Hg	BL	/	
		Cr(Cr(VI))	BL	/	
		Br(PBBs&PBDEs)	/	/	
		DIBP	/	/	
		DEHP	/	/	
		BBP	/	/	
		DBP	/	/	
19	Black rubber ring	Pb	BL	/	Pass
		Cd	BL	/	
		Hg	BL	/	
		Cr(Cr(VI))	BL	/	
		Br(PBBs&PBDEs)	BL	/	
		DIBP	/	N.D.	
		DEHP	/	N.D.	
		BBP	/	N.D.	
		DBP	/	N.D.	
20	Black foam	Pb	BL	/	Pass
		Cd	BL	/	
		Hg	BL	/	
		Cr(Cr(VI))	BL	/	
		Br(PBBs&PBDEs)	BL	/	
		DIBP	/	N.D.	
		DEHP	/	N.D.	
		BBP	/	N.D.	
		DBP	/	N.D.	

## 3. Main test - PCBA1

Part No.	Part Description	Test Items	XRF Screening Result(mg/kg)	Chemical Test Result(mg/kg)	Conclusion
21	Green PCB	Pb	BL	/	Pass
		Cd	BL	/	
		Hg	BL	/	
		Cr(Cr(VI))	BL	/	
		Br(PBBs&PBDEs)	IN	N.D.	
		DIBP	/	N.D.	
		DEHP	/	N.D.	
		BBP	/	N.D.	
		DBP	/	N.D.	
22	Silvery metal shell of J2 VGA interface	Pb	BL	/	Pass
		Cd	BL	/	
		Hg	BL	/	
		Cr(Cr(VI))	BL	/	
		Br(PBBs&PBDEs)	/	/	
		DIBP	/	/	
		DEHP	/	/	
		BBP	/	/	
		DBP	/	/	
23	Blue plastic of J2 VGA interface	Pb	BL	/	Pass
		Cd	BL	/	
		Hg	BL	/	
		Cr(Cr(VI))	BL	/	
		Br(PBBs&PBDEs)	IN	N.D.	
		DIBP	/	N.D.	
		DEHP	/	N.D.	
		BBP	/	N.D.	
		DBP	/	N.D.	
24	Metal pin of J2 VGA interface	Pb	BL	/	Pass
		Cd	BL	/	
		Hg	BL	/	
		Cr(Cr(VI))	BL	/	
		Br(PBBs&PBDEs)	/	/	
		DIBP	/	/	
		DEHP	/	/	
		BBP	/	/	
		DBP	/	/	

25	Black plastic of pin	Pb	BL	/	Pass
		Cd	BL	/	
		Hg	BL	/	
		Cr(Cr(VI))	BL	/	
		Br(PBBs&PBDEs)	IN	N.D.	
		DIBP	/	N.D.	
		DEHP	/	N.D.	
		BBP	/	N.D.	
		DBP	/	N.D.	
26	Metal plug pin of pin	Pb	BL	/	Pass
		Cd	BL	/	
		Hg	BL	/	
		Cr(Cr(VI))	BL	/	
		Br(PBBs&PBDEs)	/	/	
		DIBP	/	/	
		DEHP	/	/	
		BBP	/	/	
		DBP	/	/	
27	Tin solder	Pb	BL	/	Pass
		Cd	BL	/	
		Hg	BL	/	
		Cr(Cr(VI))	BL	/	
		Br(PBBs&PBDEs)	/	/	
		DIBP	/	/	
		DEHP	/	/	
		BBP	/	/	
		DBP	/	/	

## 4. Main test of PCBA2

Part No.	Part Description	Test Items	XRF Screening Result(mg/kg)	Chemical Test Result(mg/kg)	Conclusion
28	Green PCB	Pb	BL	/	Pass
		Cd	BL	/	
		Hg	BL	/	
		Cr(Cr(VI))	BL	/	
		Br(PBBs&PBDEs)	IN	N.D.	
		DIBP	/	N.D.	
		DEHP	/	N.D.	
		BBP	/	N.D.	
		DBP	/	N.D.	



29	Silvery metal shell of S1 touch switch	Pb	BL	/	Pass
		Cd	BL	/	
		Hg	BL	/	
		Cr(Cr(VI))	BL	/	
		Br(PBBs&PBDEs)	/	/	
		DIBP	/	/	
		DEHP	/	/	
		BBP	/	/	
		DBP	/	/	
30	Black plastic of S1 touch switch	Pb	BL	/	Pass
		Cd	BL	/	
		Hg	BL	/	
		Cr(Cr(VI))	BL	/	
		Br(PBBs&PBDEs)	BL	/	
		DIBP	/	N.D.	
		DEHP	/	N.D.	
		BBP	/	N.D.	
		DBP	/	N.D.	
31	Silvery metal shrapnel of S1 touch switch	Pb	BL	/	Pass
		Cd	BL	/	
		Hg	BL	/	
		Cr(Cr(VI))	IN	N.D.	
		Br(PBBs&PBDEs)	/	/	
		DIBP	/	/	
		DEHP	/	/	
		BBP	/	/	
		DBP	/	/	
32	Pin of S1 touch switch	Pb	BL	/	Pass
		Cd	BL	/	
		Hg	BL	/	
		Cr(Cr(VI))	BL	/	
		Br(PBBs&PBDEs)	/	/	
		DIBP	/	/	
		DEHP	/	/	
		BBP	/	/	
		DBP	/	/	

33	Black plastic button of S1 touch switch	Pb	BL	/	Pass
		Cd	BL	/	
		Hg	BL	/	
		Cr(Cr(VI))	BL	/	
		Br(PBBs&PBDEs)	BL	/	
		DIBP	/	N.D.	
		DEHP	/	N.D.	
		BBP	/	N.D.	
		DBP	/	N.D.	
34	Black plastic of J3 female header	Pb	BL	/	Pass
		Cd	BL	/	
		Hg	BL	/	
		Cr(Cr(VI))	BL	/	
		Br(PBBs&PBDEs)	IN	N.D.	
		DIBP	/	N.D.	
		DEHP	/	N.D.	
		BBP	/	N.D.	
		DBP	/	N.D.	
35	Metal contact sheet of J3 female header	Pb	BL	/	Pass
		Cd	BL	/	
		Hg	BL	/	
		Cr(Cr(VI))	BL	/	
		Br(PBBs&PBDEs)	/	/	
		DIBP	/	/	
		DEHP	/	/	
		BBP	/	/	
		DBP	/	/	
36	Black plastic of J7 female header	Pb	BL	/	Pass
		Cd	BL	/	
		Hg	BL	/	
		Cr(Cr(VI))	BL	/	
		Br(PBBs&PBDEs)	IN	N.D.	
		DIBP	/	N.D.	
		DEHP	/	N.D.	
		BBP	/	N.D.	
		DBP	/	N.D.	

37	Metal contact sheet of J7 female header	Pb	BL	/	Pass
		Cd	BL	/	
		Hg	BL	/	
		Cr(Cr(VI))	BL	/	
		Br(PBBs&PBDEs)	/	/	
		DIBP	/	/	
		DEHP	/	/	
		BBP	/	/	
38	Aluminum shell of C15 electrolytic capacitor	Pb	BL	/	Pass
		Cd	BL	/	
		Hg	BL	/	
		Cr(Cr(VI))	BL	/	
		Br(PBBs&PBDEs)	/	/	
		DIBP	/	/	
		DEHP	/	/	
		BBP	/	/	
39	Anode foil of C15 electrolytic capacitor	Pb	BL	/	Pass
		Cd	BL	/	
		Hg	BL	/	
		Cr(Cr(VI))	BL	/	
		Br(PBBs&PBDEs)	/	/	
		DIBP	/	/	
		DEHP	/	/	
		BBP	/	/	
40	Cathode foil of C15 electrolytic capacitor	Pb	BL	/	Pass
		Cd	BL	/	
		Hg	BL	/	
		Cr(Cr(VI))	BL	/	
		Br(PBBs&PBDEs)	/	/	
		DIBP	/	/	
		DEHP	/	/	
		BBP	/	/	
		DBP	/	/	

41	Electrolytic paper of C15 electrolytic capacitor	Pb	BL	/	Pass
		Cd	BL	/	
		Hg	BL	/	
		Cr(Cr(VI))	BL	/	
		Br(PBBs&PBDEs)	BL	/	
		DIBP	/	N.D.	
		DEHP	/	N.D.	
		BBP	/	N.D.	
42	Rubber blanket of C15 electrolytic capacitor	Pb	BL	/	Pass
		Cd	BL	/	
		Hg	BL	/	
		Cr(Cr(VI))	BL	/	
		Br(PBBs&PBDEs)	BL	/	
		DIBP	/	N.D.	
		DEHP	/	N.D.	
		BBP	/	N.D.	
43	Electrode pin of C15 electrolytic capacitor	Pb	BL	/	Pass
		Cd	BL	/	
		Hg	BL	/	
		Cr(Cr(VI))	BL	/	
		Br(PBBs&PBDEs)	/	/	
		DIBP	/	/	
		DEHP	/	/	
		BBP	/	/	
44	Plastic jacket of C15 electrolytic capacitor	Pb	BL	/	Pass
		Cd	BL	/	
		Hg	BL	/	
		Cr(Cr(VI))	BL	/	
		Br(PBBs&PBDEs)	BL	/	
		DIBP	/	N.D.	
		DEHP	/	N.D.	
		BBP	/	N.D.	
DBP	/	N.D.			

45	Aluminum shell of C16 electrolytic capacitor	Pb	BL	/	Pass
		Cd	BL	/	
		Hg	BL	/	
		Cr(Cr(VI))	BL	/	
		Br(PBBs&PBDEs)	/	/	
		DIBP	/	/	
		DEHP	/	/	
		BBP	/	/	
		DBP	/	/	
46	Anode foil of C16 electrolytic capacitor	Pb	BL	/	Pass
		Cd	BL	/	
		Hg	BL	/	
		Cr(Cr(VI))	BL	/	
		Br(PBBs&PBDEs)	/	/	
		DIBP	/	/	
		DEHP	/	/	
		BBP	/	/	
		DBP	/	/	
47	Cathode foil of C16 electrolytic capacitor	Pb	BL	/	Pass
		Cd	BL	/	
		Hg	BL	/	
		Cr(Cr(VI))	BL	/	
		Br(PBBs&PBDEs)	/	/	
		DIBP	/	/	
		DEHP	/	/	
		BBP	/	/	
		DBP	/	/	
48	Electrolytic paper of C16 electrolytic capacitor	Pb	BL	/	Pass
		Cd	BL	/	
		Hg	BL	/	
		Cr(Cr(VI))	BL	/	
		Br(PBBs&PBDEs)	BL	/	
		DIBP	/	N.D.	
		DEHP	/	N.D.	
		BBP	/	N.D.	
		DBP	/	N.D.	

49	Rubber blanket of C16 electrolytic capacitor	Pb	BL	/	Pass
		Cd	BL	/	
		Hg	BL	/	
		Cr(Cr(VI))	BL	/	
		Br(PBBs&PBDEs)	BL	/	
		DIBP	/	N.D.	
		DEHP	/	N.D.	
		BBP	/	N.D.	
50	Electrode pin of C16 electrolytic capacitor	Pb	BL	/	Pass
		Cd	BL	/	
		Hg	BL	/	
		Cr(Cr(VI))	BL	/	
		Br(PBBs&PBDEs)	/	/	
		DIBP	/	/	
		DEHP	/	/	
		BBP	/	/	
51	Plastic jacket of C16 electrolytic capacitor	Pb	BL	/	Pass
		Cd	BL	/	
		Hg	BL	/	
		Cr(Cr(VI))	BL	/	
		Br(PBBs&PBDEs)	BL	/	
		DIBP	/	N.D.	
		DEHP	/	N.D.	
		BBP	/	N.D.	
52	Magnetic core of L1 inductor	Pb	BL	/	Pass
		Cd	BL	/	
		Hg	BL	/	
		Cr(Cr(VI))	BL	/	
		Br(PBBs&PBDEs)	/	/	
		DIBP	/	/	
		DEHP	/	/	
		BBP	/	/	

53	Coil of L1 inductor	Pb	BL	/	Pass
		Cd	BL	/	
		Hg	BL	/	
		Cr(Cr(VI))	BL	/	
		Br(PBBs&PBDEs)	/	/	
		DIBP	/	/	
		DEHP	/	/	
		BBP	/	/	
		DBP	/	/	
54	U1 chip	Pb	BL	/	Pass
		Cd	BL	/	
		Hg	BL	/	
		Cr(Cr(VI))	BL	/	
		Br(PBBs&PBDEs)	BL	/	
		DIBP	/	N.D.	
		DEHP	/	N.D.	
		BBP	/	N.D.	
		DBP	/	N.D.	
55	U11 chip	Pb	BL	/	Pass
		Cd	BL	/	
		Hg	BL	/	
		Cr(Cr(VI))	BL	/	
		Br(PBBs&PBDEs)	BL	/	
		DIBP	/	N.D.	
		DEHP	/	N.D.	
		BBP	/	N.D.	
		DBP	/	N.D.	
56	SMD resistor	Pb	BL	/	Pass
		Cd	BL	/	
		Hg	BL	/	
		Cr(Cr(VI))	BL	/	
		Br(PBBs&PBDEs)	BL	/	
		DIBP	/	N.D.	
		DEHP	/	N.D.	
		BBP	/	N.D.	
		DBP	/	N.D.	

57	SMD capacitor	Pb	BL	/	Pass
		Cd	BL	/	
		Hg	BL	/	
		Cr(Cr(VI))	BL	/	
		Br(PBBs&PBDEs)	BL	/	
		DIBP	/	N.D.	
		DEHP	/	N.D.	
		BBP	/	N.D.	
		DBP	/	N.D.	
58	Tin solder	Pb	BL	/	Pass
		Cd	BL	/	
		Hg	BL	/	
		Cr(Cr(VI))	BL	/	
		Br(PBBs&PBDEs)	/	/	
		DIBP	/	/	
		DEHP	/	/	
		BBP	/	/	
		DBP	/	/	

## 5.Main test of PCBA3

Part No.	Part Description	Test Items	XRF Screening Result(mg/kg)	Chemical Test Result(mg/kg)	Conclusion
59	Green PCB	Pb	BL	/	Pass
		Cd	BL	/	
		Hg	BL	/	
		Cr(Cr(VI))	BL	/	
		Br(PBBs&PBDEs)	IN	N.D.	
		DIBP	/	N.D.	
		DEHP	/	N.D.	
		BBP	/	N.D.	
		DBP	/	N.D.	
60	Golden metal shell of ZNT1 antenna interface	Pb	OL	30810 <sup>#1</sup>	Pass
		Cd	IN	N.D.	
		Hg	BL	/	
		Cr(Cr(VI))	BL	/	
		Br(PBBs&PBDEs)	/	/	
		DIBP	/	/	
		DEHP	/	/	
		BBP	/	/	
		DBP	/	/	



61	White plastic of ZNT1 antenna interface	Pb	BL	/	Pass
		Cd	BL	/	
		Hg	BL	/	
		Cr(Cr(VI))	BL	/	
		Br(PBBs&PBDEs)	BL	/	
		DIBP	/	N.D.	
		DEHP	/	N.D.	
		BBP	/	N.D.	
		DBP	/	N.D.	
62	Pin of ZNT1 antenna interface	Pb	OL	25980 <sup>#1</sup>	Pass
		Cd	IN	26	
		Hg	BL	/	
		Cr(Cr(VI))	BL	/	
		Br(PBBs&PBDEs)	/	/	
		DIBP	/	/	
		DEHP	/	/	
		BBP	/	/	
		DBP	/	/	
63	Black wire jacket of ZNT1 antenna interface	Pb	BL	/	Pass
		Cd	BL	/	
		Hg	BL	/	
		Cr(Cr(VI))	BL	/	
		Br(PBBs&PBDEs)	BL	/	
		DIBP	/	N.D.	
		DEHP	/	N.D.	
		BBP	/	N.D.	
		DBP	/	N.D.	
64	Silvery wire mesh of ZNT1 antenna interface	Pb	BL	/	Pass
		Cd	BL	/	
		Hg	BL	/	
		Cr(Cr(VI))	BL	/	
		Br(PBBs&PBDEs)	/	/	
		DIBP	/	/	
		DEHP	/	/	
		BBP	/	/	
		DBP	/	/	

65	Transparent wire jacket of ZNT1 antenna interface	Pb	BL	/	Pass
		Cd	BL	/	
		Hg	BL	/	
		Cr(Cr(VI))	BL	/	
		Br(PBBs&PBDEs)	BL	/	
		DIBP	/	N.D.	
		DEHP	/	N.D.	
		BBP	/	N.D.	
66	Core wire of ZNT1 antenna interface	Pb	BL	/	Pass
		Cd	BL	/	
		Hg	BL	/	
		Cr(Cr(VI))	BL	/	
		Br(PBBs&PBDEs)	/	/	
		DIBP	/	/	
		DEHP	/	/	
		BBP	/	/	
67	Black casing tube of ZNT1 antenna interface	Pb	BL	/	Pass
		Cd	BL	/	
		Hg	BL	/	
		Cr(Cr(VI))	BL	/	
		Br(PBBs&PBDEs)	BL	/	
		DIBP	/	N.D.	
		DEHP	/	N.D.	
		BBP	/	N.D.	
68	Golden metal shell of ZNT1 antenna interface	Pb	BL	/	Pass
		Cd	BL	/	
		Hg	BL	/	
		Cr(Cr(VI))	BL	/	
		Br(PBBs&PBDEs)	/	/	
		DIBP	/	/	
		DEHP	/	/	
		BBP	/	/	
DBP	/	/			

69	Black plastic of ZNT1 antenna interface	Pb	BL	/	Pass
		Cd	BL	/	
		Hg	BL	/	
		Cr(Cr(VI))	BL	/	
		Br(PBBs&PBDEs)	BL	/	
		DIBP	/	N.D.	
		DEHP	/	N.D.	
		BBP	/	N.D.	
		DBP	/	N.D.	
70	Black plastic of J9 pin	Pb	BL	/	Pass
		Cd	BL	/	
		Hg	BL	/	
		Cr(Cr(VI))	BL	/	
		Br(PBBs&PBDEs)	IN	N.D.	
		DIBP	/	N.D.	
		DEHP	/	N.D.	
		BBP	/	N.D.	
		DBP	/	N.D.	
71	Metal plug pin of J9 pin	Pb	BL	/	Pass
		Cd	BL	/	
		Hg	BL	/	
		Cr(Cr(VI))	BL	/	
		Br(PBBs&PBDEs)	/	/	
		DIBP	/	/	
		DEHP	/	/	
		BBP	/	/	
		DBP	/	/	
72	SMD PCB	Pb	BL	/	Pass
		Cd	BL	/	
		Hg	BL	/	
		Cr(Cr(VI))	BL	/	
		Br(PBBs&PBDEs)	IN	N.D.	
		DIBP	/	N.D.	
		DEHP	/	N.D.	
		BBP	/	N.D.	
		DBP	/	N.D.	

73	SMD capacitor	Pb	BL	/	Pass
		Cd	BL	/	
		Hg	BL	/	
		Cr(Cr(VI))	BL	/	
		Br(PBBs&PBDEs)	BL	/	
		DIBP	/	N.D.	
		DEHP	/	N.D.	
		BBP	/	N.D.	
		DBP	/	N.D.	
74	Patch antenna interface	Pb	BL	/	Pass
		Cd	BL	/	
		Hg	BL	/	
		Cr(Cr(VI))	BL	/	
		Br(PBBs&PBDEs)	/	/	
		DIBP	/	/	
		DEHP	/	/	
		BBP	/	/	
		DBP	/	/	
75	SMD inductor	Pb	BL	/	Pass
		Cd	BL	/	
		Hg	BL	/	
		Cr(Cr(VI))	BL	/	
		Br(PBBs&PBDEs)	/	/	
		DIBP	/	/	
		DEHP	/	/	
		BBP	/	/	
		DBP	/	/	
76	IC	Pb	BL	/	Pass
		Cd	BL	/	
		Hg	BL	/	
		Cr(Cr(VI))	BL	/	
		Br(PBBs&PBDEs)	BL	/	
		DIBP	/	N.D.	
		DEHP	/	N.D.	
		BBP	/	N.D.	
		DBP	/	N.D.	

77	Crystal oscillator	Pb	BL	/	Pass
		Cd	BL	/	
		Hg	BL	/	
		Cr(Cr(VI))	BL	/	
		Br(PBBs&PBDEs)	BL	/	
		DIBP	/	N.D.	
		DEHP	/	N.D.	
		BBP	/	N.D.	
		DBP	/	N.D.	
78	Silvery metal shell	Pb	BL	/	Pass
		Cd	BL	/	
		Hg	BL	/	
		Cr(Cr(VI))	BL	/	
		Br(PBBs&PBDEs)	/	/	
		DIBP	/	/	
		DEHP	/	/	
		BBP	/	/	
		DBP	/	/	
79	Qr code tag	Pb	BL	/	Pass
		Cd	BL	/	
		Hg	BL	/	
		Cr(Cr(VI))	BL	/	
		Br(PBBs&PBDEs)	BL	/	
		DIBP	/	N.D.	
		DEHP	/	N.D.	
		BBP	/	N.D.	
		DBP	/	N.D.	
80	White colloidal	Pb	BL	/	Pass
		Cd	BL	/	
		Hg	BL	/	
		Cr(Cr(VI))	BL	/	
		Br(PBBs&PBDEs)	BL	/	
		DIBP	/	N.D.	
		DEHP	/	N.D.	
		BBP	/	N.D.	
		DBP	/	N.D.	

81	U10 chip	Pb	BL	/	Pass
		Cd	BL	/	
		Hg	BL	/	
		Cr(Cr(VI))	BL	/	
		Br(PBBs&PBDEs)	BL	/	
		DIBP	/	N.D.	
		DEHP	/	N.D.	
		BBP	/	N.D.	
		DBP	/	N.D.	
82	SMD resistor	Pb	BL	/	Pass
		Cd	BL	/	
		Hg	BL	/	
		Cr(Cr(VI))	IN	N.D.	
		Br(PBBs&PBDEs)	BL	/	
		DIBP	/	N.D.	
		DEHP	/	N.D.	
		BBP	/	N.D.	
		DBP	/	N.D.	
83	SMD capacitor	Pb	BL	/	Pass
		Cd	BL	/	
		Hg	BL	/	
		Cr(Cr(VI))	BL	/	
		Br(PBBs&PBDEs)	BL	/	
		DIBP	/	N.D.	
		DEHP	/	N.D.	
		BBP	/	N.D.	
		DBP	/	N.D.	
84	SMT LED lights	Pb	BL	/	Pass
		Cd	BL	/	
		Hg	BL	/	
		Cr(Cr(VI))	BL	/	
		Br(PBBs&PBDEs)	BL	/	
		DIBP	/	N.D.	
		DEHP	/	N.D.	
		BBP	/	N.D.	
		DBP	/	N.D.	

85	Tin solder	Pb	BL	/	Pass
		Cd	BL	/	
		Hg	BL	/	
		Cr(Cr(VI))	BL	/	
		Br(PBBs&PBDEs)	/	/	
		DIBP	/	/	
		DEHP	/	/	
		BBP	/	/	
DBP	/	/			

## 6.Main test of accessories

Part No.	Part Description	Test Items	XRF Screening Result(mg/kg)	Chemical Test Result(mg/kg)	Conclusion
86	Silvery metal screw	Pb	BL	/	Pass
		Cd	BL	/	
		Hg	BL	/	
		Cr(Cr(VI))	IN	N.D.	
		Br(PBBs&PBDEs)	/	/	
		DIBP	/	/	
		DEHP	/	/	
		BBP	/	/	
87	Metal gasket	Pb	BL	/	Pass
		Cd	BL	/	
		Hg	BL	/	
		Cr(Cr(VI))	IN	N.D.	
		Br(PBBs&PBDEs)	/	/	
		DIBP	/	/	
		DEHP	/	/	
		BBP	/	/	
88	Metal gasket	Pb	BL	/	Pass
		Cd	BL	/	
		Hg	BL	/	
		Cr(Cr(VI))	IN	N.D.	
		Br(PBBs&PBDEs)	/	/	
		DIBP	/	/	
		DEHP	/	/	
		BBP	/	/	
DBP	/	/			

## 7.Differential – LSG-3 of C -shell

Part No.	Part Description	Test Items	XRF Screening Result(mg/kg)	Chemical Test Result(mg/kg)	Conclusion
89	Black plastic shell	Pb	BL	/	Pass
		Cd	BL	/	
		Hg	BL	/	
		Cr(Cr(VI))	BL	/	
		Br(PBBs&PBDEs)	IN	N.D.	
		DIBP	/	N.D.	
		DEHP	/	N.D.	
		BBP	/	N.D.	
		DBP	/	N.D.	
90	Transparent rubber ring	Pb	BL	/	Pass
		Cd	BL	/	
		Hg	BL	/	
		Cr(Cr(VI))	BL	/	
		Br(PBBs&PBDEs)	BL	/	
		DIBP	/	N.D.	
		DEHP	/	N.D.	
		BBP	/	N.D.	
		DBP	/	N.D.	
91	Black plastic film	Pb	BL	/	Pass
		Cd	BL	/	
		Hg	BL	/	
		Cr(Cr(VI))	BL	/	
		Br(PBBs&PBDEs)	BL	/	
		DIBP	/	N.D.	
		DEHP	/	N.D.	
		BBP	/	N.D.	
		DBP	/	N.D.	
92	Silvery metal screw	Pb	BL	/	Pass
		Cd	BL	/	
		Hg	BL	/	
		Cr(Cr(VI))	IN	N.D.	
		Br(PBBs&PBDEs)	/	/	
		DIBP	/	/	
		DEHP	/	/	
		BBP	/	/	
		DBP	/	/	



## 8.Differential -LSG-3-C- PCBA1

Part No.	Part Description	Test Items	XRF Screening Result(mg/kg)	Chemical Test Result(mg/kg)	Conclusion
93	Magnet core of L2 inductance	Pb	BL	/	Pass
		Cd	BL	/	
		Hg	BL	/	
		Cr(Cr(VI))	BL	/	
		Br(PBBs&PBDEs)	/	/	
		DIBP	/	/	
		DEHP	/	/	
		BBP	/	/	
		DBP	/	/	
94	Coil of L2 inductance	Pb	BL	/	Pass
		Cd	BL	/	
		Hg	BL	/	
		Cr(Cr(VI))	BL	/	
		Br(PBBs&PBDEs)	/	/	
		DIBP	/	/	
		DEHP	/	/	
		BBP	/	/	
		DBP	/	/	
95	U12 chip	Pb	BL	/	Pass
		Cd	BL	/	
		Hg	BL	/	
		Cr(Cr(VI))	BL	/	
		Br(PBBs&PBDEs)	BL	/	
		DIBP	/	N.D.	
		DEHP	/	N.D.	
		BBP	/	N.D.	
		DBP	/	N.D.	
96	SMD diode	Pb	BL	/	Pass
		Cd	BL	/	
		Hg	BL	/	
		Cr(Cr(VI))	BL	/	
		Br(PBBs&PBDEs)	BL	/	
		DIBP	/	N.D.	
		DEHP	/	N.D.	
		BBP	/	N.D.	
		DBP	/	N.D.	

97	SMD audion	Pb	BL	/	Pass
		Cd	BL	/	
		Hg	BL	/	
		Cr(Cr(VI))	BL	/	
		Br(PBBs&PBDEs)	BL	/	
		DIBP	/	N.D.	
		DEHP	/	N.D.	
		BBP	/	N.D.	
		DBP	/	N.D.	

## 9.Differential- LSG - 3 - C – PCBA2

Part No.	Part Description	Test Items	XRF Screening Result(mg/kg)	Chemical Test Result(mg/kg)	Conclusion
98	Silvery metal shell of J8 SD card slot	Pb	BL	/	Pass
		Cd	BL	/	
		Hg	BL	/	
		Cr(Cr(VI))	BL	/	
		Br(PBBs&PBDEs)	/	/	
		DIBP	/	/	
		DEHP	/	/	
		BBP	/	/	
99	Black plastic of J8 SD card slot	Pb	BL	/	Pass
		Cd	BL	/	
		Hg	BL	/	
		Cr(Cr(VI))	BL	/	
		Br(PBBs&PBDEs)	BL	/	
		DIBP	/	N.D.	
		DEHP	/	N.D.	
		BBP	/	N.D.	
100	Silvery metal contact sheet of J8 SD card slot	Pb	BL	/	Pass
		Cd	BL	/	
		Hg	BL	/	
		Cr(Cr(VI))	BL	/	
		Br(PBBs&PBDEs)	/	/	
		DIBP	/	/	
		DEHP	/	/	
		BBP	/	/	
		DBP	/	/	

101	SMT PCB	Pb	BL	/	Pass
		Cd	BL	/	
		Hg	BL	/	
		Cr(Cr(VI))	BL	/	
		Br(PBBs&PBDEs)	BL	/	
		DIBP	/	N.D.	
		DEHP	/	N.D.	
		BBP	/	N.D.	
		DBP	/	N.D.	
102	Chip1	Pb	BL	/	Pass
		Cd	BL	/	
		Hg	BL	/	
		Cr(Cr(VI))	BL	/	
		Br(PBBs&PBDEs)	BL	/	
		DIBP	/	N.D.	
		DEHP	/	N.D.	
		BBP	/	N.D.	
		DBP	/	N.D.	
103	Chip2	Pb	BL	/	Pass
		Cd	BL	/	
		Hg	BL	/	
		Cr(Cr(VI))	BL	/	
		Br(PBBs&PBDEs)	BL	/	
		DIBP	/	N.D.	
		DEHP	/	N.D.	
		BBP	/	N.D.	
		DBP	/	N.D.	
104	U3 chip	Pb	BL	/	Pass
		Cd	BL	/	
		Hg	BL	/	
		Cr(Cr(VI))	BL	/	
		Br(PBBs&PBDEs)	BL	/	
		DIBP	/	N.D.	
		DEHP	/	N.D.	
		BBP	/	N.D.	
		DBP	/	N.D.	

105	U8 chip	Pb	BL	/	Pass
		Cd	BL	/	
		Hg	BL	/	
		Cr(Cr(VI))	BL	/	
		Br(PBBs&PBDEs)	BL	/	
		DIBP	/	N.D.	
		DEHP	/	N.D.	
		BBP	/	N.D.	
DBP	/	N.D.			

## 10.Differential- LSG - 3 - C – PCBA3

Part No.	Part Description	Test Items	XRF Screening Result(mg/kg)	Chemical Test Result(mg/kg)	Conclusion
106	Red PCB	Pb	BL	/	Pass
		Cd	BL	/	
		Hg	BL	/	
		Cr(Cr(VI))	BL	/	
		Br(PBBs&PBDEs)	IN	N.D.	
		DIBP	/	N.D.	
		DEHP	/	N.D.	
		BBP	/	N.D.	
DBP	/	N.D.			
107	Light green interface	Pb	BL	/	Pass
		Cd	BL	/	
		Hg	BL	/	
		Cr(Cr(VI))	BL	/	
		Br(PBBs&PBDEs)	IN	N.D.	
		DIBP	/	N.D.	
		DEHP	/	N.D.	
		BBP	/	N.D.	
DBP	/	N.D.			
108	Black sealant	Pb	BL	/	Pass
		Cd	BL	/	
		Hg	BL	/	
		Cr(Cr(VI))	BL	/	
		Br(PBBs&PBDEs)	IN	N.D.	
		DIBP	/	N.D.	
		DEHP	/	N.D.	
		BBP	/	N.D.	
DBP	/	N.D.			

109	Metal sheet	Pb	OL	26570 <sup>#1</sup>	Pass
		Cd	IN	N.D.	
		Hg	BL	/	
		Cr(Cr(VI))	BL	/	
		Br(PBBs&PBDEs)	BL	/	
		DIBP	/	N.D.	
		DEHP	/	N.D.	
		BBP	/	N.D.	
		DBP	/	N.D.	
110	Black rubber ring	Pb	BL	/	Pass
		Cd	BL	/	
		Hg	BL	/	
		Cr(Cr(VI))	BL	/	
		Br(PBBs&PBDEs)	BL	/	
		DIBP	/	N.D.	
		DEHP	/	N.D.	
		BBP	/	N.D.	
		DBP	/	N.D.	
111	Red rubber ring	Pb	BL	/	Pass
		Cd	BL	/	
		Hg	BL	/	
		Cr(Cr(VI))	BL	/	
		Br(PBBs&PBDEs)	BL	/	
		DIBP	/	N.D.	
		DEHP	/	N.D.	
		BBP	/	N.D.	
		DBP	/	N.D.	
112	Black plastic	Pb	BL	/	Pass
		Cd	BL	/	
		Hg	BL	/	
		Cr(Cr(VI))	BL	/	
		Br(PBBs&PBDEs)	IN	N.D.	
		DIBP	/	N.D.	
		DEHP	/	N.D.	
		BBP	/	N.D.	
		DBP	/	N.D.	

## 11. Differential -LSW - 3 - C - PCBA

Part No.	Part Description	Test Items	XRF Screening Result(mg/kg)	Chemical Test Result(mg/kg)	Conclusion
113	Black interface	Pb	BL	/	Pass
		Cd	BL	/	
		Hg	BL	/	
		Cr(Cr(VI))	BL	/	
		Br(PBBs&PBDEs)	IN	N.D.	
		DIBP	/	N.D.	
		DEHP	/	N.D.	
		BBP	/	N.D.	
114	Metal sheet	Pb	OL	25030 <sup>#1</sup>	Pass
		Cd	IN	10	
		Hg	BL	/	
		Cr(Cr(VI))	BL	/	
		Br(PBBs&PBDEs)	/	/	
		DIBP	/	/	
		DEHP	/	/	
		BBP	/	/	
115	Red rubber ring	Pb	BL	/	Pass
		Cd	BL	/	
		Hg	BL	/	
		Cr(Cr(VI))	BL	/	
		Br(PBBs&PBDEs)	BL	/	
		DIBP	/	N.D.	
		DEHP	/	N.D.	
		BBP	/	N.D.	
116	Black plastic	Pb	BL	/	Pass
		Cd	BL	/	
		Hg	BL	/	
		Cr(Cr(VI))	BL	/	
		Br(PBBs&PBDEs)	IN	N.D.	
		DIBP	/	N.D.	
		DEHP	/	N.D.	
		BBP	/	N.D.	
DBP	/	N.D.			

117	Black sealant	Pb	BL	/	Pass
		Cd	BL	/	
		Hg	BL	/	
		Cr(Cr(VI))	BL	/	
		Br(PBBs&PBDEs)	BL	/	
		DIBP	/	N.D.	
		DEHP	/	N.D.	
		BBP	/	N.D.	
DBP	/	N.D.			

## 12. Differential -LS4G - 4 - PCBA

Part No.	Part Description	Test Items	XRF Screening Result(mg/kg)	Chemical Test Result(mg/kg)	Conclusion
118	PCB	Pb	BL	/	Pass
		Cd	BL	/	
		Hg	BL	/	
		Cr(Cr(VI))	BL	/	
		Br(PBBs&PBDEs)	BL	/	
		DIBP	/	N.D.	
		DEHP	/	N.D.	
		BBP	/	N.D.	
DBP	/	N.D.			
119	SMD resistor	Pb	BL	/	Pass
		Cd	BL	/	
		Hg	BL	/	
		Cr(Cr(VI))	BL	/	
		Br(PBBs&PBDEs)	BL	/	
		DIBP	/	N.D.	
		DEHP	/	N.D.	
		BBP	/	N.D.	
DBP	/	N.D.			
120	SMD capacitor	Pb	BL	/	Pass
		Cd	BL	/	
		Hg	BL	/	
		Cr(Cr(VI))	BL	/	
		Br(PBBs&PBDEs)	BL	/	
		DIBP	/	N.D.	
		DEHP	/	N.D.	
		BBP	/	N.D.	
DBP	/	N.D.			

121	Patch blue electronic components	Pb	BL	/	Pass
		Cd	BL	/	
		Hg	BL	/	
		Cr(Cr(VI))	BL	/	
		Br(PBBs&PBDEs)	BL	/	
		DIBP	/	N.D.	
		DEHP	/	N.D.	
		BBP	/	N.D.	
		DBP	/	N.D.	
122	SMD inductor	Pb	BL	/	Pass
		Cd	BL	/	
		Hg	BL	/	
		Cr(Cr(VI))	IN	N.D.	
		Br(PBBs&PBDEs)	/	/	
		DIBP	/	/	
		DEHP	/	/	
		BBP	/	/	
		DBP	/	/	
123	Chip1	Pb	BL	/	Pass
		Cd	BL	/	
		Hg	BL	/	
		Cr(Cr(VI))	BL	/	
		Br(PBBs&PBDEs)	BL	/	
		DIBP	/	N.D.	
		DEHP	/	N.D.	
		BBP	/	N.D.	
		DBP	/	N.D.	
124	Chip2	Pb	BL	/	Pass
		Cd	BL	/	
		Hg	BL	/	
		Cr(Cr(VI))	BL	/	
		Br(PBBs&PBDEs)	BL	/	
		DIBP	/	N.D.	
		DEHP	/	N.D.	
		BBP	/	N.D.	
		DBP	/	N.D.	



125	Chip3	Pb	BL	/	Pass
		Cd	BL	/	
		Hg	BL	/	
		Cr(Cr(VI))	BL	/	
		Br(PBBs&PBDEs)	BL	/	
		DIBP	/	N.D.	
		DEHP	/	N.D.	
		BBP	/	N.D.	
		DBP	/	N.D.	
126	Chip4	Pb	BL	/	Pass
		Cd	BL	/	
		Hg	BL	/	
		Cr(Cr(VI))	BL	/	
		Br(PBBs&PBDEs)	BL	/	
		DIBP	/	N.D.	
		DEHP	/	N.D.	
		BBP	/	N.D.	
		DBP	/	N.D.	
127	Chip5	Pb	BL	/	Pass
		Cd	BL	/	
		Hg	BL	/	
		Cr(Cr(VI))	BL	/	
		Br(PBBs&PBDEs)	BL	/	
		DIBP	/	N.D.	
		DEHP	/	N.D.	
		BBP	/	N.D.	
		DBP	/	N.D.	
128	Chip 6	Pb	BL	/	Pass
		Cd	BL	/	
		Hg	BL	/	
		Cr(Cr(VI))	BL	/	
		Br(PBBs&PBDEs)	BL	/	
		DIBP	/	N.D.	
		DEHP	/	N.D.	
		BBP	/	N.D.	
		DBP	/	N.D.	

129	Chip 7	Pb	BL	/	Pass
		Cd	BL	/	
		Hg	BL	/	
		Cr(Cr(VI))	BL	/	
		Br(PBBs&PBDEs)	BL	/	
		DIBP	/	N.D.	
		DEHP	/	N.D.	
		BBP	/	N.D.	
		DBP	/	N.D.	
130	Crystal oscillator	Pb	BL	/	Pass
		Cd	BL	/	
		Hg	BL	/	
		Cr(Cr(VI))	BL	/	
		Br(PBBs&PBDEs)	BL	/	
		DIBP	/	N.D.	
		DEHP	/	N.D.	
		BBP	/	N.D.	
		DBP	/	N.D.	

## 13. Differential -LSR - 4 - PCBA

Part No.	Part Description	Test Items	XRF Screening Result(mg/kg)	Chemical Test Result(mg/kg)	Conclusion
131	U13 chip	Pb	BL	/	Pass
		Cd	BL	/	
		Hg	BL	/	
		Cr(Cr(VI))	BL	/	
		Br(PBBs&PBDEs)	BL	/	
		DIBP	/	N.D.	
		DEHP	/	N.D.	
		BBP	/	N.D.	
		DBP	/	N.D.	
132	X2 crystal	Pb	BL	/	Pass
		Cd	BL	/	
		Hg	BL	/	
		Cr(Cr(VI))	IN	N.D.	
		Br(PBBs&PBDEs)	BL	/	
		DIBP	/	N.D.	
		DEHP	/	N.D.	
		BBP	/	N.D.	
		DBP	/	N.D.	

## 4. Differential -LSE-3- shell

Part No.	Part Description	Test Items	XRF Screening Result(mg/kg)	Chemical Test Result(mg/kg)	Conclusion
133	Black plastic shell	Pb	BL	/	Pass
		Cd	BL	/	
		Hg	BL	/	
		Cr(Cr(VI))	BL	/	
		Br(PBBs&PBDEs)	BL	/	
		DIBP	/	N.D.	
		DEHP	/	N.D.	
		BBP	/	N.D.	
134	Black plastic	Pb	BL	/	Pass
		Cd	BL	/	
		Hg	BL	/	
		Cr(Cr(VI))	BL	/	
		Br(PBBs&PBDEs)	IN	N.D.	
		DIBP	/	N.D.	
		DEHP	/	N.D.	
		BBP	/	N.D.	
135	Transparent rubber ring	Pb	BL	/	Pass
		Cd	BL	/	
		Hg	BL	/	
		Cr(Cr(VI))	BL	/	
		Br(PBBs&PBDEs)	BL	/	
		DIBP	/	N.D.	
		DEHP	/	N.D.	
		BBP	/	N.D.	
136	Black plastic cap	Pb	BL	/	Pass
		Cd	BL	/	
		Hg	BL	/	
		Cr(Cr(VI))	BL	/	
		Br(PBBs&PBDEs)	BL	/	
		DIBP	/	N.D.	
		DEHP	/	N.D.	
		BBP	/	N.D.	
DBP	/	N.D.			

137	Black plastic shell	Pb	BL	/	Pass
		Cd	BL	/	
		Hg	BL	/	
		Cr(Cr(VI))	BL	/	
		Br(PBBs&PBDEs)	BL	/	
		DIBP	/	N.D.	
		DEHP	/	N.D.	
		BBP	/	N.D.	
138	Black rubber pad	Pb	BL	/	Pass
		Cd	BL	/	
		Hg	BL	/	
		Cr(Cr(VI))	BL	/	
		Br(PBBs&PBDEs)	BL	/	
		DIBP	/	N.D.	
		DEHP	/	N.D.	
		BBP	/	N.D.	
139	Black rubber block	Pb	BL	/	Pass
		Cd	BL	/	
		Hg	BL	/	
		Cr(Cr(VI))	BL	/	
		Br(PBBs&PBDEs)	BL	/	
		DIBP	/	N.D.	
		DEHP	/	N.D.	
		BBP	/	N.D.	
140	Black soft plastic	Pb	BL	/	Pass
		Cd	BL	/	
		Hg	BL	/	
		Cr(Cr(VI))	BL	/	
		Br(PBBs&PBDEs)	BL	/	
		DIBP	/	N.D.	
		DEHP	/	N.D.	
		BBP	/	N.D.	
DBP	/	N.D.			

141	Silvery metal screw	Pb	BL	/	Pass
		Cd	BL	/	
		Hg	BL	/	
		Cr(Cr(VI))	IN	N.D.	
		Br(PBBs&PBDEs)	/	/	
		DIBP	/	/	
		DEHP	/	/	
		BBP	/	/	
		DBP	/	/	

## 15. Differential -LSE - 3 - PCBA

Part No.	Part Description	Test Items	XRF Screening Result(mg/kg)	Chemical Test Result(mg/kg)	Conclusion
142	Silvery metal shell of S1 touch switch	Pb	BL	/	Pass
		Cd	BL	/	
		Hg	BL	/	
		Cr(Cr(VI))	BL	/	
		Br(PBBs&PBDEs)	/	/	
		DIBP	/	/	
		DEHP	/	/	
		BBP	/	/	
		DBP	/	/	
143	Black plastic of S1 touch switch	Pb	BL	/	Pass
		Cd	BL	/	
		Hg	BL	/	
		Cr(Cr(VI))	BL	/	
		Br(PBBs&PBDEs)	BL	/	
		DIBP	/	N.D.	
		DEHP	/	N.D.	
		BBP	/	N.D.	
		DBP	/	N.D.	
144	Silvery metal shrapnel of S1 touch switch	Pb	BL	/	Pass
		Cd	BL	/	
		Hg	BL	/	
		Cr(Cr(VI))	IN	N.D.	
		Br(PBBs&PBDEs)	/	/	
		DIBP	/	/	
		DEHP	/	/	
		BBP	/	/	
		DBP	/	/	

145	Pin of S1 touch switch	Pb	BL	/	Pass
		Cd	BL	/	
		Hg	BL	/	
		Cr(Cr(VI))	BL	/	
		Br(PBBs&PBDEs)	/	/	
		DIBP	/	/	
		DEHP	/	/	
		BBP	/	/	
		DBP	/	/	
146	Black plastic button	Pb	BL	/	Pass
		Cd	BL	/	
		Hg	BL	/	
		Cr(Cr(VI))	BL	/	
		Br(PBBs&PBDEs)	BL	/	
		DIBP	/	N.D.	
		DEHP	/	N.D.	
		BBP	/	N.D.	
		DBP	/	N.D.	
147	Silvery metal shell of U9USB interface	Pb	BL	/	Pass
		Cd	BL	/	
		Hg	BL	/	
		Cr(Cr(VI))	BL	/	
		Br(PBBs&PBDEs)	/	/	
		DIBP	/	/	
		DEHP	/	/	
		BBP	/	/	
		DBP	/	/	
148	Black plastic of U9USB interface	Pb	BL	/	Pass
		Cd	BL	/	
		Hg	BL	/	
		Cr(Cr(VI))	BL	/	
		Br(PBBs&PBDEs)	IN	N.D.	
		DIBP	/	N.D.	
		DEHP	/	N.D.	
		BBP	/	N.D.	
		DBP	/	N.D.	

149	Transparent plastic sheet of U9USB interface	Pb	BL	/	Pass
		Cd	BL	/	
		Hg	BL	/	
		Cr(Cr(VI))	BL	/	
		Br(PBBs&PBDEs)	BL	/	
		DIBP	/	N.D.	
		DEHP	/	N.D.	
		BBP	/	N.D.	
		DBP	/	N.D.	
150	Yellow LED of U9USB interface	Pb	BL	/	Pass
		Cd	BL	/	
		Hg	BL	/	
		Cr(Cr(VI))	BL	/	
		Br(PBBs&PBDEs)	IN	N.D.	
		DIBP	/	N.D.	
		DEHP	/	N.D.	
		BBP	/	N.D.	
		DBP	/	N.D.	
151	Green LED of U9USB interface	Pb	BL	/	Pass
		Cd	BL	/	
		Hg	BL	/	
		Cr(Cr(VI))	BL	/	
		Br(PBBs&PBDEs)	IN	N.D.	
		DIBP	/	N.D.	
		DEHP	/	N.D.	
		BBP	/	N.D.	
		DBP	/	N.D.	
152	Led pin of U9USB interface	Pb	BL	/	Pass
		Cd	BL	/	
		Hg	BL	/	
		Cr(Cr(VI))	BL	/	
		Br(PBBs&PBDEs)	/	/	
		DIBP	/	/	
		DEHP	/	/	
		BBP	/	/	
		DBP	/	/	

153	Black plastic film of U9USB interface	Pb	BL	/	Pass
		Cd	BL	/	
		Hg	BL	/	
		Cr(Cr(VI))	BL	/	
		Br(PBBs&PBDEs)	IN	N.D.	
		DIBP	/	N.D.	
		DEHP	/	N.D.	
		BBP	/	N.D.	
		DBP	/	N.D.	
154	Metal pin of U9USB interface of U9USB interface	Pb	BL	/	Pass
		Cd	BL	/	
		Hg	BL	/	
		Cr(Cr(VI))	BL	/	
		Br(PBBs&PBDEs)	/	/	
		DIBP	/	/	
		DEHP	/	/	
		BBP	/	/	
		DBP	/	/	
155	Black PCB1 of U9USB interface of U9USB interface	Pb	BL	/	Pass
		Cd	BL	/	
		Hg	BL	/	
		Cr(Cr(VI))	BL	/	
		Br(PBBs&PBDEs)	IN	N.D.	
		DIBP	/	N.D.	
		DEHP	/	N.D.	
		BBP	/	N.D.	
		DBP	/	N.D.	
156	Beige terminal of beige plastic of U9USB interface	Pb	BL	/	Pass
		Cd	BL	/	
		Hg	BL	/	
		Cr(Cr(VI))	BL	/	
		Br(PBBs&PBDEs)	IN	N.D.	
		DIBP	/	N.D.	
		DEHP	/	N.D.	
		BBP	/	N.D.	
		DBP	/	N.D.	



157	Beige terminal of metal contact of U9USB interface	Pb	BL	/	Pass
		Cd	BL	/	
		Hg	BL	/	
		Cr(Cr(VI))	BL	/	
		Br(PBBs&PBDEs)	/	/	
		DIBP	/	/	
		DEHP	/	/	
		BBP	/	/	
		DBP	/	/	
158	Chip1 of U9USB interface	Pb	BL	/	Pass
		Cd	BL	/	
		Hg	BL	/	
		Cr(Cr(VI))	BL	/	
		Br(PBBs&PBDEs)	BL	/	
		DIBP	/	N.D.	
		DEHP	/	N.D.	
		BBP	/	N.D.	
		DBP	/	N.D.	
159	Chip2 of U9USB interface	Pb	BL	/	Pass
		Cd	BL	/	
		Hg	BL	/	
		Cr(Cr(VI))	BL	/	
		Br(PBBs&PBDEs)	BL	/	
		DIBP	/	N.D.	
		DEHP	/	N.D.	
		BBP	/	N.D.	
		DBP	/	N.D.	
160	Chip3 of U9USB interface	Pb	BL	/	Pass
		Cd	BL	/	
		Hg	BL	/	
		Cr(Cr(VI))	BL	/	
		Br(PBBs&PBDEs)	BL	/	
		DIBP	/	N.D.	
		DEHP	/	N.D.	
		BBP	/	N.D.	
		DBP	/	N.D.	

161	Crystal oscillator of U9USB interface	Pb	BL	/	Pass
		Cd	BL	/	
		Hg	BL	/	
		Cr(Cr(VI))	BL	/	
		Br(PBBs&PBDEs)	BL	/	
		DIBP	/	N.D.	
		DEHP	/	N.D.	
		BBP	/	N.D.	
162	SMD resistor of U9USB interface	Pb	BL	/	Pass
		Cd	BL	/	
		Hg	BL	/	
		Cr(Cr(VI))	BL	/	
		Br(PBBs&PBDEs)	BL	/	
		DIBP	/	N.D.	
		DEHP	/	N.D.	
		BBP	/	N.D.	
163	SMD capacitor of U9USB interface	Pb	BL	/	Pass
		Cd	BL	/	
		Hg	BL	/	
		Cr(Cr(VI))	BL	/	
		Br(PBBs&PBDEs)	BL	/	
		DIBP	/	N.D.	
		DEHP	/	N.D.	
		BBP	/	N.D.	
164	Tin solder of U9USB interface	Pb	BL	/	Pass
		Cd	BL	/	
		Hg	BL	/	
		Cr(Cr(VI))	BL	/	
		Br(PBBs&PBDEs)	/	/	
		DIBP	/	/	
		DEHP	/	/	
		BBP	/	/	
DBP	/	/			

165	Black PCB2 of U9USB interface	Pb	BL	/	Pass
		Cd	BL	/	
		Hg	BL	/	
		Cr(Cr(VI))	BL	/	
		Br(PBBs&PBDEs)	IN	N.D.	
		DIBP	/	N.D.	
		DEHP	/	N.D.	
		BBP	/	N.D.	
		DBP	/	N.D.	
166	Beige interface of beige plastic of U9USB interface	Pb	BL	/	Pass
		Cd	BL	/	
		Hg	BL	/	
		Cr(Cr(VI))	BL	/	
		Br(PBBs&PBDEs)	IN	N.D.	
		DIBP	/	N.D.	
		DEHP	/	N.D.	
		BBP	/	N.D.	
		DBP	/	N.D.	
167	Beige interface of metal pin of U9USB interface	Pb	BL	/	Pass
		Cd	BL	/	
		Hg	BL	/	
		Cr(Cr(VI))	BL	/	
		Br(PBBs&PBDEs)	BL	/	
		DIBP	/	N.D.	
		DEHP	/	N.D.	
		BBP	/	N.D.	
		DBP	/	N.D.	
168	Filter of black plastic shell of U9USB interface	Pb	BL	/	Pass
		Cd	BL	/	
		Hg	BL	/	
		Cr(Cr(VI))	BL	/	
		Br(PBBs&PBDEs)	BL	/	
		DIBP	/	N.D.	
		DEHP	/	N.D.	
		BBP	/	N.D.	
		DBP	/	N.D.	

169	Filter of magnetic core of U9USB interface	Pb	BL	/	Pass
		Cd	BL	/	
		Hg	BL	/	
		Cr(Cr(VI))	BL	/	
		Br(PBBs&PBDEs)	/	/	
		DIBP	/	/	
		DEHP	/	/	
		BBP	/	/	
		DBP	/	/	
170	Filter of copper coil of U9USB interface	Pb	BL	/	Pass
		Cd	BL	/	
		Hg	BL	/	
		Cr(Cr(VI))	BL	/	
		Br(PBBs&PBDEs)	/	/	
		DIBP	/	/	
		DEHP	/	/	
		BBP	/	/	
		DBP	/	/	
171	Filter of green coil of U9USB interface	Pb	BL	/	Pass
		Cd	BL	/	
		Hg	BL	/	
		Cr(Cr(VI))	BL	/	
		Br(PBBs&PBDEs)	/	/	
		DIBP	/	/	
		DEHP	/	/	
		BBP	/	/	
		DBP	/	/	
172	Filter of red coil of U9USB interface	Pb	BL	/	Pass
		Cd	BL	/	
		Hg	BL	/	
		Cr(Cr(VI))	BL	/	
		Br(PBBs&PBDEs)	/	/	
		DIBP	/	/	
		DEHP	/	/	
		BBP	/	/	
		DBP	/	/	

173	Filter colloid of U9USB interface	Pb	BL	/	Pass
		Cd	BL	/	
		Hg	BL	/	
		Cr(Cr(VI))	BL	/	
		Br(PBBs&PBDEs)	BL	/	
		DIBP	/	N.D.	
		DEHP	/	N.D.	
		BBP	/	N.D.	
		DBP	/	N.D.	
174	SMD capacitor of U9USB interface	Pb	BL	/	Pass
		Cd	BL	/	
		Hg	BL	/	
		Cr(Cr(VI))	BL	/	
		Br(PBBs&PBDEs)	BL	/	
		DIBP	/	N.D.	
		DEHP	/	N.D.	
		BBP	/	N.D.	
		DBP	/	N.D.	
175	Capacitance resistance of U9USB interface	Pb	BL	/	Pass
		Cd	BL	/	
		Hg	BL	/	
		Cr(Cr(VI))	BL	/	
		Br(PBBs&PBDEs)	BL	/	
		DIBP	/	N.D.	
		DEHP	/	N.D.	
		BBP	/	N.D.	
		DBP	/	N.D.	
176	Tin solder of U9USB interface	Pb	BL	/	Pass
		Cd	BL	/	
		Hg	BL	/	
		Cr(Cr(VI))	BL	/	
		Br(PBBs&PBDEs)	/	/	
		DIBP	/	/	
		DEHP	/	/	
		BBP	/	/	
		DBP	/	/	

177	Pin of D1LED lamp	Pb	BL	/	Pass
		Cd	BL	/	
		Hg	BL	/	
		Cr(Cr(VI))	BL	/	
		Br(PBBs&PBDEs)	BL	/	
		DIBP	/	N.D.	
		DEHP	/	N.D.	
		BBP	/	N.D.	
178	Transparent lamp body of D1LED lamp	Pb	BL	/	Pass
		Cd	BL	/	
		Hg	BL	/	
		Cr(Cr(VI))	BL	/	
		Br(PBBs&PBDEs)	IN	N.D.	
		DIBP	/	N.D.	
		DEHP	/	N.D.	
		BBP	/	N.D.	
179	Translucent plastic isolation column of D1LED lamp	Pb	BL	/	Pass
		Cd	BL	/	
		Hg	BL	/	
		Cr(Cr(VI))	BL	/	
		Br(PBBs&PBDEs)	BL	/	
		DIBP	/	N.D.	
		DEHP	/	N.D.	
		BBP	/	N.D.	
		DBP	/	N.D.	

## 16 Differential --LSE-3- accessories

Part No.	Part Description	Test Items	XRF Screening Result(mg/kg)	Chemical Test Result(mg/kg)	Conclusion
180	Yellow plastic	Pb	BL	/	Pass
		Cd	BL	/	
		Hg	BL	/	
		Cr(Cr(VI))	BL	/	
		Br(PBBs&PBDEs)	BL	/	
		DIBP	/	N.D.	
		DEHP	/	N.D.	
		BBP	/	N.D.	
		DBP	/	N.D.	

## 17 .Differential -- LSG - 3 - PCBA1

Part No.	Part Description	Test Items	XRF Screening Result(mg/kg)	Chemical Test Result(mg/kg)	Conclusion
181	Aluminum shell of C18 electrolytic capacitor	Pb	BL	/	Pass
		Cd	BL	/	
		Hg	BL	/	
		Cr(Cr(VI))	BL	/	
		Br(PBBs&PBDEs)	/	/	
		DIBP	/	/	
		DEHP	/	/	
		BBP	/	/	
182	Anode foil of C18 electrolytic capacitor	Pb	BL	/	Pass
		Cd	BL	/	
		Hg	BL	/	
		Cr(Cr(VI))	BL	/	
		Br(PBBs&PBDEs)	/	/	
		DIBP	/	/	
		DEHP	/	/	
		BBP	/	/	
183	Cathode foil of C18 electrolytic capacitor	Pb	BL	/	Pass
		Cd	BL	/	
		Hg	BL	/	
		Cr(Cr(VI))	BL	/	
		Br(PBBs&PBDEs)	/	/	
		DIBP	/	/	
		DEHP	/	/	
		BBP	/	/	
184	Electrolytic paper of C18 electrolytic capacitor	Pb	BL	/	Pass
		Cd	BL	/	
		Hg	BL	/	
		Cr(Cr(VI))	BL	/	
		Br(PBBs&PBDEs)	BL	/	
		DIBP	/	N.D.	
		DEHP	/	N.D.	
		BBP	/	N.D.	
DBP	/	N.D.			

185	Rubber blanket of C18 electrolytic capacitor	Pb	BL	/	Pass
		Cd	BL	/	
		Hg	BL	/	
		Cr(Cr(VI))	BL	/	
		Br(PBBs&PBDEs)	BL	/	
		DIBP	/	N.D.	
		DEHP	/	N.D.	
		BBP	/	N.D.	
186	Electrode pin of C18 electrolytic capacitor	Pb	BL	/	Pass
		Cd	BL	/	
		Hg	BL	/	
		Cr(Cr(VI))	BL	/	
		Br(PBBs&PBDEs)	/	/	
		DIBP	/	/	
		DEHP	/	/	
		BBP	/	/	
187	Plastic jacket of C18 electrolytic capacitor	Pb	BL	/	Pass
		Cd	BL	/	
		Hg	BL	/	
		Cr(Cr(VI))	BL	/	
		Br(PBBs&PBDEs)	BL	/	
		DIBP	/	N.D.	
		DEHP	/	N.D.	
		BBP	/	N.D.	

## 8. Differential - LSG - 3 - PCBA2

Part No.	Part Description	Test Items	XRF Screening Result(mg/kg)	Chemical Test Result(mg/kg)	Conclusion
188	PCB	Pb	BL	/	Pass
		Cd	BL	/	
		Hg	BL	/	
		Cr(Cr(VI))	BL	/	
		Br(PBBs&PBDEs)	IN	N.D.	
		DIBP	/	N.D.	
		DEHP	/	N.D.	
		BBP	/	N.D.	
DBP	/	N.D.			



189	SMD resistor	Pb	BL	/	Pass
		Cd	BL	/	
		Hg	BL	/	
		Cr(Cr(VI))	BL	/	
		Br(PBBs&PBDEs)	BL	/	
		DIBP	/	N.D.	
		DEHP	/	N.D.	
		BBP	/	N.D.	
		DBP	/	N.D.	
190	SMD capacitor	Pb	BL	/	Pass
		Cd	BL	/	
		Hg	BL	/	
		Cr(Cr(VI))	BL	/	
		Br(PBBs&PBDEs)	BL	/	
		DIBP	/	N.D.	
		DEHP	/	N.D.	
		BBP	/	N.D.	
		DBP	/	N.D.	
191	Crystal oscillator	Pb	BL	/	Pass
		Cd	BL	/	
		Hg	BL	/	
		Cr(Cr(VI))	BL	/	
		Br(PBBs&PBDEs)	BL	/	
		DIBP	/	N.D.	
		DEHP	/	N.D.	
		BBP	/	N.D.	
		DBP	/	N.D.	
192	Chip1	Pb	BL	/	Pass
		Cd	BL	/	
		Hg	BL	/	
		Cr(Cr(VI))	BL	/	
		Br(PBBs&PBDEs)	BL	/	
		DIBP	/	N.D.	
		DEHP	/	N.D.	
		BBP	/	N.D.	
		DBP	/	N.D.	

193	Chip2	Pb	BL	/	Pass
		Cd	BL	/	
		Hg	BL	/	
		Cr(Cr(VI))	BL	/	
		Br(PBBs&PBDEs)	BL	/	
		DIBP	/	N.D.	
		DEHP	/	N.D.	
		BBP	/	N.D.	
		DBP	/	N.D.	

Note:

- 1.N.D. = Not Detected (<MDL) MDL = Method Detection Limit  
mg/kg = ppm =0.0001% / =Not Regulated or Not Applicable
2. BL = Under the XRF screening limit  
IN = Further chemical test will be conducted when the screening result inconclusive  
OL = Further chemical test will be conducted while the result is above the screening limit.
3. For metal samples, The sample is negative for Cr(VI), if the Cr(VI) concentration is less than 0.10  $\mu\text{g}/\text{cm}^2$ ,The coating is considered a non- Cr(VI) based coating;  
The sample is positive for Cr(VI), if the Cr(VI) concentration is greater than 0.13  $\mu\text{g}/\text{cm}^2$ ,  
The sample coating is considered to contain Cr(VI);  
The result is considered to be inconclusive, The Cr(VI) concentration is between the 0.10 $\mu\text{g}/\text{cm}^2$  and 0.13  $\mu\text{g}/\text{cm}^2$ ,Unavoidable coating variations may influence the determination.  
Because the storage condition and production date of the sample are not known, the test results of the sample of hexavalent chromium can only represent the state of hexavalent chromium in the samples tested.

Remark:

1. The screening results are only used for reference.
2. When conducting the test for PBBs&PBDEs, XRF was introduced to screen Br Exclusively; When conducting the test for Hexavalent Chromium, XRF was introduced to screen Chromium exclusively.
3. According to the client's statement , the material of the sample(s) comply with RoHS directive 2011/65/EU Annex III Exemption, Corresponding exemption clause:  
#1 6(c) Lead is exempted as copper alloy containing up to 4% lead by weight .

**Test Method:**

when screening results exceed the XRF screening limit in IEC62321-3-1: 2013, further use of chemical methods are required to test the Lead(Pb), Cadmium(Cd), Mercury(Hg), Hexavalent Chromium(Cr(VI)), Polybrominated Biphenyls(PBBs) and Polybrominated Diphenyl Ethers(PBDEs)

## 1. XRF screening limits in mg/kg for regulated elements according to IEC 62321-3-1:2013

Element	Limit of IEC 62321-3-1:2013 (mg/kg)		
	Polymers	Metals	Composite material
Pb	BL≤(700-3σ) <X <(1300+3σ)≤OL	BL≤(700-3σ) <X <(1300+3σ)≤OL	BL≤(500-3σ)<X <(1500+3σ)≤OL
Cd	BL≤(70-3σ)<X < (130+3σ) ≤OL	BL≤(70-3σ)<X < (130+3σ) ≤OL	LOD <X<(150+3σ) ≤OL
Hg	BL≤(700-3σ)<X <(1300+3σ)≤OL	BL≤(700-3σ)<X <(1300+3σ)≤OL	BL≤(500-3σ)<X <(1500+3σ)≤OL
Cr	BL≤(700-3σ)< X	BL≤(700-3σ)< X	BL≤(500-3σ)< X
Br	BL≤(300-3σ)< X	/	BL≤(250-3σ)< X

Note: BL=Under the XRF screening limit OL=Over the XRF screening limit

X=The symbol "X" marks the region where further investigation is necessary.

3σ =The reproducibility of analytical instruments LOD= Detection limit

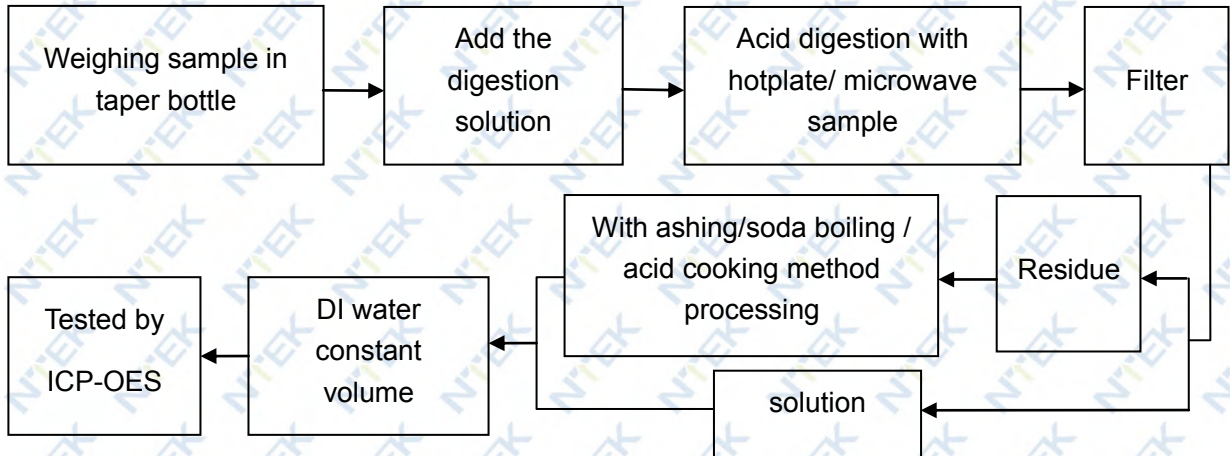
## 2. Chemical Test

Test item	Test method	Test instrument	MDL	Limit
Lead (Pb)	IEC 62321-5:2013 Ed.1.0	ICP-OES	10 mg/kg	1000 mg/kg
Cadmium (Cd)	IEC 62321-5:2013 Ed.1.0	ICP-OES	10mg/kg	100 mg/kg
Mercury (Hg)	IEC 62321-4:2013+AMD1:2017	ICP-OES	10mg/kg	1000 mg/kg
Hexavalent Chromium(Cr(VI))	IEC62321-7-1:2015 Ed.1.0	UV-Vis	0.10μg/cm <sup>2</sup>	1000 mg/kg
	IEC 62321-7-2:2017 Ed.1.0		10 mg/kg	
Polybrominated Biphenyls(PBBs)	IEC 62321-6:2015 Ed.1.0	GC-MS	100 mg/kg	1000 mg/kg
Polybrominated, Diphenyl Ethers(PBDEs)	IEC 62321-6:2015 Ed.1.0	GC-MS	100 mg/kg	1000 mg/kg
Bis-(2-ethylhexyl) Phthalate (DEHP)	IEC 62321-8:2017 Ed.1.0	GC-MS	50 mg/kg	1000 mg/kg
Benzyl butyl Phthalate (BBP)	IEC 62321-8:2017 Ed.1.0	GC-MS	50 mg/kg	1000 mg/kg
Dibutyl Phthalate (DBP)	IEC 62321-8:2017 Ed.1.0	GC-MS	50 mg/kg	1000 mg/kg
Diisobutyl Phthalate(DIBP)	IEC 62321-8:2017 Ed.1.0	GC-MS	50 mg/kg	1000 mg/kg

**Test Flow:**

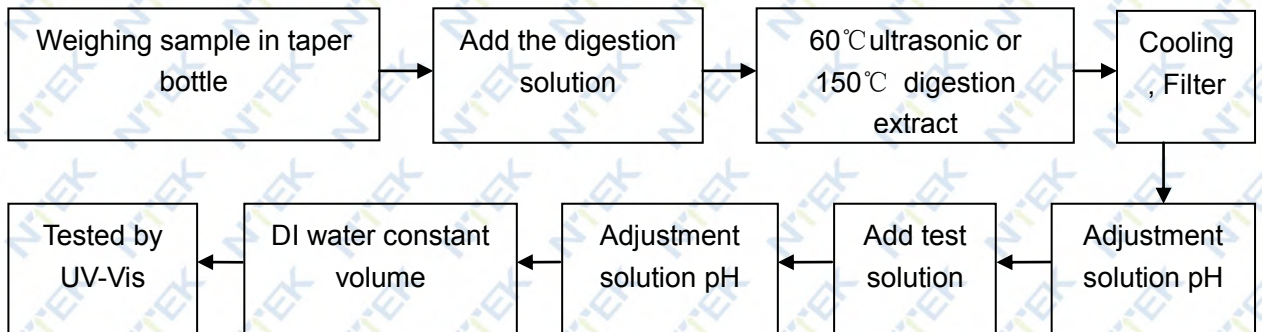
Tested by: Mike/ BettyWu

1. Lead(Pb), Cadmium(Cd) , Mercury (Hg)

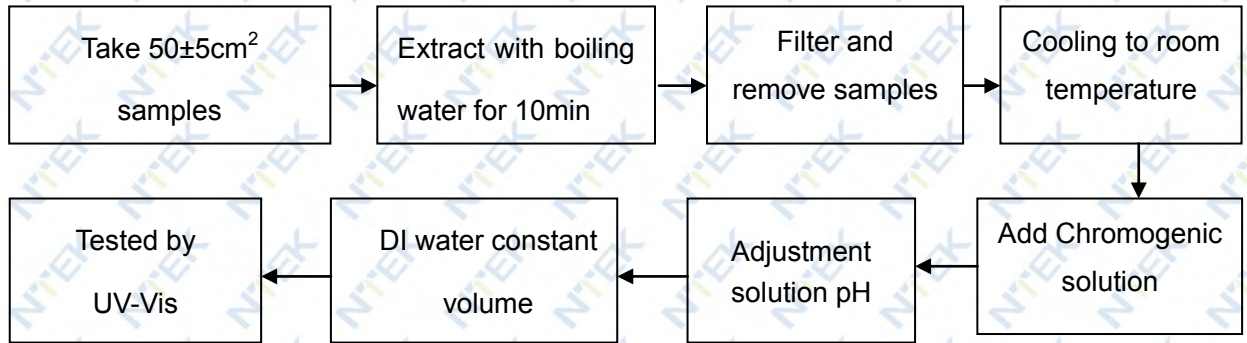


2. Hexavalent Chromium(Cr(VI))

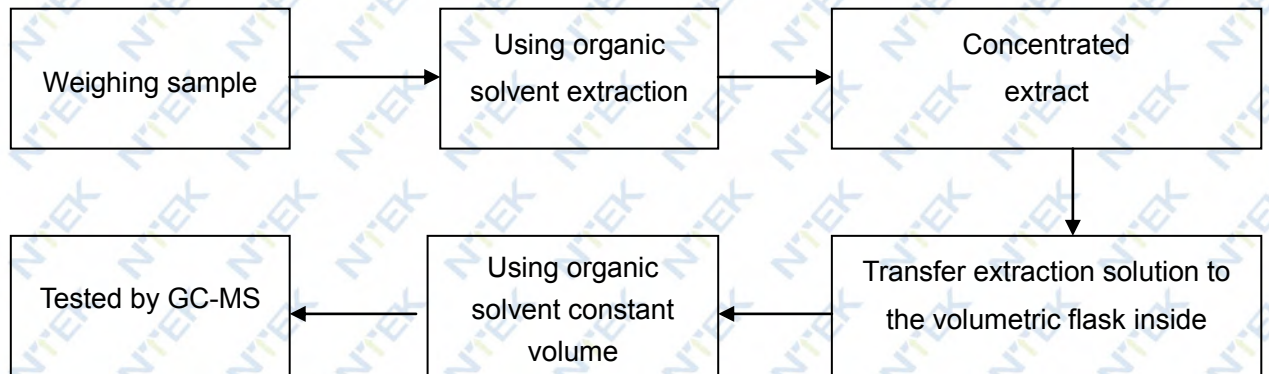
2.1 Non- metal sample(s)



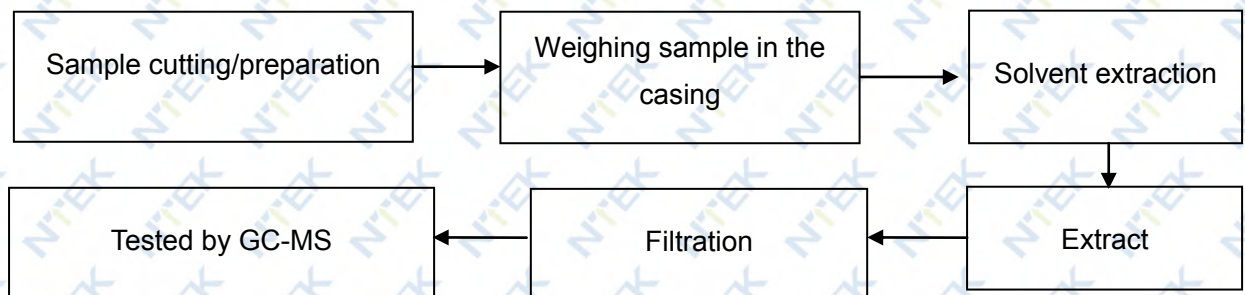
2.2 Metal sample(s)



3. PBBs/ PBDEs



4. Phthalates



Sample photo(s):



Fig.1



Fig.2



Fig.3



Fig.4



Fig.5



Fig.6





Fig.7



Fig.8



Fig.9



Fig.10



Fig.11



Fig.12



Fig.13



Fig.14

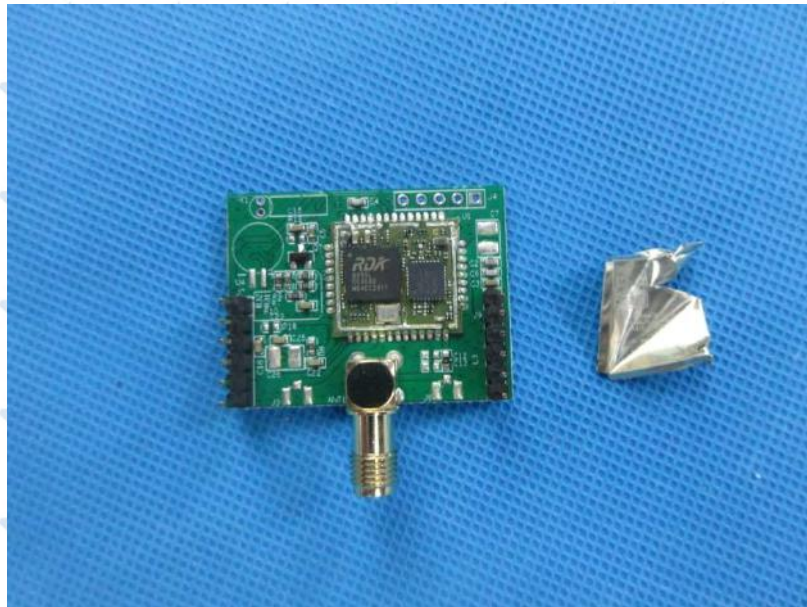


Fig.15

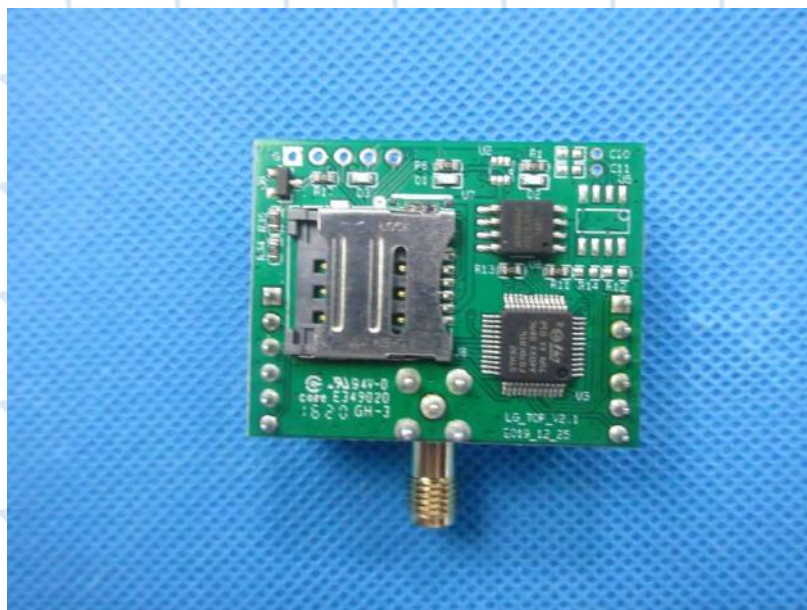


Fig.16



Fig.17



Fig.18

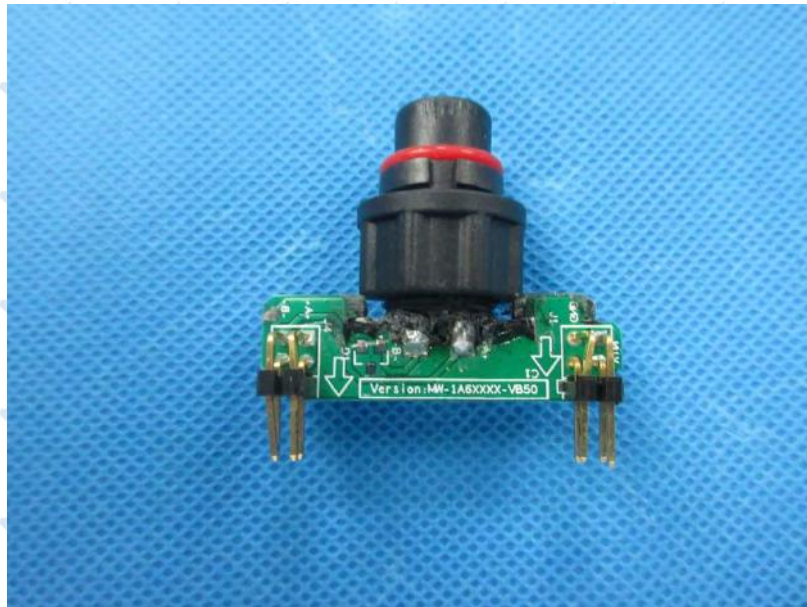


Fig.19

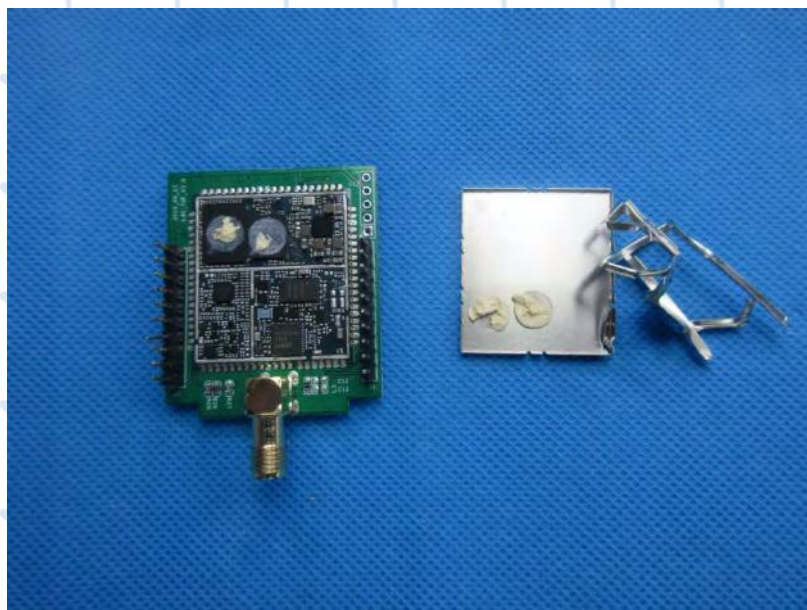


Fig.20



Fig.21



Fig.22





Fig.23



Fig.24



Fig.25



Fig.26



Fig.27



Fig.28



Fig.29



Fig.30



Fig.31

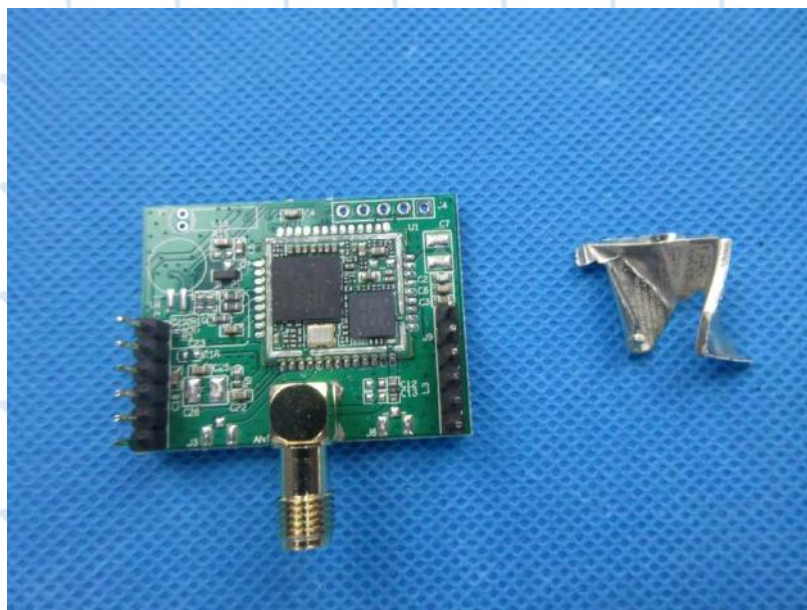


Fig.32



Fig.33

\*\*\*\*End of Report\*\*\*\*

The test report is effective only with both signature and specialized stamp, The result(s) shown in this report refer only to the sample(s) tested. Without written approval of NTEK, this report can't be reproduced except in full.