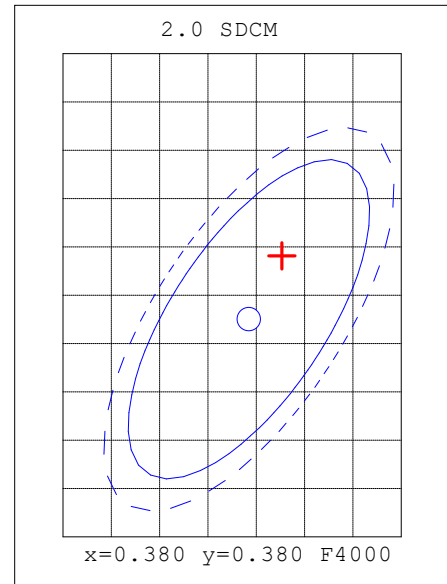
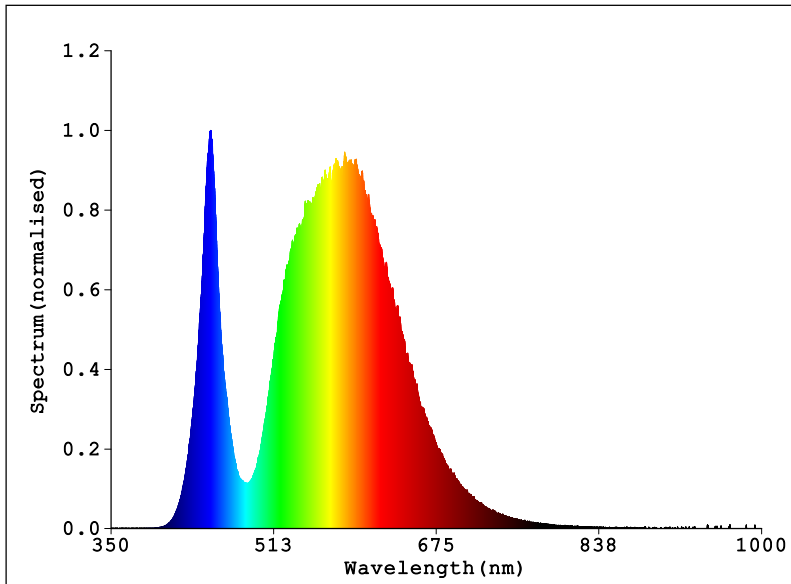


Spectrum Test Report

NAME: LED HIGHBAY	TYPE: SKU-7808	WEIGHT:
DIM.:	SPEC.: CCT-4000K	SERIAL No.:
MFR.: V-TAC EUROPE LTD		



Color Parameters:

Chromaticity Coordinates: $x=0.3829$ $y=0.3852$ $u'=0.2234$ $v'=0.5056$ $duv=0.00320$

Tc=3995K Dominant WL:Ld=577.5nm Purity=30.5%

Ratio:R=16.6% G=81.2% B=2.2% Peak WL:Lp=449.5nm HWL:21.5nm

Rendering Index:Ra=71.3 TLCI = 44

R1 =69 R2 =77 R3 =83 R4 =71 R5 =67 R6 =67 R7 =82

R8 =54 R9 =-28 R10=45 R11=65 R12=37 R13=70 R14=90 R15=63

E = 63.82 lx Ee = 0.1834 W/m²

Status: T=95.00ms Ip=52222 (80%) [HAAS-2000A(CAN)]

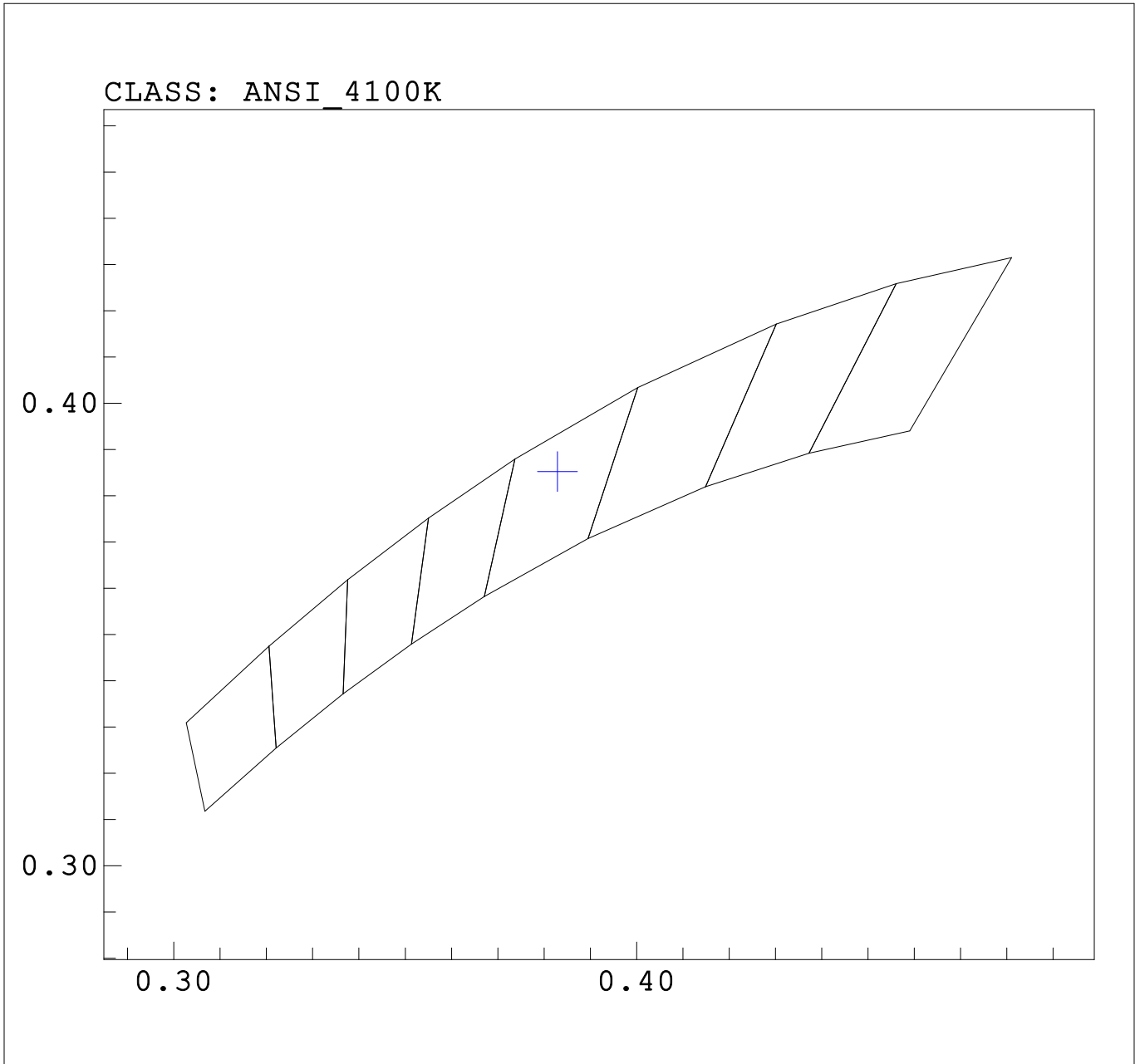
Tester:ILIEV
 Temperature:25.3Deg
 Manufactory:V-TAC EUROPE LTD

Date:
 Humidity:65.0%
 Remarks:PF-8.476%PST-0.108SVM-0.330EC=E

System:HAAS-2000A (CAN)

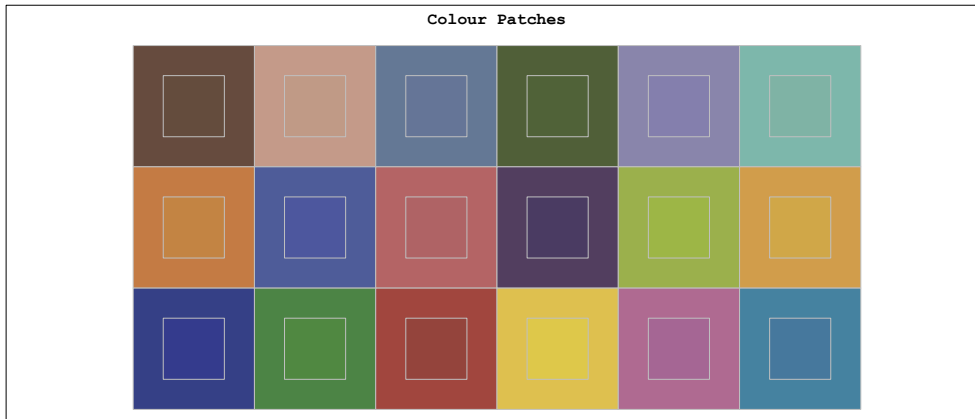
Standard: ANSIC78-377_White_2011.WCL

CIE x,y: x = 0.3829 , y = 0.3852



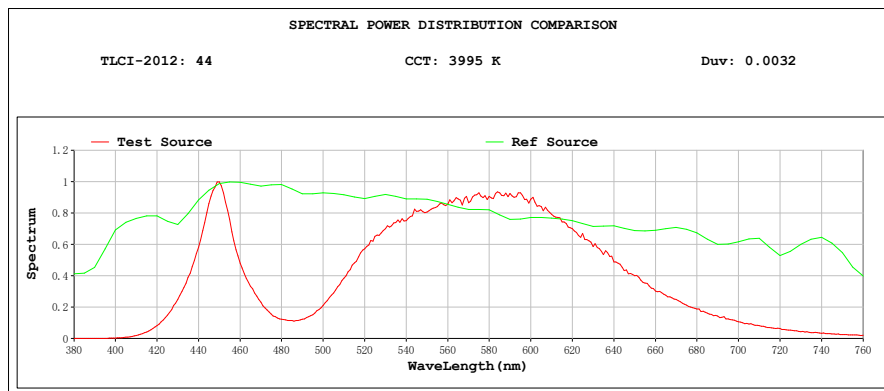
Tester:ILIEV
Temperature:25.3Deg
Manufactory:V-TAC EUROPE LTD
System:HAAS-2000A (CAN)

Date:
Humidity:65.0%
Remarks:PF-8.476%PST-0.108SVM-0.330EC=E



Colourist's Advice Report

Sector	Lightness	Chroma	Hue
R	---	--	-
R/Y	+	-	++++
Y	+++	++	+++++
Y/G	++	++	+
G	++	++	--
G/C	---	-	---
C	----	0	+++
C/B	-----	+	+++++
B	--	+++	++++
B/M	---	++	--
M	----	++	----
M/R	----	+	----



Tester: ILIEV
 Temperature: 25.3 Deg
 Manufactory: V-TAC EUROPE LTD
 System: HAAS-2000A (CAN)

Date:
 Humidity: 65.0%
 Remarks: PF-8.476% PST-0.108 SVM-0.330 EC=E