



CE LVD TEST REPORT

For
LED TRACK LIGHT

Model No.: VT-4635, VT-4615, VT-4537, VT-4528, VT-4512

Applicant : V-TAC EXPORTS LIMITED
ROOM NO.301, KAM ON BUILDING 176A QUEENS ROAD
CENTRAL, CENTRAL, HONGKONG

Manufacturer : V-TAC EXPORTS LIMITED
ROOM NO.301, KAM ON BUILDING 176A QUEENS ROAD
CENTRAL, CENTRAL, HONGKONG

Issued By : Global-Standard Testing Service Co., Ltd.
Room 1911, 1914, Noble Plaza, Qian Jin 1st Road,
Bao An District, Shenzhen, Guangdong, China.

Tel : +86 755 33863599

Email : market@gstslab.com

Report Number : D00.06.0449S

Issued Date : D00.06.0449S

Date of Report : D00.06.0449S

Note:

1. The test data and result is based on the tested sample only.
2. Please verify information in the report on GST web: www.gstslab.com through report number.
3. All rights reserve, the pirate edition investigates necessarily! This report shall not be reproduced unless under the authority of Global-Standard Testing Service Co., Ltd

LVD Report EN60598-1&EN60598-2-1 Luminaires—Part 1 :General requirements and tests Part 2-1:Particular requirements Section One – Fixed general purpose luminaires	
Report reference No.:	D00.06.0449S
Testing laboratory	Global-Standard Testing Service Co., Ltd.
Location.....:	Room 1911-1914, Noble Plaza, Qian Jin 1st Road, Bao An district, Shenzhen, Guangdong, China.
Applicant.....:	V-TAC EXPORTS LIMITED
Address:.....:	ROOM NO.301, KAM ON BUILDING 176A QUEENS ROAD CENTRAL, CENTRAL, HONGKONG
Manufacturer :.....:	V-TAC EXPORTS LIMITED
Address.....:	ROOM NO.301, KAM ON BUILDING 176A QUEENS ROAD CENTRAL, CENTRAL, HONGKONG
Standards.....:	EN 60598-2-1: 1989 EN 60598-1: 2015 EN 61347-1: 2015 EN 61347-2-13: 2014 EN 62031: 2008+A2:2015 EN 62471: 2008 EN 62493: 2015
Procedure deviation.....:	N/A
Non-standard test method.....:	N/A
Type of test equipment	LED TRACK LIGHT
Trade mark.....:	
Model/Type designation.....:	VT-4635, VT-4615, VT-4537, VT-4528, VT-4512
Rating.....:	AC220-240V, 50/60Hz, Max.35W
TRF originator.....:	Global-Standard Testing Service Co., Ltd.
Copyright blank test report.....:	Global-Standard Testing Service Co., Ltd.
Test item particulars.....:	--
Operating Condition.....:	Continuous
Tested for IT power systems.....:	No
IT testing, phase-phase voltage (V)....:	N/A.
Class of equipment.....:	Class I equipment and Fixed equipment
Protection against ingress of water.....:	IP20

Possible test case verdicts :

test case does not apply to the test object	N(/A.)
test object does meet the requirement	P(ass)
test object does not meet the requirement	F(ail)

Name and address of the testing laboratory :

Global-Standard Testing Service Co., Ltd.
Room 1911-1914, Noble Plaza, Qian Jin 1st Road, Bao An District, Shenzhen, Guangdong, China.

Tested by : Sean Xiao December 23, 2016
Signature Date


Sean Xiao / Test Engineer
Name/title

Reviewed by : Jerry Hu December 28, 2016
Signature Date

Jerry Hu / Project Engineer
Name/title

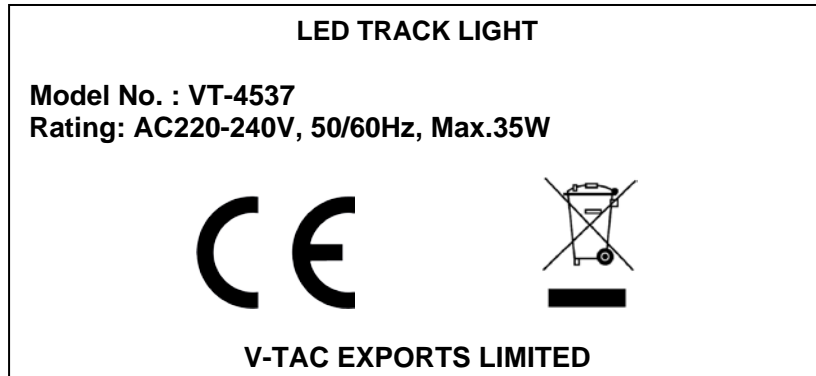
Approved by : Tim Sun December 28, 2016
Signature Date

Tim Sun / Manager
Name/title



General remarks:	
<p>Clause number between brackets refer to clauses in IEC 60598-1</p> <p>"(see remark #)" refers to a remark appended to the report.</p> <p>"(see appended table)" refers to a table appended to the report.</p> <p>Throughout this report a comma is used as the decimal separator.</p> <p>The test results presented in this report relate only to the object tested.</p> <p>This report shall not be reproduced except in full without the written approval of the testing laboratory.</p> <p>Unless otherwise specified, test are made under normal conditions at an ambient temperature within the range of 15°C to 35°C, RH45% to 75% and an air pressure of 860mbar of 1060mbar</p>	<p>Attachment with:</p> <p>1) Photo documentation</p>
<p>The test results presented in this report relate only to the object tested. This report shall not be reproduced, except in full, without the written approval of the Issuing testing laboratory.</p> <p>This report covers model VT-4635, VT-4615, VT-4537, VT-4528, VT-4512.</p> <p>LED TRACK LIGHT with different power depended on lamp wattage and dimension of shade.</p> <p>All tests were performed by model VT-4537 to represent the other identical models.</p> <p>The Safety specifications of LED modules for general lighting was evaluated with reference to EN 62031</p> <p>Fixed Luminaires were supplied by SELV equipment controlgear isolated electrical control gear, between live parts of control gear and lamp enclosure was separated by double or reinforce insulation SELV equipment controlgear are approved by CE</p> <p>The European standard IEC 62493 for requirement has considered.</p> <p>The European standard IEC 62471 for LED laser product requirement has considered.</p>	

Label



Note: Due to similarity of the labels, only above label was listed.

- The above copy of marking plate as an example, All the other models will have the same marking plate except the model name and input rating only and other parameter

-The above markings are the minimum requirements required by the safety standard. For the final productions samples, the additional markings which do not give rise to misunderstanding may be added.

- the height of WEEE directive mark is at least 7mm height.

IEC 60598-2-1

Clause	Requirement + Test	Result - Remark	Verdict
1.2 (0)	GENERAL TEST REQUIREMENTS		—
1.2 (0.1)	Information for luminaire design considered..... :	Standard EN60432 Yes <input checked="" type="checkbox"/> No <input type="checkbox"/>	—
1.2 (0.3)	More sections applicable..... :	Yes <input type="checkbox"/> No <input checked="" type="checkbox"/>	—

1.4 (2)	CLASSIFICATION		—
1.4 (2.2)	Type of protection	Class I	—
1.4 (2.3)	Degree of protection	IP20	—
1.4 (2.4)	Luminaire suitable for direct mounting on normally flammable surfaces..... :	Yes <input checked="" type="checkbox"/> No <input type="checkbox"/>	—
1.4 (2.5)	Luminaire for normal use	Yes <input checked="" type="checkbox"/> No <input type="checkbox"/>	—
	Luminaire for rough service	Yes <input type="checkbox"/> No <input checked="" type="checkbox"/>	—

1.5 (3)	MARKING		P
1.5 (3.2)	Mandatory markings		P
	Position of the marking		P
	Format of symbols/text		P
1.5 (3.3)	Additional information		P
	Language of instructions	English	P
1.5 (3.3.1)	Combination luminaires		N/A
1.5 (3.3.2)	Nominal frequency in Hz	50/60	P
1.5 (3.3.3)	Operating temperature		N/A
1.5 (3.3.4)	Symbol or warning notice		N/A
1.5 (3.3.5)	Wiring diagram		N/A
1.5 (3.3.6)	Special conditions		N/A
1.5 (3.3.7)	Metal halide lamp luminaire – warning		N/A
1.5 (3.3.8)	Limitation for semi-luminaires		N/A
1.5 (3.3.9)	Power factor and supply current		N/A
1.5 (3.3.10)	Suitability for use indoors		N/A
1.5 (3.3.11)	Luminaires with remote control		N/A
1.5 (3.3.12)	Clip-mounted luminaire – warning		N/A
1.5 (3.3.13)	Specifications of protective shields		N/A
1.5 (3.3.14)	Symbol for nature of supply	AC	P

IEC 60598-2-1

Clause	Requirement + Test	Result - Remark	Verdict
1.5 (3.3.15)	Rated current of socket outlet		N/A
1.5 (3.3.16)	Rough service luminaire		N/A
1.5 (3.3.17)	Mounting instruction for type Y, type Z and some type X attachments		P
1.5 (3.3.18)	Non-ordinary luminaires with PVC cable		N/A
1.5 (3.3.19)	Protective conductor current in instruction if applicable		N/A
1.5 (3.3.20)	Provided with information if not intended to be mounted within arm's reach		N/A
1.5 (3.3.21)	Non-replaceable and non-user replaceable light sources information provided		N/A
	Cautionary symbol		N/A
1.5 (3.3.22)	Controllable luminaires, classification of insulation provided		N/A
1.5 (3.4)	Test with water		P
	Test with hexane		P
	Legible after test		P
	Label attached		P

1.6 (4)	CONSTRUCTION		P
1.6 (4.2)	Components replaceable without difficulty		N/A
1.6 (4.3)	Wireways smooth and free from sharp edges		P
1.6 (4.4)	Lampholders		N/A
1.6 (4.4.1)	Integral lampholder		N/A
1.6 (4.4.2)	Wiring connection		N/A
1.6 (4.4.3)	Lampholder for end-to-end mounting		N/A
1.6 (4.4.4)	Positioning		N/A
	- pressure test (N)		—
	After test the lampholder comply with relevant standard sheets and show no damage		N/A
	After test on single-capped lampholder the lampholder have not moved from its position and show no permanent deformation		N/A
	- bending test (N)		—
	After test the lampholder have not moved from its position and show no permanent deformation		N/A

IEC 60598-2-1			
Clause	Requirement + Test	Result - Remark	Verdict
1.6 (4.4.5)	Peak pulse voltage		N/A
1.6 (4.4.6)	Centre contact		N/A
1.6 (4.4.7)	Parts in rough service luminaires resistant to tracking		N/A
1.6 (4.4.8)	Lamp connectors		N/A
1.6 (4.4.9)	Caps and bases correctly used		N/A
1.6 (4.4.10)	Light source for lampholder or connection according IEC 60061 not connected another way		N/A
1.6 (4.5)	Starter holders		N/A
	Starter holder in luminaires other than class II		N/A
	Starter holder class II construction		N/A
1.6 (4.6)	Terminal blocks		N/A
	Tails		N/A
	Unsecured blocks		N/A
1.6 (4.7)	Terminals and supply connections		P
1.6 (4.7.1)	Contact to metal parts		P
1.6 (4.7.2)	Test 8 mm live conductor		N/A
	Test 8 mm earth conductor		N/A
1.6 (4.7.3)	Terminals for supply conductors		P
1.6 (4.7.3.1)	Welded method and material		N/A
	- stranded or solid conductor		N/A
	- spot welding		N/A
	- welding between wires		N/A
	- Type Z attachment		N/A
	- mechanical test according to 15.8.2		N/A
	- electrical test according to 15.9		N/A
	- heat test according to 15.9.2.3 and 15.9.2.4		N/A
1.6 (4.7.4)	Terminals other than supply connection		P
1.6 (4.7.5)	Heat-resistant wiring/sleeves		N/A
1.6 (4.7.6)	Multi-pole plug		N/A
	- test at 30 N		N/A
1.6 (4.8)	Switches		N/A
	- adequate rating		N/A
	- adequate fixing		N/A
	- polarized supply		N/A

IEC 60598-2-1			
Clause	Requirement + Test	Result - Remark	Verdict
	- compliance with IEC 61058-1 for electronic switches		N/A
1.6 (4.9)	Insulating lining and sleeves		P
1.6 (4.9.1)	Retention		P
	Method of fixing..... :		—
1.6 (4.9.2)	Insulated linings and sleeves:		P
	Resistant to a temperature > 20 °C to the wire temperature or		N/A
	a) & c) Insulation resistance and electric strength		P
	b) Ageing test. Temperature (°C)..... :		N/A
1.6 (4.10)	Double or reinforced insulation		P
1.6 (4.10.1)	No contact, mounting surface – accessible metal parts – wiring of basic insulation		P
	Safe installation fixed luminaires		P
	Capacitors and switches		N/A
	Interference suppression capacitors according to IEC 60384-14		N/A
1.6 (4.10.2)	Assembly gaps:		P
	- not coincidental		P
	- no straight access with test probe		P
1.6 (4.10.3)	Retention of insulation:		P
	- fixed		P
	- unable to be replaced; luminaire inoperative		P
	- sleeves retained in position		P
	- lining in lampholder		N/A
1.6 (4.11)	Electrical connections and current-carrying parts		P
1.6 (4.11.1)	Contact pressure		P
1.6 (4.11.2)	Screws:		P
	- self-tapping screws		P
	- thread-cutting screws		N/A
1.6 (4.11.3)	Screw locking:		N/A
	- spring washer		N/A
	- rivets		N/A
1.6 (4.11.4)	Material of current-carrying parts		P
1.6 (4.11.5)	No contact to wood or mounting surface		P

IEC 60598-2-1			
Clause	Requirement + Test	Result - Remark	Verdict
1.6 (4.11.6)	Electro-mechanical contact systems		N/A
1.6 (4.12)	Screws and connections (mechanical) and glands		P
1.6 (4.12.1)	Screws not made of soft metal		P
	Screws of insulating material		P
	Torque test: torque (Nm); part :		P
	Torque test: torque (Nm); part :		N/A
	Torque test: torque (Nm); part :		N/A
1.6 (4.12.2)	Screws with diameter < 3 mm screwed into metal		N/A
1.6 (4.12.4)	Locked connections:		N/A
	- fixed arms; torque (Nm) :		N/A
	- lampholder; torque (Nm)..... :		N/A
	- push-button switches; torque 0,8 Nm :		N/A
1.6 (4.12.5)	Screwed glands; force (Nm) :		N/A
1.6 (4.13)	Mechanical strength		P
1.6 (4.13.1)	Impact tests:		P
	- fragile parts; energy (Nm) :		N/A
	- other parts; energy (Nm)..... :	Enclosure: 0.35Nm	P
	1) live parts		P
	2) linings		P
	3) protection		P
	4) covers		P
1.6 (4.13.3)	Straight test finger		P
1.6 (4.13.4)	Rough service luminaires		N/A
	- IP54 or higher		N/A
	a) fixed		N/A
	b) hand-held		N/A
	c) delivered with a stand		N/A
	d) for temporary installations and suitable for mounting on a stand		N/A
1.6 (4.13.6)	Tumbling barrel		N/A
1.6 (4.14)	Suspensions, fixings and means of adjusting		P
1.6 (4.14.1)	Mechanical load:		P
	A) four times the weight	Max.0.862Kg	P

IEC 60598-2-1			
Clause	Requirement + Test	Result - Remark	Verdict
	B) torque 2,5 Nm		P
	C) bracket arm; bending moment (Nm) :		N/A
	D) load track-mounted luminaires		N/A
	E) clip-mounted luminaires, glass-shelve. Thickness (mm) :		N/A
	Metal rod. diameter (mm) :		N/A
	Fixed luminaire or independent control gear without fixing devices		N/A
1.6 (4.14.2)	Load to flexible cables		N/A
	Mass (kg) :		—
	Stress in conductors (N/mm ²) :		N/A
	Mass (kg) of semi-luminaire :		—
	Bending moment (Nm) of semi-luminaire :		N/A
1.6 (4.14.3)	Adjusting devices:		N/A
	- flexing test; number of cycles :		N/A
	- strands broken :		N/A
	- electric strength test afterwards		N/A
1.6 (4.14.4)	Telescopic tubes: cords not fixed to tube; no strain on conductors		P
1.6 (4.14.5)	Guide pulleys		N/A
1.6 (4.14.6)	Strain on socket-outlets		N/A
1.6 (4.15)	Flammable materials		N/A
	- glow-wire test 650°C..... :		N/A
	- spacing ≥30 mm		N/A
	- screen withstanding test of 13.3.1		N/A
	- screen dimensions		N/A
	- no fiercely burning material		N/A
	- thermal protection		N/A
	- electronic circuits exempted		N/A
1.6 (4.15.2)	Luminaires made of thermoplastic material with lamp control gear		N/A
	a) construction		N/A
	b) temperature sensing control		N/A
	c) surface temperature		N/A
1.6 (4.16)	Luminaires for mounting on normally flammable surfaces		P

IEC 60598-2-1			
Clause	Requirement + Test	Result - Remark	Verdict
	No lamp control gear..... :	(compliance with Section 12)	P
1.6 (4.16.1)	Lamp control gear spacing:		N/A
	- spacing 35 mm		N/A
	- spacing 10 mm		N/A
1.6 (4.16.2)	Thermal protection:		N/A
	- in lamp control gear		N/A
	- external		N/A
	- fixed position		N/A
	- temperature marked lamp control gear		N/A
1.6 (4.16.3)	Design to satisfy the test of 12.6	(see clause 12.6)	N/A
1.6 (4.17)	Drain holes		N/A
	Clearance at least 5 mm		N/A
1.6 (4.18)	Resistance to corrosion		P
1.6 (4.18.1)	- rust-resistance		P
1.6 (4.18.2)	- season cracking in copper		N/A
1.6 (4.18.3)	- corrosion of aluminium		N/A
1.6 (4.19)	Igniters compatible with ballast		N/A
1.6 (4.20)	Rough service vibration		N/A
1.6 (4.21)	Protective shield		N/A
1.6 (4.21.1)	Shield fitted if tungsten halogen lamps or metal halide lamps		N/A
	Shield of glass if tungsten halogen lamps		N/A
1.6 (4.21.2)	Particles from a shattering lamp not impair safety		N/A
1.6 (4.21.3)	No direct path		N/A
1.6 (4.21.4)	Impact test on shield		N/A
	Glow-wire test on lamp compartment :	See Test Table 1.15 (13.3.2)	N/A
1.6 (4.22)	Attachments to lamps not cause overheating or damage		N/A
1.6 (4.23)	Semi-luminaires comply Class II		N/A
1.6 (4.24)	Photobiological hazards		N/A
1.6 (4.24.1)	No excessive UV radiation if tungsten halogen lamps and metal halide lamps (Annex P)		N/A
1.6 (4.24.2)	Retinal blue light hazard		N/A
	Luminaires with E_{thr} :		N/A

IEC 60598-2-1			
Clause	Requirement + Test	Result - Remark	Verdict
	a) Fixed luminaires		N/A
	- distance x m, borderline between RG1 and RG2.. :		N/A
	- marking and instruction according 3.2.23		N/A
	b) Portable and handheld luminaires		N/A
	- marking according 3.2.23 if RG1 exceeded at 200 mm according to IEC/TR 62778		N/A
	Portable luminaires for children IEC 60598-2-10 and Mains socket outlet nightlights IEC 60598-2-12 not exceed RG1 at 200 mm according to IEC/62778		N/A
1.6 (4.25)	Mechanical hazard		P
	No sharp point or edges		P
1.6 (4.26)	Short-circuit protection		N/A
1.6 (4.26.1)	Adequate means of uninsulated accessible SELV parts		N/A
1.6 (4.26.2)	Short-circuit test with test chain according 4.26.3		N/A
	Test chain not melt through		N/A
	Test sample not exceed values of Table 12.1 and 12.2		N/A
1.6 (4.27)	Terminal blocks with integrated screwless earthing contacts		P
	Test according Annex V		N/A
	Pull test of terminal fixing (20 N)		P
	After test, resistance < 0,05 Ω		P
	Pull test of mechanical connection (50 N)		N/A
	After test, resistance < 0,05 Ω		N/A
	Voltage drop test, resistance < 0,05 Ω		P
1.6 (4.28)	Fixing of thermal sensing control		N/A
	Not plug-in or easily replaceable type		N/A
	Reliably kept in position		N/A
	No adhesive fixing if UV radiations from a lamp can degrade the fixing		N/A
	Not outside the luminaire enclosure		N/A
	Test of adhesive fixing:		N/A
	Max. temperature on adhesive material (°C)..... :		—
	100 cycles between t min and t max		N/A
	Temperature sensing control still in position		N/A

IEC 60598-2-1			
Clause	Requirement + Test	Result - Remark	Verdict
1.6 (4.29)	Luminaires with non-replaceable light source		P
	Not possible to replace light source		P
	Live part not accessible after parts have been opened by hand or tools		P
1.6 (4.30)	Luminaires with non-user replaceable light source		N/A
	If protective cover provide protection against electric shock and marked with "caution, electric shock risk" symbol:		N/A
	Minimum two fixing means		N/A
1.6 (4.31)	Insulation between circuits		P
	Circuits insulated from LV supply fulfil requirements according 4.31.1 – 4.31.3		P
	Controllable luminaires requiring same level of insulation for all components, the insulation between control terminals and LV supply fulfil requirements according 4.31.1 – 4.31.3		P
1.6 (4.31.1)	SELV circuits		P
	Used SELV source		P
	Voltage \leq ELV		P
	Insulating of SELV circuits from LV supply		N/A
	Insulating of SELV circuits from other non SELV circuits		N/A
	Insulating of SELV circuits from FELV		N/A
	Insulating of SELV circuits from other SELV circuits		N/A
	SELV circuits insulated from accessible parts according Table X.1		N/A
	Plugs not able to enter socket-outlets of other voltage systems		N/A
	Socket outlets does not admit plugs of other voltage systems		N/A
	Plugs and socket-outlets does not have protective conductor contact		N/A
1.6 (4.31.2)	FELV circuits		N/A
	Used FELV source		N/A
	Voltage \leq ELV		N/A
	Insulating of FELV circuits from LV supply		N/A
	FELV circuits insulated from accessible parts according Table X.1		N/A

IEC 60598-2-1

Clause	Requirement + Test	Result - Remark	Verdict
	Plugs not able to enter socket-outlets of other voltage systems		N/A
	Socket outlets does not admit plugs of other voltage systems		N/A
	Socket-outlets does not have protective conductor contact		N/A
1.6 (4.31.3)	Other circuits		N/A
	Other circuits insulated from accessible parts according Table X.1		N/A
	Class II construction with equipotential bonding for protection against indirect contacts with live parts:		N/A
	- conductive parts are connected together		N/A
	- test according 7.2.3 of above		N/A
	- conductive part not cause an electric shock in case of an insulation fault		N/A
	- equipotential bonding in master/slave applications		N/A
	- master luminaire provided with terminal for accessible conductive parts of slave luminaires		N/A
	- slave luminaire constructed as class I		N/A
1.6 (4.32)	Overvoltage protective devices		P
	Comply with IEC 61643-11		P
	External to control gear and connected to earth:		P
	- only in fixed luminaires		P
	- only connected to protective earth		P

1.7 (11)	CREEPAGE DISTANCES AND CLEARANCES		P
1.7 (11.2)	Creepage distances and clearances	See Table 1.7 (11.2)	P
	Working voltage (V)	220-240VAC	—
	Rated pulse voltage (kV).....		—
	Voltage form.....	Sinusoidal <input checked="" type="checkbox"/> Non-sinusoidal <input type="checkbox"/>	—
	PTI.....	< 600 <input checked="" type="checkbox"/> ≥ 600 <input type="checkbox"/>	—
	Impulse withstand category (Normal category II) (Category III Annex U)	Category II <input checked="" type="checkbox"/> Category III <input type="checkbox"/>	—

IEC 60598-2-1			
Clause	Requirement + Test	Result - Remark	Verdict
1.8 (7)	PROVISION FOR EARTHING		P
1.8 (7.2.1 + 7.2.3)	Accessible metal parts		P
	Metal parts in contact with supporting surface		P
	Resistance < 0,5 Ω		P
	Self-tapping screws used		N/A
	Thread-forming screws		P
	Thread-forming screw used in a groove		N/A
	Earth makes contact first		N/A
	Terminal blocks with integrated screwless earthing contacts tested according Annex V		N/A
	Protective earthing of the luminaire not via built-in control gear		N/A
1.8 (7.2.2 + 7.2.3)	Earth continuity in joints, etc.		N/A
1.8 (7.2.4)	Locking of clamping means		N/A
	Compliance with 4.7.3		N/A
	Terminal blocks with integrated screwless earthing contacts tested according Annex V		N/A
1.8 (7.2.5)	Earth terminal integral part of connector socket		N/A
1.8 (7.2.6)	Earth terminal adjacent to mains terminals		N/A
1.8 (7.2.7)	Electrolytic corrosion of the earth terminal		P
1.8 (7.2.8)	Material of earth terminal		P
	Contact surface bare metal		P
1.8 (7.2.10)	Class II luminaire for looping-in		N/A
	Double or reinforced insulation to functional earth		N/A
1.8 (7.2.11)	Earthing core coloured green-yellow		P
	Length of earth conductor		P

1.9 (14)	SCREW TERMINALS		N/A
	Separately approved; component list	(see Annex 1)	N/A
	Part of the luminaire	(see Annex 3)	N/A

1.9 (15)	SCREWLESS TERMINALS AND ELECTRICAL CONNECTIONS		N/A
	Separately approved; component list	(see Annex 1)	N/A

IEC 60598-2-1			
Clause	Requirement + Test	Result - Remark	Verdict
	Part of the luminaire..... :	(see Annex 4)	N/A
1.10 (5)	EXTERNAL AND INTERNAL WIRING		P
1.10 (5.2)	Supply connection and external wiring		P
1.10 (5.2.1)	Means of connection..... :		p
	Outdoor luminaire has not PVC insulated external wiring if not class III or SELV ≤ 25 V a.c./60 V d.c. or protected from outdoor environment		N/A
1.10 (5.2.2)	Type of cable..... :	18AWG	P
	Nominal cross-sectional area (mm ²)..... :	2 X 0.75	P
	Cables equal to IEC 60227 or IEC 60245		N/A
1.10 (5.2.3)	Type of attachment, X, Y or Z		P
1.10 (5.2.5)	Type Z not connected to screws		N/A
1.10 (5.2.6)	Cable entries:		N/A
	- suitable for introduction		N/A
	- adequate degree of protection		N/A
1.10 (5.2.7)	Cable entries through rigid material have rounded edges		N/A
1.10 (5.2.8)	Insulating bushings:		N/A
	- suitably fixed		N/A
	- material in bushings		N/A
	- material not likely to deteriorate		N/A
	- tubes or guards made of insulating material		N/A
1.10 (5.2.9)	Locking of screwed bushings		N/A
1.10 (5.2.10)	Cord anchorage:		N/A
	- covering protected from abrasion		N/A
	- clear how to be effective		N/A
	- no mechanical or thermal stress		N/A
	- no tying of cables into knots etc.		N/A
	- insulating material or lining		N/A
1.10 (5.2.10.1)	Cord anchorage for type X attachment:		N/A
	a) at least one part fixed		N/A
	b) types of cable		N/A

IEC 60598-2-1			
Clause	Requirement + Test	Result - Remark	Verdict
	c) no damaging of the cable		N/A
	d) whole cable can be mounted		N/A
	e) no touching of clamping screws		N/A
	f) metal screw not directly on cable		N/A
	g) replacement without special tool		N/A
	Glands not used as anchorage		N/A
	Labyrinth type anchorages		N/A
1.10 (5.2.10.2)	Adequate cord anchorage for type Y and type Z attachment		N/A
1.10 (5.2.10.3)	Tests:		N/A
	- impossible to push cable; unsafe		N/A
	- pull test: 25 times; pull (N)		N/A
	- torque test: torque (Nm).....		N/A
	- displacement \leq 2 mm		N/A
	- no movement of conductors		N/A
	- no damage of cable or cord		N/A
	- function independent of electrical connection		N/A
1.10 (5.2.11)	External wiring passing into luminaire		N/A
1.10 (5.2.12)	Looping-in terminals		N/A
1.10 (5.2.13)	Wire ends not tinned		N/A
	Wire ends tinned: no cold flow		P
1.10 (5.2.14)	Mains plug same protection		N/A
	Class III luminaire plug		N/A
	No unsafe compatibility		N/A
1.10 (5.2.16)	Appliance inlets (IEC 60320)		N/A
	Installation couplers (IEC 61535)		N/A
	Other appliance inlet or connector according relevant IEC standard		N/A
1.10 (5.2.17)	No standardized interconnecting cables properly assembled		N/A

IEC 60598-2-1			
Clause	Requirement + Test	Result - Remark	Verdict
1.10 (5.2.18)	Used plug in accordance with		N/A
	- IEC 60083		N/A
	- other standard		N/A
1.10 (5.3)	Internal wiring		P
1.10 (5.3.1)	Internal wiring of suitable size and type	22AWG	P
	Through wiring		P
	- not delivered/ mounting instruction		P
	- factory assembled		P
	- socket outlet loaded (A) :		P
	- temperatures..... :	(see Annex 2)	P
	Green-yellow for earth only		N/A
1.10 (5.3.1.1)	Internal wiring connected directly to fixed wiring		P
	Cross-sectional area (mm ²) :		P
	Insulation thickness		P
	Extra insulation added where necessary		P
1.10 (5.3.1.2)	Internal wiring connected to fixed wiring via internal current-limiting device		N/A
	Adequate cross-sectional area and insulation thickness		N/A
1.10 (5.3.1.3)	Double or reinforced insulation for class II		N/A
1.10 (5.3.1.4)	Conductors without insulation		P
1.10 (5.3.1.5)	SELV current-carrying parts		P
1.10 (5.3.1.6)	Insulation thickness other than PVC or rubber		P
1.10 (5.3.2)	Sharp edges etc.		P
	No moving parts of switches etc.		P
	Joints, raising/lowering devices		N/A
	Telescopic tubes etc.		N/A
	No twisting over 360°		N/A
1.10 (5.3.3)	Insulating bushings:		P
	- suitable fixed		P

IEC 60598-2-1			
Clause	Requirement + Test	Result - Remark	Verdict
	- material in bushings		P
	- material not likely to deteriorate		P
	- cables with protective sheath		N/A
1.10 (5.3.4)	Joints and junctions effectively insulated		N/A
1.10 (5.3.5)	Strain on internal wiring		P
1.10 (5.3.6)	Wire carriers		P
1.10 (5.3.7)	Wire ends not tinned		N/A
	Wire ends tinned: no cold flow		N/A

1.11 (8)	PROTECTION AGAINST ELECTRIC SHOCK		P
1.11 (8.2.1)	Live parts not accessible		P
	Basic insulated parts not used on the outer surface without appropriate protection		N/A
	Basic insulated parts not accessible with standard test finger on portable, settable and adjustable luminaires		N/A
	Basic insulated parts not accessible with Ø 50 mm probe from outside, other types of luminaires		N/A
	Lamp and starterholders in portable and adjustable luminaires comply with double or reinforced insulation requirements		N/A
	Basic insulation only accessible under lamp or starter replacement		N/A
	Protection in any position		P
	Double-ended tungsten filament lamp		N/A
	Insulation lacquer not reliable		N/A
	Double-ended high pressure discharge lamp		N/A
	Relevant warning according to 3.2.18 fitted to the luminaire		N/A
1.11 (8.2.2)	Portable luminaire adjusted in most unfavourable position		N/A
1.11 (8.2.3.a)	Class II luminaire:		N/A
	- basic insulated metal parts not accessible during starter or lamp replacement		N/A
	- basic insulation not accessible other than during starter or lamp replacement		N/A

IEC 60598-2-1			
Clause	Requirement + Test	Result - Remark	Verdict
	- glass protective shields not used as supplementary insulation		N/A
1.11 (8.2.3.b)	BC lampholder of metal in class I luminaires shall be earthed		N/A
1.11 (8.2.3.c)	SELV circuits with exposed current carrying parts:		P
	Ordinary luminaire:		P
	- touch current	0.03mA	P
	- no-load voltage	52VDC	P
	Other than ordinary luminaire:		N/A
	- nominal voltage		N/A
1.11 (8.2.4)	Portable luminaire have protection independent of supporting surface		N/A
1.11 (8.2.5)	Compliance with the standard test finger or relevant probe		P
1.11 (8.2.6)	Covers reliably secured		P
1.11 (8.2.7)	Discharging of capacitors $\geq 0,5 \mu\text{F}$		P
	Portable plug connected luminaire with capacitor		N/A
	Other plug connected luminaire with capacitor		N/A
	Discharge device on or within capacitor		P
	Discharge device mounted separately		N/A
1.12 (12)	ENDURANCE TEST AND THERMAL TEST		P
1.12 (-)	If IP > IP 20 relevant test of (12.4), (12.5) and (12.6) after (9.2) before (9.3) specified in 4.13		—
1.12 (12.3)	Endurance test:		P
	- mounting-position	Normal position	—
	- test temperature (°C)	25°C	—
	- total duration (h).....	240h	—
	- supply voltage: Un factor; calculated voltage (V) ..	254.4VAC	—
	- lamp used	LED	—
1.12 (12.3.2)	After endurance test:		P
	- no part unserviceable		P
	- luminaire not unsafe		P

IEC 60598-2-1			
Clause	Requirement + Test	Result - Remark	Verdict
	- no damage to track system		N/A
	- marking legible		P
	- no cracks, deformation etc.		P
1.12 (12.4)	Thermal test (normal operation)	(see Annex 2)	N/A
1.12 (12.5)	Thermal test (abnormal operation)	(see Annex 2)	N/A
1.12 (12.6)	Thermal test (failed lamp control gear condition):		N/A
1.12 (12.6.1)	Through wiring or looping-in wiring loaded by a current of (A)		—
	- case of abnormal conditions		—
	- electronic lamp control gear		N/A
	- measured winding temperature (°C): at 1,1 Un		—
	- measured mounting surface temperature (°C) at 1,1 Un.....		N/A
	- calculated mounting surface temperature (°C)		N/A
	- track-mounted luminaires		N/A
1.12 (12.6.2)	Temperature sensing control		N/A
	- case of abnormal conditions		—
	- thermal link		N/A
	- manual reset cut-out		N/A
	- auto reset cut-out		N/A
	- measured mounting surface temperature (°C)		N/A
	- track-mounted luminaires		N/A
1.12 (12.7)	Thermal test (failed lamp control gear in plastic luminaires):		N/A
1.12 (12.7.1)	Luminaire without temperature sensing control		N/A
1.12 (12.7.1.1)	Luminaire with fluorescent lamp ≤ 70W		N/A
	Test method 12.7.1.1 or Annex W		—
	Test according to 12.7.1.1:		N/A
	- case of abnormal conditions		—
	- Ballast failure at supply voltage (V)		—
	- Components retained in place after the test		N/A
	- Test with standard test finger after the test		N/A
	Test according to Annex W:		N/A

IEC 60598-2-1			
Clause	Requirement + Test	Result - Remark	Verdict
	- case of abnormal conditions		—
	- measured winding temperature (°C): at 1,1 Un..... :		—
	- measured temperature of fixing point/exposed part (°C): at 1,1 Un		—
	- calculated temperature of fixing point/exposed part (°C)..... :		—
	Ball-pressure test	See Table 1.15 (13.2.1)	N/A
1.12 (12.7.1.2)	Luminaire with discharge lamp, fluorescent lamp > 70W, transformer > 10 VA		N/A
	- case of abnormal conditions		—
	- measured winding temperature (°C): at 1,1 Un..... :		—
	- measured temperature of fixing point/exposed part (°C): at 1,1 Un		—
	- calculated temperature of fixing point/exposed part (°C)..... :		—
	Ball-pressure test	See Table 1.15 (13.2.1)	N/A
1.12 (12.7.1.3)	Luminaire with short circuit proof transformers ≤ 10 VA		N/A
	- case of abnormal conditions		—
	- Components retained in place after the test		N/A
	- Test with standard test finger after the test		N/A
1.12 (12.7.2)	Luminaire with temperature sensing control		N/A
	- thermal link..... :	Yes <input type="checkbox"/> No <input type="checkbox"/>	—
	- manual reset cut-out	Yes <input type="checkbox"/> No <input type="checkbox"/>	—
	- auto reset cut-out..... :	Yes <input type="checkbox"/> No <input type="checkbox"/>	—
	- case of abnormal conditions		—
	- highest measured temperature of fixing point/exposed part (°C):..... :		—
	Ball-pressure test:	See Table 1.15 (13.2.1)	N/A
1.13 (9)	RESISTANCE TO DUST, SOLID OBJECTS AND MOISTURE		P
1.13 (-)	If IP > IP 20 the order of tests as specified in clause 1.12		P
1.13 (9.2)	Tests for ingress of dust, solid objects and moisture:		—
	- classification according to IP	IP20	—

IEC 60598-2-1

Clause	Requirement + Test	Result - Remark	Verdict
	- mounting position during test..... :	As in normal use	—
	- fixing screws tightened; torque (Nm) :	0.8Nm	—
	- tests according to clauses :		—
	- electric strength test afterwards		N/A
	a) no deposit in dust-proof luminaire		N/A
	b) no talcum in dust-tight luminaire		N/A
	c) no trace of water on current-carrying parts or on insulation where it could become a hazard		N/A
	d) i) For luminaires without drain holes – no water entry		N/A
	d) ii) For luminaires with drain holes – no hazardous water entry		N/A
	e) no water in watertight luminaire		N/A
	f) no contact with live parts (IP 2X)		P
	f) no entry into enclosure (IP 3X and IP 4X)		N/A
	f) no contact with live parts (IP3X and IP4X)		N/A
	g) no trace of water on part of lamp requiring protection from splashing water		N/A
	h) no damage of protective shield or glass envelope		N/A
1.13 (9.3)	Humidity test 48 h	25°C, 93% RH	P

1.14 (10)	INSULATION RESISTANCE AND ELECTRIC STRENGTH		P
1.14 (10.2.1)	Insulation resistance test		P
	Cable or cord covered by metal foil or replaced by a metal rod of mm Ø :		—
	Insulation resistance (MΩ) :		—
	SELV		N/A
	- between current-carrying parts of different polarity :		N/A
	- between current-carrying parts and mounting surface :		N/A
	- between current-carrying parts and metal parts of the luminaire..... :		N/A
	- between the outer surface of a flexible cord or cable where it is clamped in a cord anchorage and accessible metal parts :		N/A
	- Insulation bushings as described in Section 5 :		N/A

IEC 60598-2-1			
Clause	Requirement + Test	Result - Remark	Verdict
	Other than SELV		P
	- between live parts of different polarity	>100M	P
	- between live parts and mounting surface	>100M	P
	- between live parts and metal parts	>100M	P
	- between live parts of different polarity through action of a switch		N/A
	- between the outer surface of a flexible cord or cable where it is clamped in a cord anchorage and accessible metal parts		N/A
	- Insulation bushings as described in Section 5		P
1.14 (10.2.2)	Electric strength test		P
	Dummy lamp		N/A
	Luminaires with ignitors after 24 h test		N/A
	Luminaires with manual ignitors		N/A
	Test voltage (V).....		P
	SELV		N/A
	- between current-carrying parts of different polarity:		N/A
	- between current-carrying parts and mounting surface		N/A
	- between current-carrying parts and metal parts of the luminaire.....		N/A
	- between the outer surface of a flexible cord or cable where it is clamped in a cord anchorage and accessible metal parts		N/A
	- Insulation bushings as described in Section 5		N/A
	Other than SELV		P
	- between live parts of different polarity	3000V	P
	- between live parts and mounting surface	3000V	P
	- between live parts and metal parts	3000V	P
	- between live parts of different polarity through action of a switch		N/A
	- between the outer surface of a flexible cord or cable where it is clamped in a cord anchorage and accessible metal parts		N/A
	- Insulation bushings as described in Section 5		P
1.14 (10.3)	Touch current or protective conductor current (mA) :	0.03mA	P

IEC 60598-2-1

Clause	Requirement + Test	Result - Remark	Verdict
--------	--------------------	-----------------	---------

1.15 (13)	RESISTANCE TO HEAT, FIRE AND TRACKING		N/A
1.15 (13.2.1)	Ball-pressure test	See Test Table 1.15 (13.2.1)	N/A
1.15 (13.3.1)	Needle-flame test (10 s).....	See Test Table 1.15 (13.3.1)	N/A
1.15 (13.3.2)	Glow-wire test (650°C).....	See Test Table 1.15 (13.3.2)	N/A
1.15 (13.4)	Proof tracking test (IEC 60112)	See Test Table 1.15 (13.4)	N/A

IEC 60598-2-1

Clause	Requirement + Test	Result - Remark	Verdict
--------	--------------------	-----------------	---------

1.7 (11.2)	TABLES: Creepage distances and clearances		P
-------------------	--	--	---

Table 11.1	Minimum distances (mm) for a.c. (50/60 Hz) sinusoidal voltages		P
-------------------	---	--	---

RMS working voltage (V) not exceeding	50	150	250	500	750	1000
---------------------------------------	----	-----	-----	-----	-----	------

Creepage distances

Required basic insulation, PTI \geq 600	0,6	0,8	1,5	3	4	5,5
---	-----	-----	-----	---	---	-----

Measured	-	-	-	-	-	-
----------	---	---	---	---	---	---

Required basic insulation, PTI < 600	1,2	1,6	2,5	5	8	10
--------------------------------------	-----	-----	-----	---	---	----

Measured	-	-	3.2	-	-	-
----------	---	---	-----	---	---	---

Required supplementary insulation PTI \geq 600	-	0,8	1,5	3	4	5,5
--	---	-----	-----	---	---	-----

Measured	-	-	-	-	-	-
----------	---	---	---	---	---	---

Required supplementary insulation PTI < 600	-	1,6	2,5	5	8	10
---	---	-----	-----	---	---	----

Measured	-	-	-	-	-	-
----------	---	---	---	---	---	---

Required reinforced insulation	-	3,2	5	6	8	11
--------------------------------	---	-----	---	---	---	----

Measured	-	-	-	-	-	-
----------	---	---	---	---	---	---

Clearances

Required basic insulation	0,2	0,8	1,5	3	4	5,5
---------------------------	-----	-----	-----	---	---	-----

Measured	-	-	3.2	-	-	-
----------	---	---	-----	---	---	---

Required supplementary insulation	-	0,8	1,5	3	4	5,5
-----------------------------------	---	-----	-----	---	---	-----

Measured	-	-	-	-	-	-
----------	---	---	---	---	---	---

Required reinforced insulation	-	1,6	3	6	8	11
--------------------------------	---	-----	---	---	---	----

Measured	-	-	-	-	-	-
----------	---	---	---	---	---	---

Table 11.2	Minimum distances (mm) for non-sinusoidal pulse voltages						N/A
-------------------	---	--	--	--	--	--	-----

Rated pulse voltage (peak kV)	2,0	2,5	3,0	4,0	5,0	6,0	8,0
-------------------------------	-----	-----	-----	-----	-----	-----	-----

Required clearances	1,0	1,5	2	3	4	5,5	8
---------------------	-----	-----	---	---	---	-----	---

Measured							
----------	--	--	--	--	--	--	--

Rated pulse voltage (peak kV)	10	12	15	20	25	30	40
-------------------------------	----	----	----	----	----	----	----

Required clearances	11	14	18	25	33	40	60
---------------------	----	----	----	----	----	----	----

Measured							
----------	--	--	--	--	--	--	--

Rated pulse voltage (peak kV)	50	60	80	100	-	-	-
-------------------------------	----	----	----	-----	---	---	---

Required clearances	75	90	130	170	-	-	-
---------------------	----	----	-----	-----	---	---	---

Measured							
----------	--	--	--	--	--	--	--



IEC 60598-2-1			
Clause	Requirement + Test	Result - Remark	Verdict

1.15 (13.2.1)	TABLE: Ball Pressure Test of Thermoplastics			N/A
Allowed impression diameter (mm)				—
Object/ Part No./ Material	Manufacturer/ trademark	Test temperature (°C)	Impression diameter (mm)	
Supplementary information:				

1.15 (13.3.1)	TABLE: Needle-flame test (IEC 60695-11-5)				N/A
Object/ Part No./ Material	Manufacturer/ trademark	Duration of application of test flame (ta); (s)	Ignition of specified layer Yes/No	Duration of burning (tb) (s)	Verdict
Supplementary information:					

1.15 (13.3.2)	TABLE: Glow-wire test (IEC 60695-2-11)				N/A
Glow wire temperature		650°C		—	
Object/ Part No./ Material	Manufacturer/ trademark	Duration of application of test flame (ta); (s)	Ignition of specified layer Yes/No	Duration of burning (tb) (s)	Verdict
Any flame or glowing of the sample extinguished within 30 s of withdrawing the glow-wire, and any burning or molten drop did not ignite the underlying parts (Yes/No).....:					
Supplementary information:					

IEC 60598-2-1			
Clause	Requirement + Test	Result - Remark	Verdict

1.15 (13.4)	TABLE: Proof tracking test (IEC 60112)			N/A
Test voltage PTI		175 V		—
Object/ Part No./ Material	Manufacturer/ trademark	Withstand 50 drops without failure on three places or on three specimens		Verdict
Supplementary information:				

ANNEX 1	TABLE: Critical components information						P
Object / part No.	Code	Manufacturer/ trademark	Type / model	Technical data	Standard	Mark(s) of conformity ¹⁾	
LED driver	B	V-TAC EXPORTS LIMITED	V-TA	Input: 220-240V, 50/60Hz, Output: 20-36V, 1A, 35W	EN 61347-2-13	CE	
Internal wire	B	Various	1015	18AWG, 105°C 300/500V	--	UL	
LED PCB	B	Various	Various	ASA/PC material, V-2, HWI 0, HAI 0, RTI 90, Min. thickness 2mm.	--	UL	
Supplementary information:							
¹⁾ Provided evidence ensures the agreed level of compliance. See OD-CB2039. The codes above have the following meaning: A - The component is replaceable with another one, also certified, with equivalent characteristics B - The component is replaceable if authorised by the test house C - Integrated component tested together with the appliance D - Alternative component							

ANNEX 2	TABLE: Temperature measurements, thermal tests of Section 12			P
	Type reference	:	VT-4537	—
	Lamp used	:	As normal use	—
	Lamp control gear used	:	Independent contron gear	—
	Mounting position of luminaire	:	As in normal use	—

IEC 60598-2-1

Clause	Requirement + Test	Result - Remark	Verdict
	Supply wattage (W)..... :	37.9W	—
	Supply current (A) :	0.132A	—
	Calculated power factor :	—	—
	Table: measured temperatures corrected for ta = 25 °C:		P
	- abnormal operating mode..... :	—	—
	- test 1: rated voltage :	—	—
	- test 2: 1,06 times rated voltage or 1,05 times rated wattage..... :	Supplied from adapter 1.06x240V=254.4V	—
	- test 3: Load on wiring to socket-outlet, 1,06 times voltage or 1,05 times wattage :	—	—
	- test 4: 1,1 times rated voltage or 1,05 times rated wattage..... :	—	—
	Through wiring or looping-in wiring loaded by a current of A during the test :	—	—

Temperature measurements, (°C)

Part	Ambient	Clause 12.4 – normal				Clause 12.5 – abnormal	
		test 1	test 2	test 3	limit	test 4	limit
Diffuser, outside	25	-	32.3	-	90	-	-
Diffuser, inside	25	-	41.2	-	90	-	-
Internal wire	25	-	34.1	-	105	-	-
LED	25	-	84.1	-	ref	-	-
LED PCB	25	-	70.1	-	130	-	-
Surface of LED driver (Tc)	25	-	61.0	-	80	-	-
Enclosure of LED driver, inside	25	-	66.3	-	80	-	-
Ambient	25	-	-	-	--	-	-

IEC 60598-2-1			
Clause	Requirement + Test	Result - Remark	Verdict

ANNEX 3	Screw terminals (part of the luminaire)		N/A
(14)	SCREW TERMINALS		N/A
(14.2)	Type of terminal		—
	Rated current (A)		—
(14.3.2.1)	One or more conductors		N/A
(14.3.2.2)	Special preparation		N/A
(14.3.2.3)	Terminal size		N/A
	Cross-sectional area (mm ²)		—
(14.3.3)	Conductor space (mm)		N/A
(14.4)	Mechanical tests		N/A
(14.4.1)	Minimum distance		N/A
(14.4.2)	Cannot slip out		N/A
(14.4.3)	Special preparation		N/A
(14.4.4)	Nominal diameter of thread (metric ISO thread).....	M	N/A
	External wiring		N/A
	No soft metal		N/A
(14.4.5)	Corrosion		N/A
(14.4.6)	Nominal diameter of thread (mm)		N/A
	Torque (Nm).....		N/A
(14.4.7)	Between metal surfaces		N/A
	Lug terminal		N/A
	Mantle terminal		N/A
	Pull test; pull (N).....		N/A
(14.4.8)	Without undue damage		N/A

ANNEX 4	Screwless terminals (part of the luminaire)		N/A
(15)	SCREWLESS TERMINALS		N/A
(15.2)	Type of terminal		—
	Rated current (A)		—
(15.3.1)	Material		N/A
(15.3.2)	Clamping		N/A


IEC 60598-2-1			
Clause	Requirement + Test	Result - Remark	Verdict
(15.3.3)	Stop		N/A
(15.3.4)	Unprepared conductors		N/A
(15.3.5)	Pressure on insulating material		N/A
(15.3.6)	Clear connection method		N/A
(15.3.7)	Clamping independently		N/A
(15.3.8)	Fixed in position		N/A
(15.3.10)	Conductor size		N/A
	Type of conductor		N/A
(15.5.1)	Terminals internal wiring		N/A
(15.5.1.1)	Pull test spring-type terminals (4 N, 4 samples) :		N/A
(15.5.1.2)	Pull test pin or tab terminals (4 N, 4 samples) :		N/A
	Insertion force not exceeding 50 N		N/A
(15.5.1.2)	Permanent connections: pull-off test (20 N)		N/A
(15.5.2)	Electrical tests		
	Voltage drop (mV) after 1 h (4 samples)..... :		N/A
	Voltage drop of two inseparable joints		N/A
	Number of cycles:		—
	Voltage drop (mV) after 10th alt. 25th cycle (4 samples) :		N/A
	Voltage drop (mV) after 50th alt. 100th cycle (4 samples) :		N/A
	After ageing, voltage drop (mV) after 10th alt. 25th cycle (4 samples)..... :		N/A
	After ageing, voltage drop (mV) after 50th alt. 100th cycle (4 samples) :		N/A
(15.6)	Terminals external wiring		N/A
	Terminal size and rating		N/A
(15.6.2.1)	Pull test spring-type terminals or welded connections (4 samples); pull (N) :		N/A
	Pull test pin or tab terminals (4 samples); pull (N) :		N/A

IEC 60598-2-1			
Clause	Requirement + Test	Result - Remark	Verdict

(15.6.3.1)	TABLE: Contact resistance test										N/A
	Voltage drop (mV) after 1 h										—
terminal	1	2	3	4	5	6	7	8	9	10	
voltage drop (mV)											
	Voltage drop of two inseparable joints										
	Voltage drop after 10th alt. 25th cycle										
	Max. allowed voltage drop (mV).....:										—
terminal	1	2	3	4	5	6	7	8	9	10	
voltage drop (mV)											
	Voltage drop after 50th alt. 100th cycle										
	Max. allowed voltage drop (mV).....:										—
terminal	1	2	3	4	5	6	7	8	9	10	
voltage drop (mV)											
	Continued ageing: voltage drop after 10th alt. 25th cycle										
	Max. allowed voltage drop (mV).....:										—
terminal	1	2	3	4	5	6	7	8	9	10	
voltage drop (mV)											
	Continued ageing: voltage drop after 50th alt. 100th cycle										
	Max. allowed voltage drop (mV).....:										—
terminal	1	2	3	4	5	6	7	8	9	10	
voltage drop (mV)											
Supplementary information:											

Appendix 1

Photo documentation

<p>Photo 1</p> <p>View:</p> <p><input checked="" type="checkbox"/> Front</p> <p><input type="checkbox"/> Rear</p> <p><input type="checkbox"/> Right side</p> <p><input type="checkbox"/> Left side</p> <p><input type="checkbox"/> Top</p> <p><input type="checkbox"/> Bottom</p> <p><input type="checkbox"/> Internal</p>	
--	---

<p>Photo 2</p> <p>View:</p> <p><input checked="" type="checkbox"/> Front</p> <p><input type="checkbox"/> Rear</p> <p><input type="checkbox"/> Right side</p> <p><input type="checkbox"/> Left side</p> <p><input type="checkbox"/> Top</p> <p><input type="checkbox"/> Bottom</p> <p><input type="checkbox"/> Internal</p>	
--	--

Photo 3

View:

- Front
- Rear
- Right side
- Left side
- Top
- Bottom
- Internal

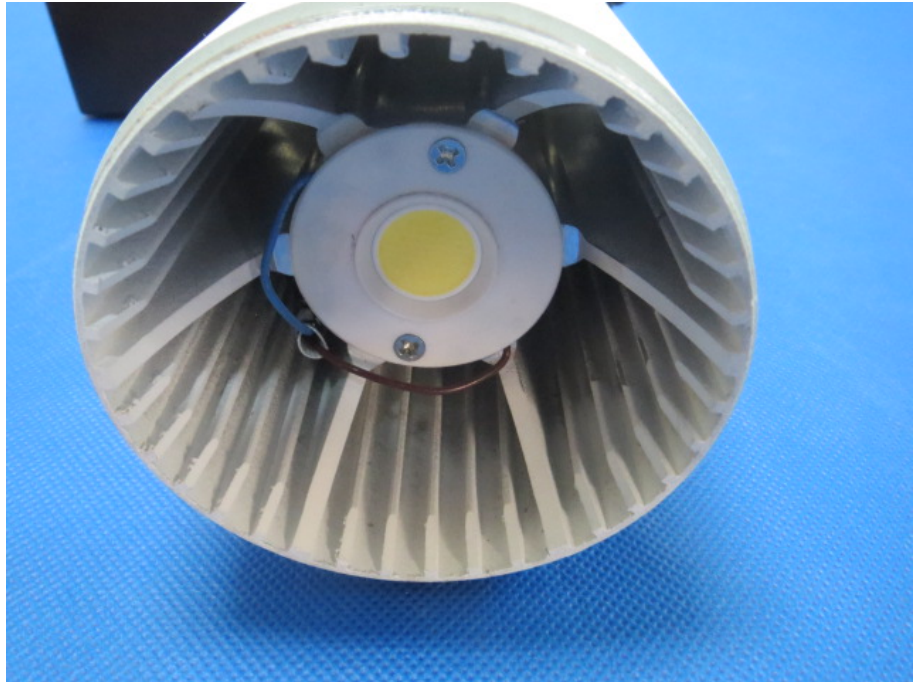


Photo 4

View:

- Front
- Rear
- Right side
- Left side
- Top
- Bottom
- Internal

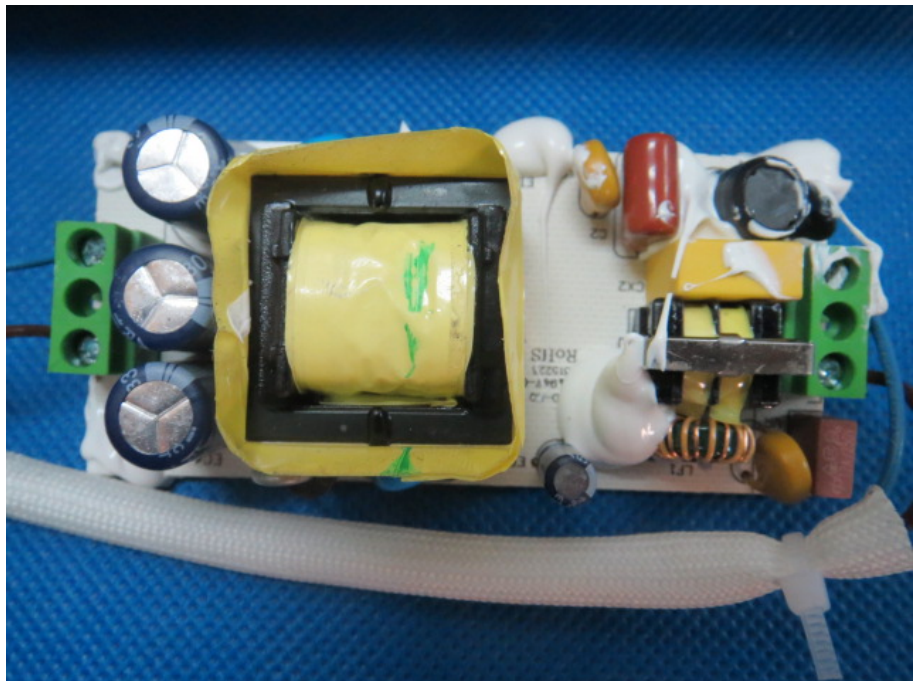
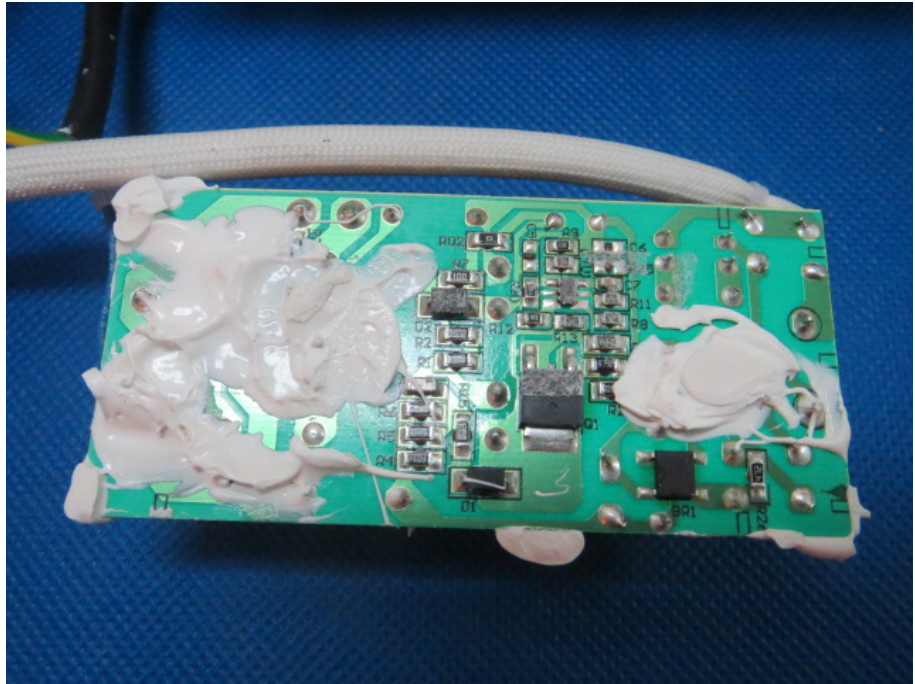


Photo 5

View:

- Front
- Rear
- Right side
- Left side
- Top
- Bottom
- Internal



---END---