

**V-TAC<sup>®</sup>**  
**INNOVATIVE LED LIGHTING**



**SOLAR PANELS**

V-TAC proudly introduces Solar Panels to its broad catalogue of innovations to improve energy efficiency in residential, commercial, and industrial establishments. Converting sunlight directly into electricity, create a photovoltaic (PV) system with our new monocrystalline solar panels – proven more efficient as they are made of a single silicon crystal, hence the higher efficiency. The electrons that generate a flow of electricity have more room to move, and as a result, monocrystalline solar cells are more efficient than their polycrystalline solar cell counterparts. Our Solar Panels are also engineered for a positive power tolerance, ensuring that they will always produce more power equal to or greater than their rated power. PID Resistance make sure that our solar panels maintain their power efficiency despite high voltages, high temperatures, high humidity, and other potential factors. The excellent performance in the low- light environment is attributed to the solar panels' advanced glass and cell surface textured design.

- Monocrystalline solar panels
- Half-Cell Modules – reduces mechanical stress & resistive losses; optimises efficiency
- PID Resistance – maintains efficiency for a long period of time
- Low Light Performance – works and produces enough power even in low-light conditions; ideal despite cloudy or snowy weather conditions
- Weatherproof junction box included
- Resilience to Weather – Certified to withstand wind loads of up to 2400 Pa and snow loads of up to 5400 Pa. Frames topped with anodic oxidation layer resistant to corrosion
- ISO & IEC Certified

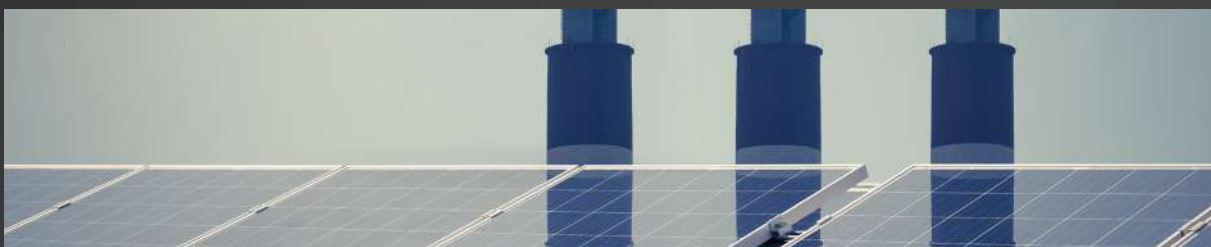
## Residential



## Commercial



## Industrial



## 450W 36V MONO HALF SOLAR PANEL



Model	SKU	Watts
VT-450	11353	450W



**Positive tolerance**  
Positive tolerance of up to 5W delivers higher output reliability.



**High Efficiency**  
Higher module conversion efficiency benefit from half cell structure (low resistance characteristic).



**PID Resistance**  
Excellent Anti-PID performance guarantee limited power degradation for mass production.



**Low-light Performance**  
Advanced glass and cell surface textured design ensure excellent performance in low-light environment.



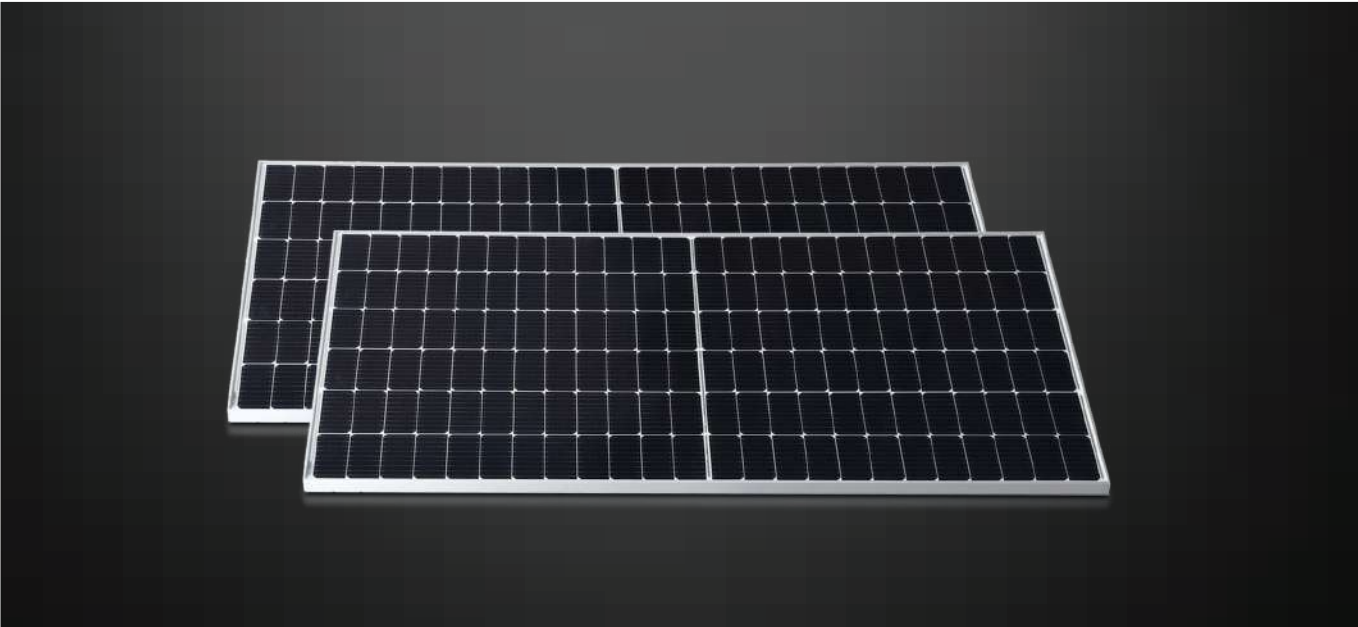
**Severe Weather Resilience**  
Certified to withstand: wind load (2400 Pascal) and snow load (5400 Pascal).



**Durability Against Extreme Environmental Conditions**  
High salt mist and ammonia resistance certified by TUV NORD.

- Rated Maximum Power (Pmax):450W
- Tolerance (Tol):0-+3%
- Voltage at Pmax (Vmp):41.50V
- Current at Pmax (Imp):10.85A
- Open-Circuit Voltage (Voc):49.30V-3%
- Short-Circuit Current (Isc):11.60A+3%
- Nominal Operating Cell Temperature (NOCT):45+2 C
- Maximum System Voltage:1500VDC
- Maximum Series Fuse Rating:20A
- Operating Temperature:- 40Cto+85 C
- Output Cables:4mm<sup>2</sup> cable 55cm(Including MC4 connector)
- Application Class:Class A
- Cell Technology:Mono-si
- Aluminium Alloy & Tempered Glass
- Size:2094×1038×35mm

545W 36V MONO HALF SOLAR PANEL



Model	SKU	Watts
VT-545	11354	545W



**Positive tolerance**  
Positive tolerance of up to 5W delivers higher output reliability.



**High Efficiency**  
Higher module conversion efficiency benefit from half cell structure (low resistance characteristic).



**PID Resistance**  
Excellent Anti-PID performance guarantee limited power degradation for mass production.



**Low-light Performance**  
Advanced glass and cell surface textured design ensure excellent performance in low-light environment.



**Severe Weather Resilience**  
Certified to withstand: wind load (2400 Pascal) and snow load (5400 Pascal).



**Durability Against Extreme Environmental Conditions**  
High salt mist and ammonia resistance certified by TUV NORD.

- Rated Maximum Power (Pmax):545W
- Tolerance (Tol):0~+3%
- Voltage at Pmax (Vmp):41.93V
- Current at Pmax (Imp):13A
- Open-Circuit Voltage (Voc):49.90±3%
- Short-Circuit Current (Isc):13.92±3%
- Nominal Operating Cell Temperature (NOCT):45±2 C
- Maximum System Voltage:1500VDC
- Maximum Series Fuse Rating:25A
- Operating Temperature:- 40Cto+85 C
- Output Cables:4mm<sup>2</sup> cable 55cm(Including MC4 connector)
- Application Class:Class A
- Cell Technology:Mono
- Aluminium Alloy & Tempered Glass
- Size:2279×1134×35mm

COMING  
SOON

V-TAC<sup>®</sup>



SOLAR ENERGY



Warranty

# SOLAR INVERTERS



Lead-acid/  
Lithium  
Battery



Battery Reverse  
Protection



IP65



Smart Energy  
Management



Zero Export  
Function  
(integrated)



Natural Cooling,  
Low noise



Charge/discharge  
Protection





- Max. Current per MPPT: 16A Max
  - Max. Input Power: 6.3kW Max
  - Max. Input Voltage: 600V
  - Min. Operating Voltage: 120V/100V
- Max. Output Current: 26A Max
  - IP Rating: IP65
  - Dimension: 360×462×150mm

Model	SKU	Watts	warranty
<u>VT-6603105</u>	11369	3KW	5 Years
<u>VT-6605105</u>	11370	5KW	5 Years



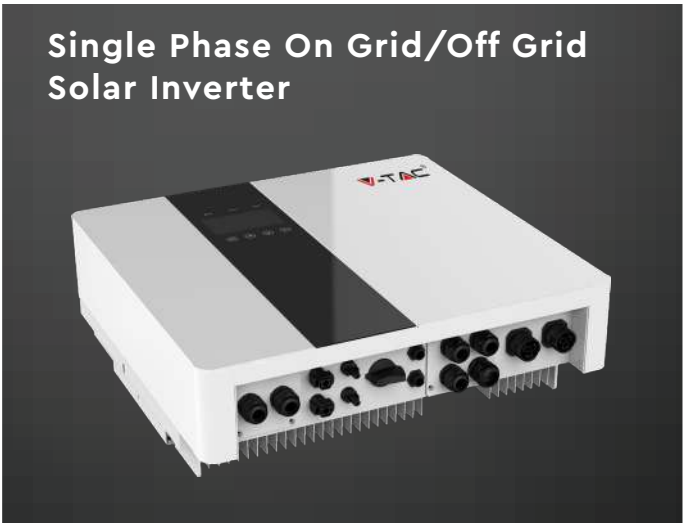
- Max. Current per MPPT: 12.5A Max
  - Max. Input Power: 11kW Max
  - Max. Input Voltage: 1000V Max
  - Min. Operating Voltage: 220V/180V Max
- Max. Output Current: 16A Max
  - IP Rating: IP65
  - Dimension: 360×575×150mm

Model	SKU	Watts	warranty
<u>VT-6605305</u>	11371	5KW	5 Years
<u>VT-6608305</u>	11372	8KW	5 Years
<u>VT-6610305</u>	11373	10KW	5 Years



- Max. Current per MPPT: 16A Max
  - Max. Input Power: 6.3kW Max
  - Max. Input Voltage: 600V
  - Min. Operating Voltage: 120V/100V
- Max. Output Current: 26A Max
  - IP Rating: IP65
  - Dimension: 360×462×150mm

Model	SKU	Watts	warranty
<u>VT-6603110</u>	11379	3KW	10 Years
<u>VT-6605110</u>	11380	5KW	10 Years



- Max. PV Input Power: 7kW Max
  - Max. PV Input Voltage: 550V
  - Max. PV Input Current: 12A
  - Max. Output Current: 26A Max
- Battery Type: Lithium/Lead-acid 40V-58V
  - Charge/Discharge Current: 95 A/ 110A Max
  - IP Rating: IP65
  - Dimension: 550×515×200mm

Model	SKU	Watts	warranty
<u>VT-66036103</u>	11374	3.6KW	3 Years

### Three Phase On Grid/Off Grid Solar Inverter



- Max. Output Current: 19.1A Max
  - Max. PV Input Power: 15.6kW Max
  - Max. PV Input Voltage: 1000V
  - Max. Current per MPPT: 12.5A
- Battery Type: Lithium/Lead-acid 125V-600V
  - Charge/Discharge Current: 50A
  - IP Rating: IP65
  - Dimension: 530×560×200mm

Model	SKU	Watts	warranty
<u>VT-6608303</u>	<b>11375</b>	8KW	<b>3 Years</b>

### On-Grid Solar Inverter



- Max. Input Power: 19.2kW Max
  - Max. Input Voltage: 1100V
  - Min. Operating Voltage: 160V
- Max. Current per MPPT: 13A
  - Max. Output Current: 19.1A Max
  - IP Rating: IP66
  - Dimension: 430×380×150mm

Model	SKU	Watts	warranty
<u>VT-6605310</u>	<b>11381</b>	5KW	<b>10 Years</b>
<u>VT-6608310</u>	<b>11382</b>	8KW	<b>10 Years</b>
<u>VT-6610310</u>	<b>11383</b>	10KW	<b>10 Years</b>

### Single Phase On Grid/Off Grid Solar Inverter



- Max. Output Current: 26A Max
  - Max. PV Input Power: 7kW Max
  - Max. PV Input Voltage: 550V
  - Max. PV Input Current: 14A
- Battery Type: Lithium Iron Phosphate 2.4 - 14.4kWh
  - Charge/Discharge Current: 95A/110A
  - IP Rating: IP21
  - Dimension: 580×1800×350mm

Model	SKU	Watts	warranty
<u>VT-6605103</u>	<b>11376</b>	5KW	<b>3 Years</b>

### Battery for Solar Inverter



SKU

**11377**

**Lithium-Ion Battery  
2400**

### Wifi Dongle for Solar Inverter



Model

VT-660000

SKU

**11378**

**Compatible with  
On-Grid**